

Product datasheet for **TA323601**

TGF beta 1 (TGFB1) Rabbit Polyclonal Antibody

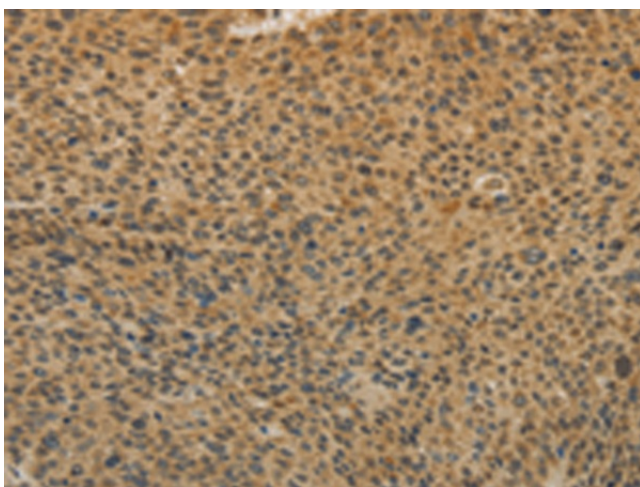
Product data:

Product Type:	Primary Antibodies
Applications:	IHC
Recommended Dilution:	IHC: 25-100 Positive control: Human liver cancer Predicted cell location: Secreted, Cytoplasm
Reactivity:	Human, Mouse, Rat
Host:	Rabbit
Isotype:	IgG
Clonality:	Polyclonal
Immunogen:	Fusion protein corresponding to a region derived from 30-278 amino acids of human transforming growth factor, beta 1
Formulation:	PBS pH7.3, 0.05% NaN ₃ , 50% glycerol
Concentration:	lot specific
Purification:	Antigen affinity purification
Conjugation:	Unconjugated
Storage:	Store at -20°C as received.
Stability:	Stable for 12 months from date of receipt.
Gene Name:	transforming growth factor beta 1
Database Link:	NP_000651 Entrez Gene 21803 Mouse Entrez Gene 59086 Rat Entrez Gene 7040 Human P01137

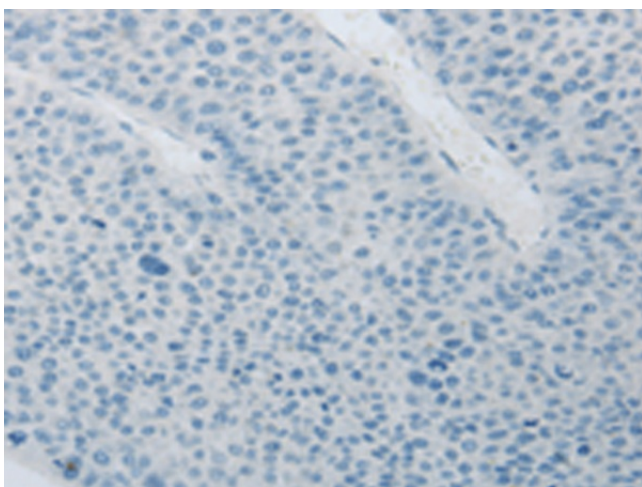


[View online »](#)

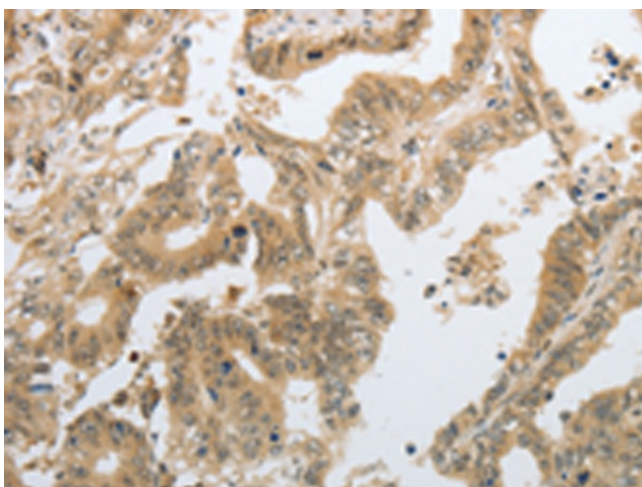
Background:	This gene encodes a member of the transforming growth factor beta (TGFB) family of cytokines; which are multifunctional peptides that regulate proliferation; differentiation; adhesion; migration; and other functions in many cell types. Many cells have TGFB receptors; and the protein positively and negatively regulates many other growth factors. The secreted protein is cleaved into a latency-associated peptide (LAP) and a mature TGFB1 peptide; and is found in either a latent form composed of a TGFB1 homodimer; a LAP homodimer; and a latent TGFB1-binding protein; or in an active form composed of a TGFB1 homodimer. The mature peptide may also form heterodimers with other TGFB family members. This gene is frequently upregulated in tumor cells; and mutations in this gene result in Camurati-Engelmann disease.
Synonyms:	CED; DPD1; LAP; TGFB; TGFBeta
Protein Families:	Druggable Genome, ES Cell Differentiation/IPS, Secreted Protein, Transcription Factors
Protein Pathways:	Cell cycle, Chronic myeloid leukemia, Colorectal cancer, Cytokine-cytokine receptor interaction, Dilated cardiomyopathy, Hypertrophic cardiomyopathy (HCM), MAPK signaling pathway, Pancreatic cancer, Pathways in cancer, Renal cell carcinoma, TGF-beta signaling pathway

Product images:

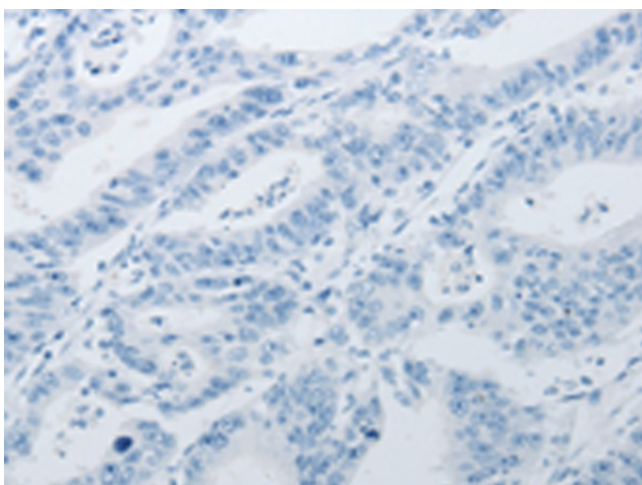
Immunohistochemistry of paraffin-embedded Human liver cancer tissue using TA323601 (TGFB1 Antibody) at dilution 1/20 (Original magnification: ×200)



Immunohistochemistry of paraffin-embedded Human liver cancer tissue using TA323601 (TGFB1 Antibody) at dilution 1/20, treated with fusion protein. (Original magnification: $\times 200$)



Immunohistochemistry of paraffin-embedded Human gastric cancer tissue using TA323601 (TGFB1 Antibody) at dilution 1/20 (Original magnification: $\times 200$)



Immunohistochemistry of paraffin-embedded Human gastric cancer tissue using TA323601 (TGFB1 Antibody) at dilution 1/20, treated with fusion protein. (Original magnification: $\times 200$)