

## Product datasheet for **TA323590S**

### alpha 1a Adrenergic Receptor (ADRA1A) Rabbit Polyclonal Antibody

#### Product data:

Product Type:	Primary Antibodies
Applications:	IHC, WB
Recommended Dilution:	WB: 200-1000 WB positive control: PC3, A549 and K562 cells IHC: 25-100 Positive control: Human thyroid cancer Predicted cell location: Cytoplasm
Reactivity:	Human, Mouse, Rat
Host:	Rabbit
Isotype:	IgG
Clonality:	Polyclonal
Immunogen:	Synthetic peptide corresponding to a region derived from 152-165 amino acids of human adrenoceptor alpha 1A
Formulation:	PBS pH7.3, 0.05% NaN <sub>3</sub> , 50% glycerol
Purification:	Antigen affinity purification
Conjugation:	Unconjugated
Storage:	Store at -20°C as received.
Stability:	Stable for 12 months from date of receipt.
Gene Name:	adrenoceptor alpha 1A
Database Link:	<a href="#">NP_000671</a> <a href="#">Entrez Gene 11549 Mouse</a> <a href="#">Entrez Gene 29412 Rat</a> <a href="#">Entrez Gene 148 Human</a> <a href="#">P35348</a>

**Background:** Alpha-1-adrenergic receptors (alpha-1-ARs) are members of the G protein-coupled receptor superfamily. They activate mitogenic responses and regulate growth and proliferation of many cells. There are 3 alpha-1-AR subtypes: alpha-1A, -1B and -1D, all of which signal through the Gq/11 family of G-proteins and different subtypes show different patterns of activation. This gene encodes alpha-1A-adrenergic receptor. Alternative splicing of this gene generates four transcript variants, which encode four different isoforms with distinct C-termini but having similar ligand binding properties.



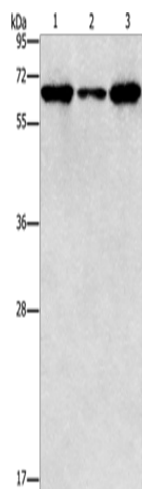
[View online »](#)

**Synonyms:** ADRA1C; ADRA1L1; ALPHA1AAR

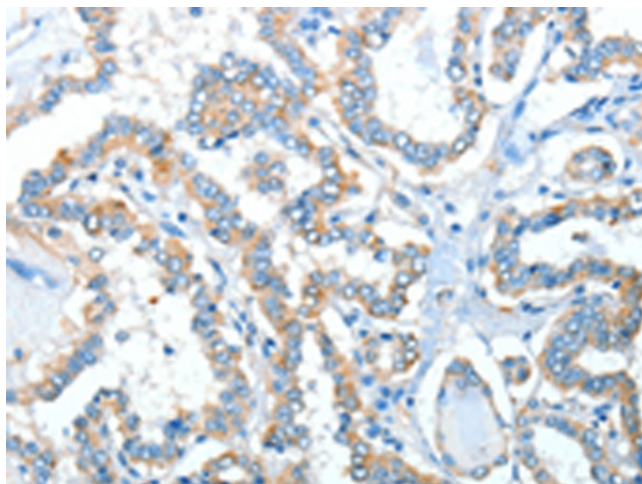
**Protein Families:** Druggable Genome, GPCR, Transmembrane

**Protein Pathways:** Calcium signaling pathway, Neuroactive ligand-receptor interaction, Vascular smooth muscle contraction

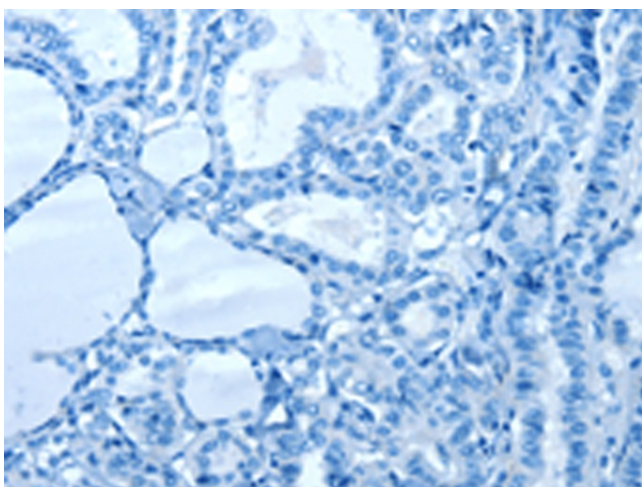
### Product images:



Gel: 10%SDS-PAGE  
Lysate: 40 µg  
Lane 1-3: PC3 cells  
A549 cells  
K562 cells  
Primary antibody: [TA323590] (ADRA1A Antibody) at dilution 1/300  
Secondary antibody: Goat anti rabbit IgG at 1/8000 dilution  
Exposure time: 30 seconds



Immunohistochemistry of paraffin-embedded Human thyroid cancer tissue using [TA323590] (ADRA1A Antibody) at dilution 1/40 (Original magnification: ×200)



Immunohistochemistry of paraffin-embedded Human thyroid cancer tissue using [TA323590] (ADRA1A Antibody) at dilution 1/40, treated with synthetic peptide. (Original magnification: ×200)