

Product datasheet for **TA323589**

alpha 1a Adrenergic Receptor (ADRA1A) Rabbit Polyclonal Antibody

Product data:

| | |
|-----------------------|--|
| Product Type: | Primary Antibodies |
| Applications: | IHC, WB |
| Recommended Dilution: | WB: 200-1000 WB positive control: PC3 and Raji cells IHC: 50-200 Positive control: Human thyroid cancer Predicted cell location: Cytoplasm |
| Reactivity: | Human, Mouse, Rat |
| Host: | Rabbit |
| Isotype: | IgG |
| Clonality: | Polyclonal |
| Immunogen: | Synthetic peptide corresponding to a region derived from 152-165 amino acids of human adrenoceptor alpha 1A |
| Formulation: | PBS pH7.3, 0.05% NaN ₃ , 50% glycerol |
| Concentration: | lot specific |
| Purification: | Antigen affinity purification |
| Conjugation: | Unconjugated |
| Storage: | Store at -20°C as received. |
| Stability: | Stable for 12 months from date of receipt. |
| Gene Name: | adrenoceptor alpha 1A |
| Database Link: | NP_000671 Entrez Gene 11549 Mouse Entrez Gene 29412 Rat Entrez Gene 148 Human P35348 |



[View online »](#)

Background:

Alpha-1-adrenergic receptors (alpha-1-ARs) are members of the G protein-coupled receptor superfamily. They activate mitogenic responses and regulate growth and proliferation of many cells. There are 3 alpha-1-AR subtypes: alpha-1A, -1B and -1D, all of which signal through the Gq/11 family of G-proteins and different subtypes show different patterns of activation. This gene encodes alpha-1A-adrenergic receptor. Alternative splicing of this gene generates four transcript variants, which encode four different isoforms with distinct C-termini but having similar ligand binding properties.

Synonyms:

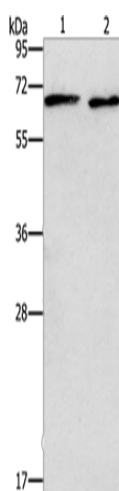
ADRA1C; ADRA1L1; ALPHA1AAR

Protein Families:

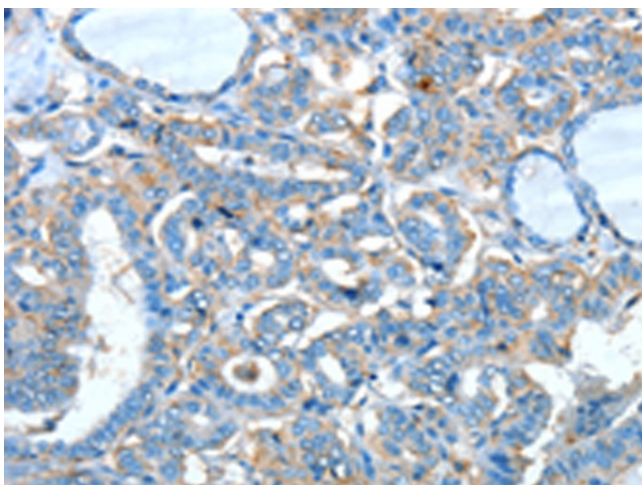
Druggable Genome, GPCR, Transmembrane

Protein Pathways:

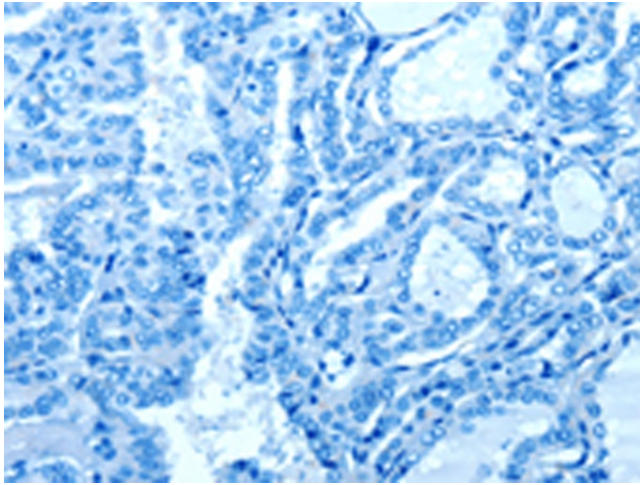
Calcium signaling pathway, Neuroactive ligand-receptor interaction, Vascular smooth muscle contraction

Product images:

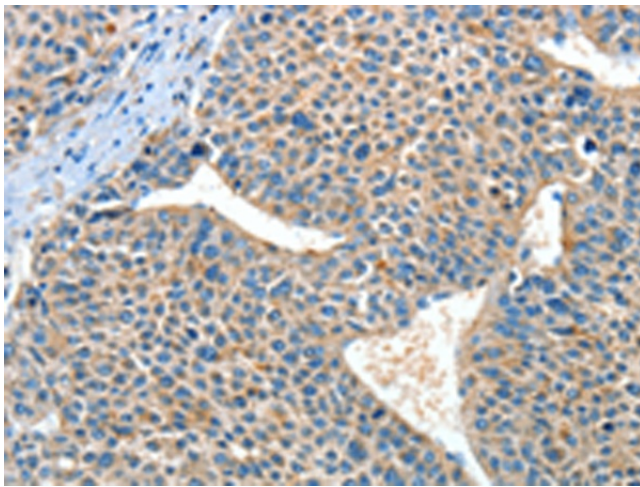
Gel: 10%SDS-PAGE
Lysate: 40 µg
Lane 1-2: PC3 cells
Raji cells
Primary antibody: TA323589 (ADRA1A Antibody)
at dilution 1/337.5
Secondary antibody: Goat anti rabbit IgG at
1/8000 dilution
Exposure time: 10 seconds



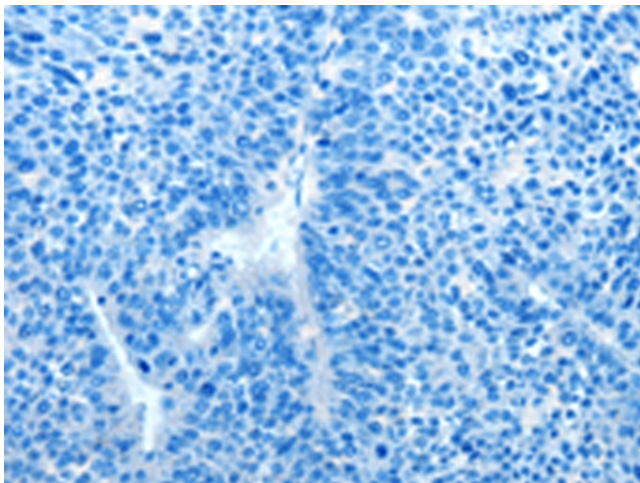
Immunohistochemistry of paraffin-embedded
Human thyroid cancer tissue using TA323589
(ADRA1A Antibody) at dilution 1/60 (Original
magnification: ×200)



Immunohistochemistry of paraffin-embedded Human thyroid cancer tissue using TA323589 (ADRA1A Antibody) at dilution 1/60, treated with synthetic peptide. (Original magnification: $\times 200$)



Immunohistochemistry of paraffin-embedded Human liver cancer tissue using TA323589 (ADRA1A Antibody) at dilution 1/60 (Original magnification: $\times 200$)



Immunohistochemistry of paraffin-embedded Human liver cancer tissue using TA323589 (ADRA1A Antibody) at dilution 1/60, treated with synthetic peptide. (Original magnification: $\times 200$)