

Product datasheet for **TA323588S**

alpha 1b Adrenergic Receptor (ADRA1B) Rabbit Polyclonal Antibody

Product data:

Product Type:	Primary Antibodies
Applications:	IHC, WB
Recommended Dilution:	WB: 500-2000 WB positive control: 293T, PC3 and hela cells IHC: 25-100 Positive control: Human liver cancer Predicted cell location: Cytoplasm
Reactivity:	Human, Mouse, Rat
Host:	Rabbit
Isotype:	IgG
Clonality:	Polyclonal
Immunogen:	Synthetic peptide corresponding to a region derived from 506-520 amino acids of human adrenoceptor alpha 1B
Formulation:	PBS pH7.3, 0.05% NaN ₃ , 50% glycerol
Purification:	Antigen affinity purification
Conjugation:	Unconjugated
Storage:	Store at -20°C as received.
Stability:	Stable for 12 months from date of receipt.
Predicted Protein Size:	57 kDa
Gene Name:	adrenoceptor alpha 1B
Database Link:	NP_000670 Entrez Gene 11548 Mouse Entrez Gene 24173 Rat Entrez Gene 147 Human P35368



[View online »](#)

Background:

Alpha-1-adrenergic receptors (alpha-1-ARs) are members of the G protein-coupled receptor superfamily. They activate mitogenic responses and regulate growth and proliferation of many cells. There are 3 alpha-1-AR subtypes: alpha-1A, -1B and -1D, all of which signal through the Gq/11 family of G-proteins and different subtypes show different patterns of activation. This gene encodes alpha-1B-adrenergic receptor, which induces neoplastic transformation when transfected into NIH 3T3 fibroblasts and other cell lines. Thus, this normal cellular gene is identified as a protooncogene. This gene comprises 2 exons and a single large intron of at least 20 kb that interrupts the coding region.

Synonyms:

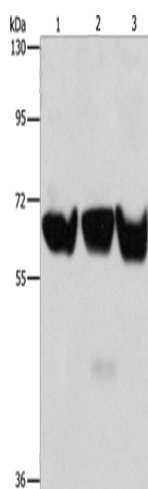
ADRA1; ALPHA1BAR

Protein Families:

Druggable Genome, GPCR, Transmembrane

Protein Pathways:

Calcium signaling pathway, Neuroactive ligand-receptor interaction, Vascular smooth muscle contraction

Product images:

Gel: 8%SDS-PAGE

Lysate: 80 µg

Lane 1-3: 293T cells

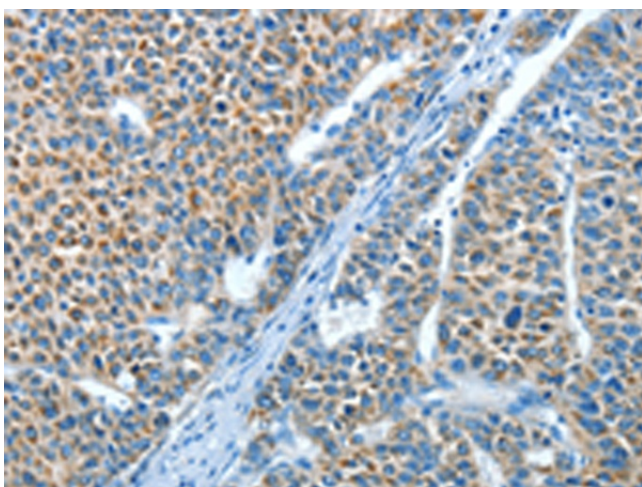
PC3 cells

hela cells

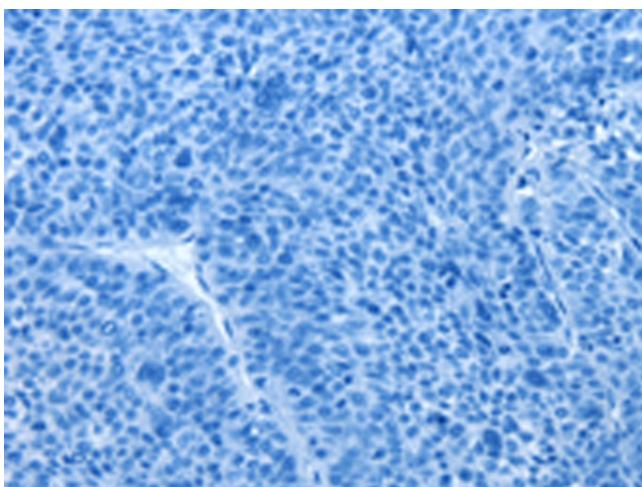
Primary antibody: [TA323588] (ADRA1B Antibody)
at dilution 1/500

Secondary antibody: Goat anti rabbit IgG at
1/8000 dilution

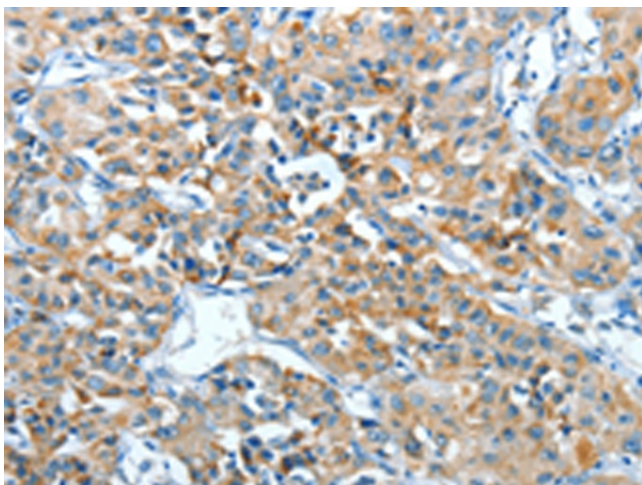
Exposure time: 2 minutes



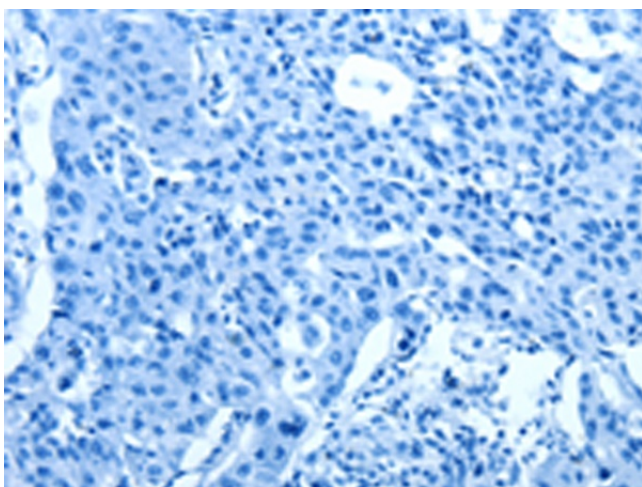
Immunohistochemistry of paraffin-embedded Human liver cancer tissue using [TA323588] (ADRA1B Antibody) at dilution 1/25 (Original magnification: $\times 200$)



Immunohistochemistry of paraffin-embedded Human liver cancer tissue using [TA323588] (ADRA1B Antibody) at dilution 1/25, treated with synthetic peptide. (Original magnification: $\times 200$)



Immunohistochemistry of paraffin-embedded Human lung cancer tissue using [TA323588] (ADRA1B Antibody) at dilution 1/25 (Original magnification: $\times 200$)



Immunohistochemistry of paraffin-embedded Human lung cancer tissue using [TA323588] (ADRA1B Antibody) at dilution 1/25, treated with synthetic peptide. (Original magnification: $\times 200$)