

## Product datasheet for **TA323588**

### alpha 1b Adrenergic Receptor (ADRA1B) Rabbit Polyclonal Antibody

#### Product data:

Product Type:	Primary Antibodies
Applications:	IHC, WB
Recommended Dilution:	WB: 500-2000 WB positive control: 293T, PC3 and hela cells IHC: 25-100 Positive control: Human liver cancer Predicted cell location: Cytoplasm
Reactivity:	Human, Mouse, Rat
Host:	Rabbit
Isotype:	IgG
Clonality:	Polyclonal
Immunogen:	Synthetic peptide corresponding to a region derived from 506-520 amino acids of human adrenoceptor alpha 1B
Formulation:	PBS pH7.3, 0.05% NaN <sub>3</sub> , 50% glycerol
Concentration:	lot specific
Purification:	Antigen affinity purification
Conjugation:	Unconjugated
Storage:	Store at -20°C as received.
Stability:	Stable for 12 months from date of receipt.
Predicted Protein Size:	57 kDa
Gene Name:	adrenoceptor alpha 1B
Database Link:	<a href="#">NP_000670</a> <a href="#">Entrez Gene 11548 Mouse</a> <a href="#">Entrez Gene 24173 Rat</a> <a href="#">Entrez Gene 147 Human P35368</a>



[View online »](#)

**Background:**

Alpha-1-adrenergic receptors (alpha-1-ARs) are members of the G protein-coupled receptor superfamily. They activate mitogenic responses and regulate growth and proliferation of many cells. There are 3 alpha-1-AR subtypes: alpha-1A, -1B and -1D, all of which signal through the Gq/11 family of G-proteins and different subtypes show different patterns of activation. This gene encodes alpha-1B-adrenergic receptor, which induces neoplastic transformation when transfected into NIH 3T3 fibroblasts and other cell lines. Thus, this normal cellular gene is identified as a protooncogene. This gene comprises 2 exons and a single large intron of at least 20 kb that interrupts the coding region.

**Synonyms:**

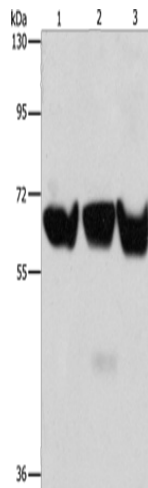
ADRA1; ALPHA1BAR

**Protein Families:**

Druggable Genome, GPCR, Transmembrane

**Protein Pathways:**

Calcium signaling pathway, Neuroactive ligand-receptor interaction, Vascular smooth muscle contraction

**Product images:**

Gel: 8%SDS-PAGE

Lysate: 80 µg

Lane 1-3: 293T cells

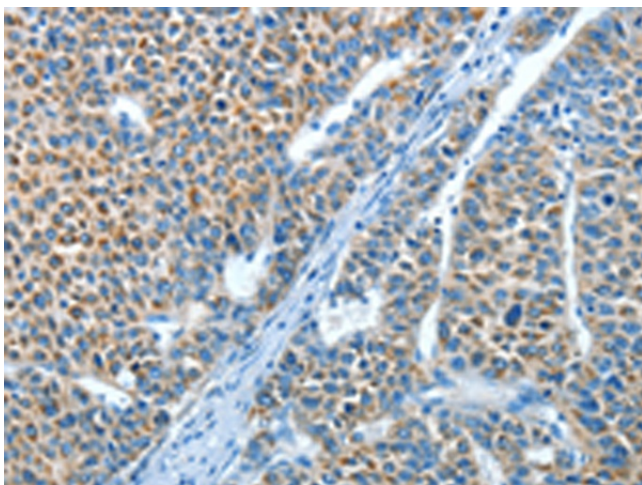
PC3 cells

hela cells

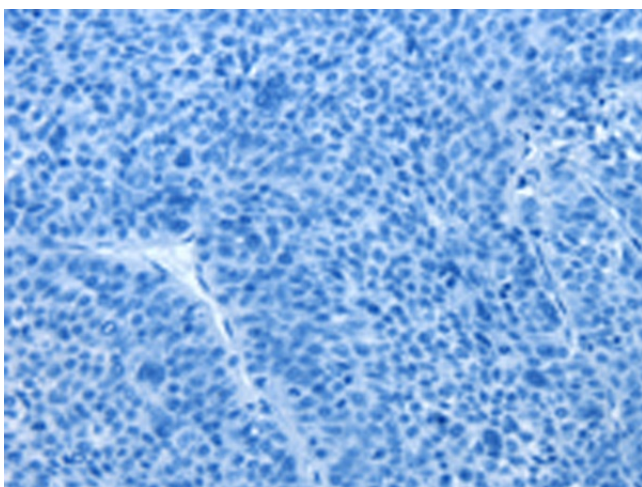
Primary antibody: TA323588 (ADRA1B Antibody)  
at dilution 1/500

Secondary antibody: Goat anti rabbit IgG at  
1/8000 dilution

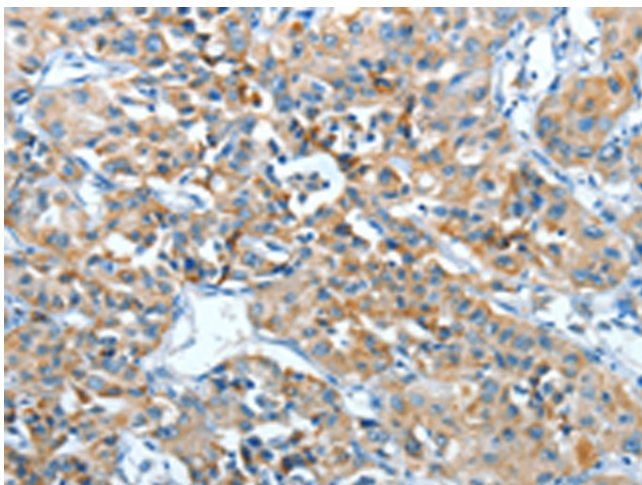
Exposure time: 2 minutes



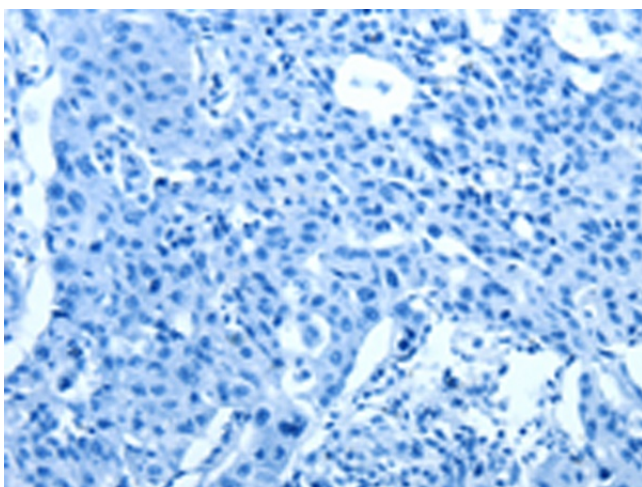
Immunohistochemistry of paraffin-embedded Human liver cancer tissue using TA323588 (ADRA1B Antibody) at dilution 1/25 (Original magnification:  $\times 200$ )



Immunohistochemistry of paraffin-embedded Human liver cancer tissue using TA323588 (ADRA1B Antibody) at dilution 1/25, treated with synthetic peptide. (Original magnification:  $\times 200$ )



Immunohistochemistry of paraffin-embedded Human lung cancer tissue using TA323588 (ADRA1B Antibody) at dilution 1/25 (Original magnification:  $\times 200$ )



Immunohistochemistry of paraffin-embedded Human lung cancer tissue using TA323588 (ADRA1B Antibody) at dilution 1/25, treated with synthetic peptide. (Original magnification: ×200)