

## Product datasheet for **TA323586S**

### alpha 1b Adrenergic Receptor (ADRA1B) Rabbit Polyclonal Antibody

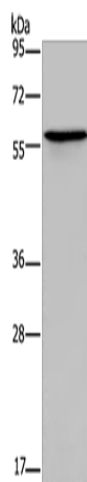
#### Product data:

Product Type:	Primary Antibodies
Applications:	IHC, WB
Recommended Dilution:	WB: 200-1000 WB positive control: Human lung cancer tissue IHC: 25-100 Positive control: Human colon cancer Predicted cell location: Cytoplasm
Reactivity:	Human, Mouse, Rat
Host:	Rabbit
Isotype:	IgG
Clonality:	Polyclonal
Immunogen:	Synthetic peptide corresponding to a region derived from 500-515 amino acids of Human Alpha-1B adrenergic receptor
Formulation:	PBS pH7.3, 0.05% NaN <sub>3</sub> , 50% glycerol
Purification:	Antigen affinity purification
Conjugation:	Unconjugated
Storage:	Store at -20°C as received.
Stability:	Stable for 12 months from date of receipt.
Predicted Protein Size:	57 kDa
Gene Name:	adrenoceptor alpha 1B
Database Link:	<a href="#">NP_000670</a> <a href="#">Entrez Gene 11548 Mouse</a> <a href="#">Entrez Gene 24173 Rat</a> <a href="#">Entrez Gene 147 Human</a> <a href="#">P35368</a>

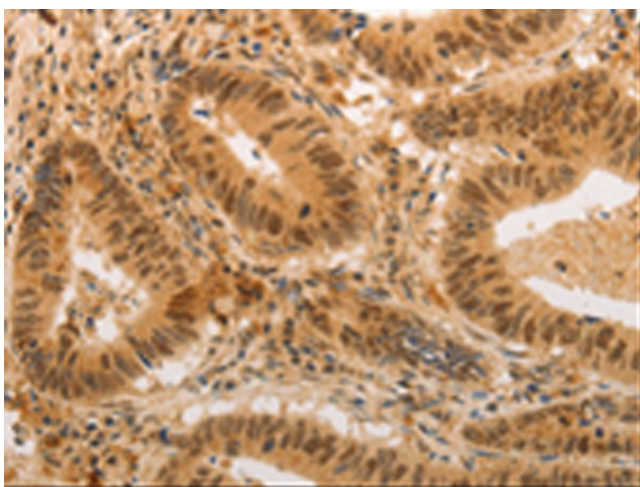


[View online »](#)

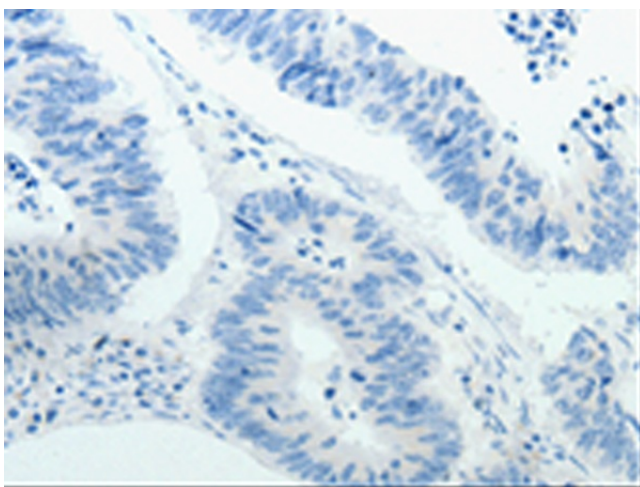
<b>Background:</b>	Alpha-1-adrenergic receptors (alpha-1-ARs) are members of the G protein-coupled receptor superfamily. They activate mitogenic responses and regulate growth and proliferation of many cells. There are 3 alpha-1-AR subtypes: alpha-1A; -1B and -1D; all of which signal through the Gq/11 family of G-proteins and different subtypes show different patterns of activation. This gene encodes alpha-1B-adrenergic receptor; which induces neoplastic transformation when transfected into NIH 3T3 fibroblasts and other cell lines. Thus; this normal cellular gene is identified as a protooncogene. This gene comprises 2 exons and a single large intron of at least 20 kb that interrupts the coding region.
<b>Synonyms:</b>	ADRA1; ALPHA1BAR
<b>Protein Families:</b>	Druggable Genome, GPCR, Transmembrane
<b>Protein Pathways:</b>	Calcium signaling pathway, Neuroactive ligand-receptor interaction, Vascular smooth muscle contraction

**Product images:**

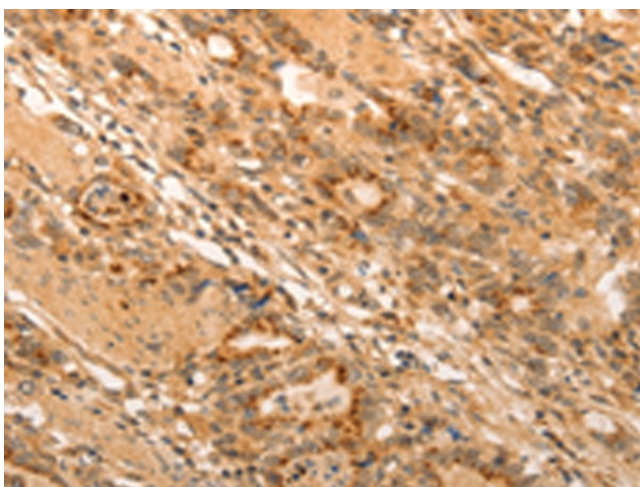
Gel: 10%SDS-PAGE  
Lysate: 40 µg  
Lane: Human lung cancer tissue  
Primary antibody: [TA323586] (ADRA1B Antibody) at dilution 1/550  
Secondary antibody: Goat anti rabbit IgG at 1/8000 dilution  
Exposure time: 1 minute



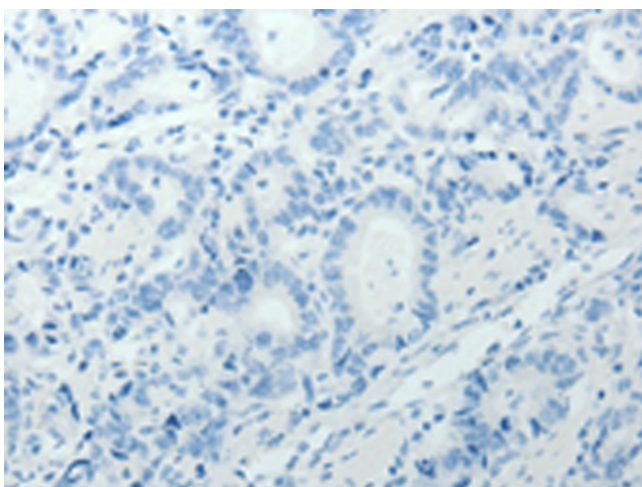
Immunohistochemistry of paraffin-embedded Human colon cancer tissue using [TA323586] (ADRA1B Antibody) at dilution 1/20 (Original magnification:  $\times 200$ )



Immunohistochemistry of paraffin-embedded Human colon cancer tissue using [TA323586] (ADRA1B Antibody) at dilution 1/20, treated with synthetic peptide. (Original magnification:  $\times 200$ )



Immunohistochemistry of paraffin-embedded Human gastric cancer tissue using [TA323586] (ADRA1B Antibody) at dilution 1/20 (Original magnification:  $\times 200$ )



Immunohistochemistry of paraffin-embedded Human gastric cancer tissue using [TA323586] (ADRA1B Antibody) at dilution 1/20, treated with synthetic peptide. (Original magnification: ×200)