

Product datasheet for **TA323583S**

ALDH3B1 Rabbit Polyclonal Antibody

Product data:

Product Type:	Primary Antibodies
Applications:	IHC, WB
Recommended Dilution:	WB: 200-1000 WB positive control: Human normal kidney and liver tissue, human liver cancer tissue IHC: 25-100 Positive control: Human thyroid cancer Predicted cell location: Cytoplasm
Reactivity:	Human, Mouse, Rat
Host:	Rabbit
Isotype:	IgG
Clonality:	Polyclonal
Immunogen:	Fusion protein corresponding to C terminal 300 amino acids of human aldehyde dehydrogenase 3 family, member B1
Formulation:	PBS pH7.3, 0.05% NaN ₃ , 50% glycerol
Purification:	Antigen affinity purification
Conjugation:	Unconjugated
Storage:	Store at -20°C as received.
Stability:	Stable for 12 months from date of receipt.
Predicted Protein Size:	52 kDa
Gene Name:	aldehyde dehydrogenase 3 family member B1
Database Link:	NP_000685 Entrez Gene 67689 MouseEntrez Gene 309147 RatEntrez Gene 221 Human P43353



[View online »](#)

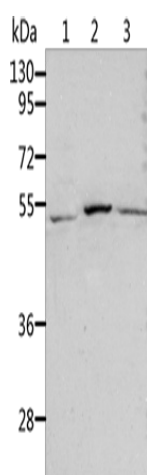
Background: The aldehyde dehydrogenases are a family of isozymes that may play a major role in the detoxification of aldehydes generated by alcohol metabolism and lipid peroxidation. This particular gene spans about 20 kb of genomic DNA and is composed of 9 coding exons. The gene is highly expressed in kidney and lung. The functional significance of this gene as well as the cellular localization of its product are presently unknown. Alternatively spliced transcript variants encoding different isoforms have been found for this gene.

Synonyms: ALDH4; ALDH7

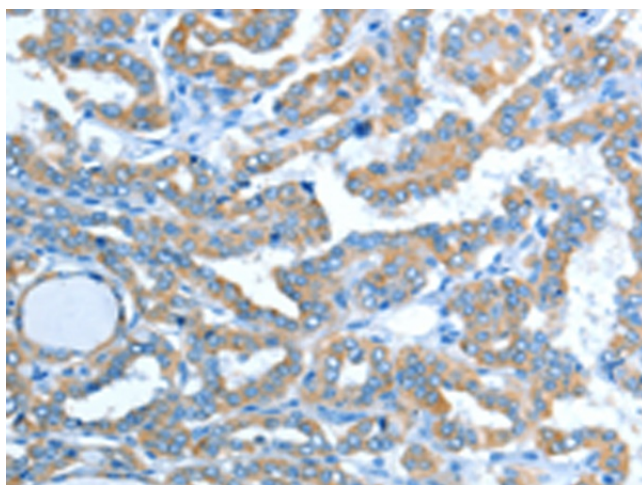
Protein Families: Druggable Genome

Protein Pathways: Drug metabolism - cytochrome P450, Glycolysis / Gluconeogenesis, Histidine metabolism, Metabolic pathways, Metabolism of xenobiotics by cytochrome P450, Phenylalanine metabolism, Tyrosine metabolism

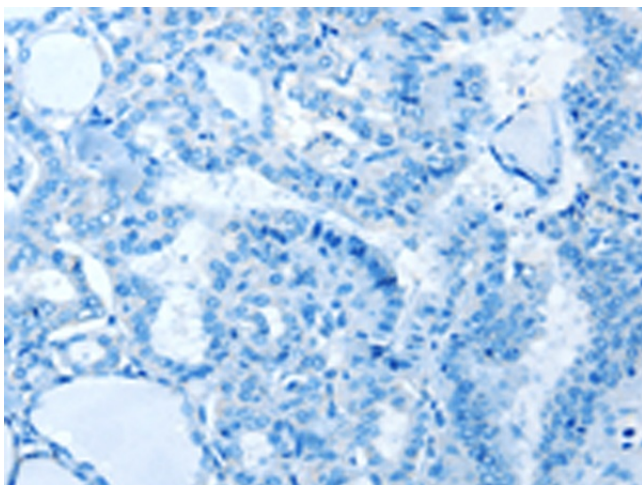
Product images:



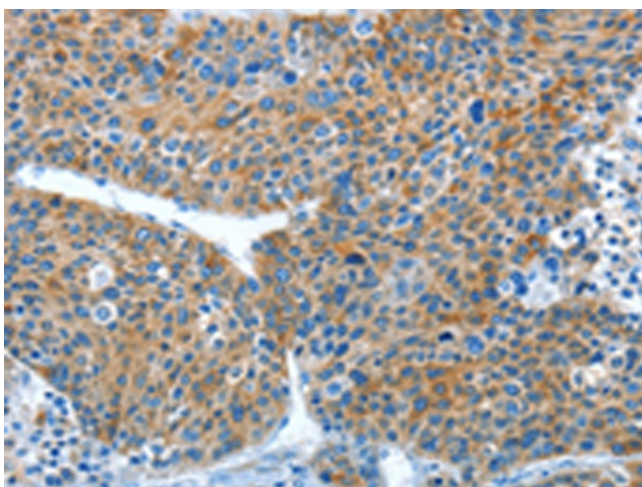
Gel: 10%SDS-PAGE
Lysate: 40 µg
Lane 1-3: Human normal kidney tissue
Human liver tissue
human liver cancer tissue
Primary antibody: [TA323583] (ALDH3B1 Antibody) at dilution 1/200
Secondary antibody: Goat anti rabbit IgG at 1/8000 dilution
Exposure time: 45 seconds



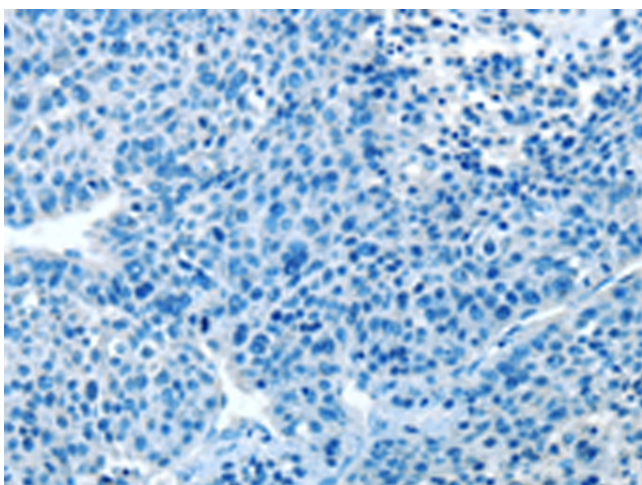
Immunohistochemistry of paraffin-embedded Human thyroid cancer tissue using [TA323583] (ALDH3B1 Antibody) at dilution 1/20 (Original magnification: ×200)



Immunohistochemistry of paraffin-embedded Human thyroid cancer tissue using [TA323583] (ALDH3B1 Antibody) at dilution 1/20, treated with fusion protein. (Original magnification: $\times 200$)



Immunohistochemistry of paraffin-embedded Human liver cancer tissue using [TA323583] (ALDH3B1 Antibody) at dilution 1/20 (Original magnification: $\times 200$)



Immunohistochemistry of paraffin-embedded Human liver cancer tissue using [TA323583] (ALDH3B1 Antibody) at dilution 1/20, treated with fusion protein. (Original magnification: $\times 200$)