

## Product datasheet for **TA323583**

### ALDH3B1 Rabbit Polyclonal Antibody

#### Product data:

Product Type:	Primary Antibodies
Applications:	IHC, WB
Recommended Dilution:	WB: 200-1000 WB positive control: Human normal kidney and liver tissue, human liver cancer tissue IHC: 25-100 Positive control: Human thyroid cancer Predicted cell location: Cytoplasm
Reactivity:	Human, Mouse, Rat
Host:	Rabbit
Isotype:	IgG
Clonality:	Polyclonal
Immunogen:	Fusion protein corresponding to C terminal 300 amino acids of human aldehyde dehydrogenase 3 family, member B1
Formulation:	PBS pH7.3, 0.05% NaN <sub>3</sub> , 50% glycerol
Concentration:	lot specific
Purification:	Antigen affinity purification
Conjugation:	Unconjugated
Storage:	Store at -20°C as received.
Stability:	Stable for 12 months from date of receipt.
Predicted Protein Size:	52 kDa
Gene Name:	aldehyde dehydrogenase 3 family member B1
Database Link:	<a href="#">NP_000685</a> <a href="#">Entrez Gene 67689 Mouse</a> <a href="#">Entrez Gene 309147 Rat</a> <a href="#">Entrez Gene 221 Human</a> <a href="#">P43353</a>



[View online »](#)

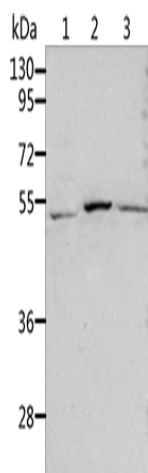
**Background:** The aldehyde dehydrogenases are a family of isozymes that may play a major role in the detoxification of aldehydes generated by alcohol metabolism and lipid peroxidation. This particular gene spans about 20 kb of genomic DNA and is composed of 9 coding exons. The gene is highly expressed in kidney and lung. The functional significance of this gene as well as the cellular localization of its product are presently unknown. Alternatively spliced transcript variants encoding different isoforms have been found for this gene.

**Synonyms:** ALDH4; ALDH7

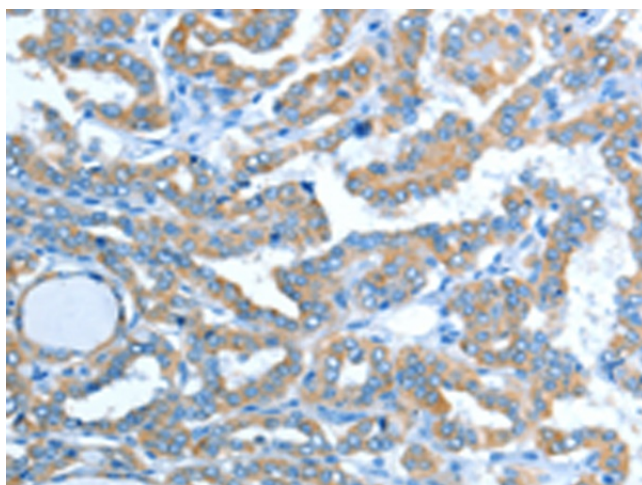
**Protein Families:** Druggable Genome

**Protein Pathways:** Drug metabolism - cytochrome P450, Glycolysis / Gluconeogenesis, Histidine metabolism, Metabolic pathways, Metabolism of xenobiotics by cytochrome P450, Phenylalanine metabolism, Tyrosine metabolism

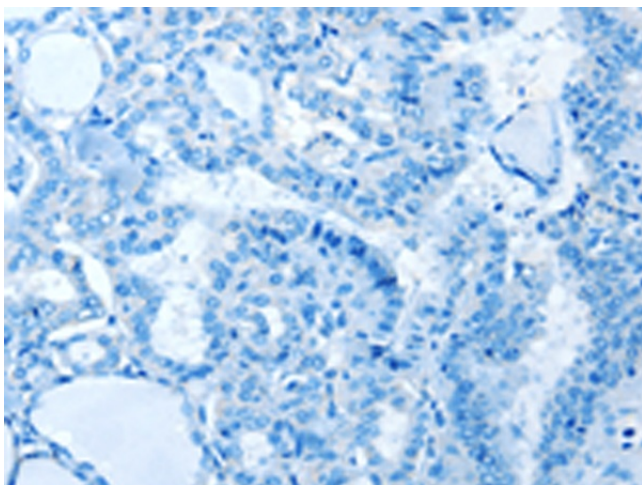
### Product images:



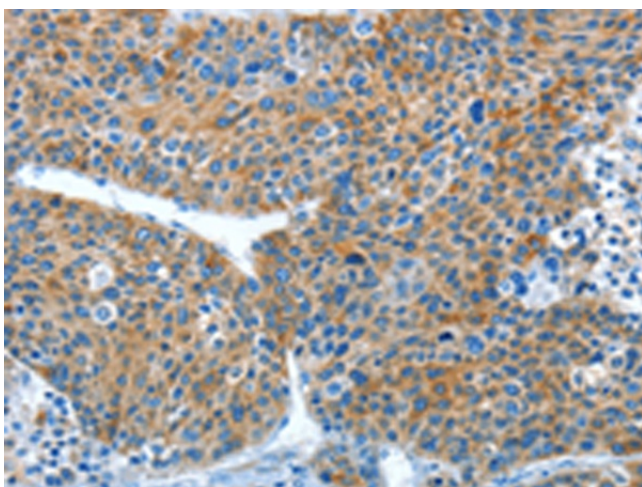
Gel: 10%SDS-PAGE  
Lysate: 40 µg  
Lane 1-3: Human normal kidney tissue  
Human liver tissue  
human liver cancer tissue  
Primary antibody: TA323583 (ALDH3B1 Antibody)  
at dilution 1/200  
Secondary antibody: Goat anti rabbit IgG at  
1/8000 dilution  
Exposure time: 45 seconds



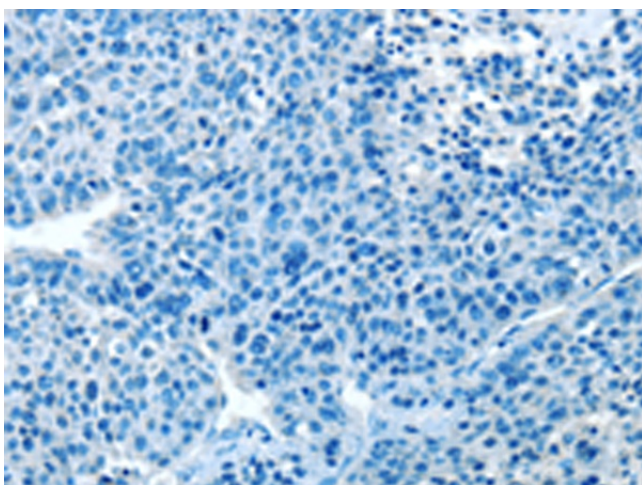
Immunohistochemistry of paraffin-embedded  
Human thyroid cancer tissue using TA323583  
(ALDH3B1 Antibody) at dilution 1/20 (Original  
magnification: ×200)



Immunohistochemistry of paraffin-embedded Human thyroid cancer tissue using TA323583 (ALDH3B1 Antibody) at dilution 1/20, treated with fusion protein. (Original magnification:  $\times 200$ )



Immunohistochemistry of paraffin-embedded Human liver cancer tissue using TA323583 (ALDH3B1 Antibody) at dilution 1/20 (Original magnification:  $\times 200$ )



Immunohistochemistry of paraffin-embedded Human liver cancer tissue using TA323583 (ALDH3B1 Antibody) at dilution 1/20, treated with fusion protein. (Original magnification:  $\times 200$ )