

Product datasheet for **TA323579**

Annexin A1 (ANXA1) Rabbit Polyclonal Antibody

Product data:

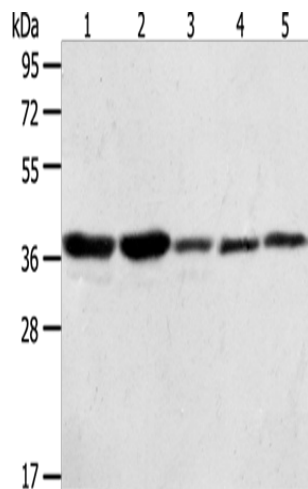
Product Type:	Primary Antibodies
Applications:	WB
Recommended Dilution:	WB: 500-2000 WB positive control: A431, NIH/3T3, HeLa, Jurkat and PC3 cells
Reactivity:	Human, Mouse, Rat
Host:	Rabbit
Isotype:	IgG
Clonality:	Polyclonal
Immunogen:	Full length fusion protein
Formulation:	PBS pH7.3, 0.05% NaN ₃ , 50% glycerol
Concentration:	lot specific
Purification:	Antigen affinity purification
Conjugation:	Unconjugated
Storage:	Store at -20°C as received.
Stability:	Stable for 12 months from date of receipt.
Predicted Protein Size:	39 kDa
Gene Name:	annexin A1
Database Link:	NP_000691 Entrez Gene 16952 MouseEntrez Gene 25380 RatEntrez Gene 301 Human P04083
Background:	Annexin I belongs to a family of Ca ²⁺ -dependent phospholipid binding proteins which have a molecular weight of approximately 35;000 to 40;000 and are preferentially located on the cytosolic face of the plasma membrane. Annexin I protein has an apparent relative molecular mass of 40 kDa; with phospholipase A2 inhibitory activity. Since phospholipase A2 is required for the biosynthesis of the potent mediators of inflammation; prostaglandins and leukotrienes; annexin I may have potential anti-inflammatory activity.
Synonyms:	ANX1; LPC1



[View online »](#)

Protein Families: Druggable Genome

Product images:



Gel: 10%SDS-PAGE
Lysate: 40 μ g
Lane 1-5: A431 cells
NIH/3T3 cells
Hela cells
Jurkat cells
PC3 cells
Primary antibody: TA323579 (ANXA1 Antibody) at dilution 1/400
Secondary antibody: Goat anti rabbit IgG at 1/8000 dilution
Exposure time: 20 seconds