

Product datasheet for **TA323577S**

Glutathione Reductase (GSR) Rabbit Polyclonal Antibody

Product data:

Product Type:	Primary Antibodies
Applications:	IHC, WB
Recommended Dilution:	WB: 1000-5000 WB positive control: Jurkat, HeLa and A549 cells IHC: 50-200 Positive control: Human cervical cancer Predicted cell location: Cytoplasm
Reactivity:	Human, Mouse, Rat
Host:	Rabbit
Isotype:	IgG
Clonality:	Polyclonal
Immunogen:	Fusion protein corresponding to a region derived from 274-475 amino acids of human glutathione reductase
Formulation:	PBS pH7.3, 0.05% NaN ₃ , 50% glycerol
Purification:	Antigen affinity purification
Conjugation:	Unconjugated
Storage:	Store at -20°C as received.
Stability:	Stable for 12 months from date of receipt.
Predicted Protein Size:	56 kDa
Gene Name:	glutathione reductase
Database Link:	NP_000628 Entrez Gene 14782 Mouse Entrez Gene 116686 Rat Entrez Gene 2936 Human P00390



[View online »](#)

Background:

This gene encodes a member of the class-I pyridine nucleotide-disulfide oxidoreductase family. This enzyme is a homodimeric flavoprotein. It is a central enzyme of cellular antioxidant defense; and reduces oxidized glutathione disulfide (GSSG) to the sulfhydryl form GSH; which is an important cellular antioxidant. Rare mutations in this gene result in hereditary glutathione reductase deficiency. Multiple alternatively spliced transcript variants encoding different isoforms have been found.

Synonyms:

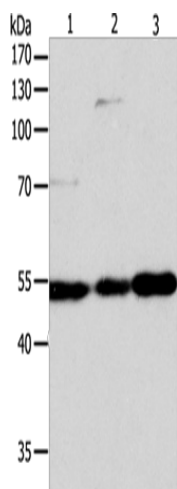
HEL-75

Protein Families:

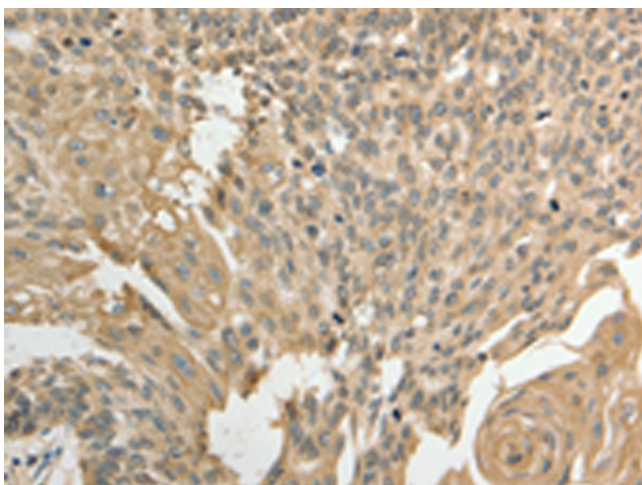
Druggable Genome

Protein Pathways:

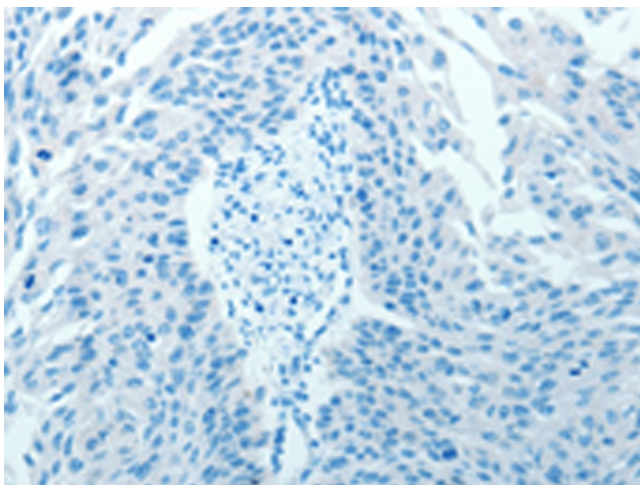
Glutathione metabolism

Product images:


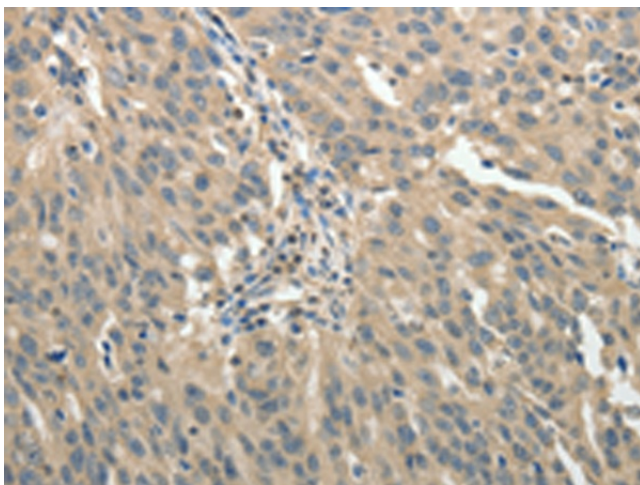
Gel: 10%SDS-PAGE
 Lysate: 40 µg
 Lane 1-3: Jurkat cells
 HeLa cells
 A549 cells
 Primary antibody: [TA323577] (GSR Antibody) at dilution 1/750
 Secondary antibody: Goat anti rabbit IgG at 1/8000 dilution
 Exposure time: 3 seconds



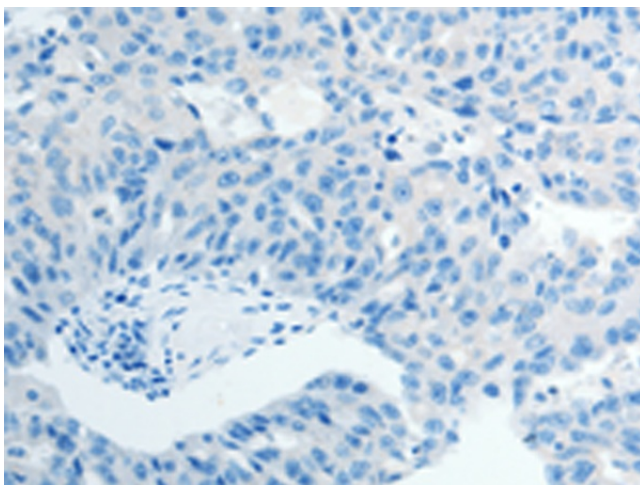
Immunohistochemistry of paraffin-embedded Human cervical cancer tissue using [TA323577] (GSR Antibody) at dilution 1/50 (Original magnification: ×200)



Immunohistochemistry of paraffin-embedded Human cervical cancer tissue using [TA323577] (GSR Antibody) at dilution 1/50, treated with fusion protein. (Original magnification: $\times 200$)



Immunohistochemistry of paraffin-embedded Human ovarian cancer tissue using [TA323577] (GSR Antibody) at dilution 1/50 (Original magnification: $\times 200$)



Immunohistochemistry of paraffin-embedded Human ovarian cancer tissue using [TA323577] (GSR Antibody) at dilution 1/50, treated with fusion protein. (Original magnification: $\times 200$)