

## Product datasheet for **TA323575S**

### Carbonic Anhydrase IV (CA4) Rabbit Polyclonal Antibody

#### Product data:

Product Type:	Primary Antibodies
Applications:	IHC, WB
Recommended Dilution:	WB: 200-1000 WB positive control: Human fetal lung tissue IHC: 25-100 Positive control: Human ovarian cancer Predicted cell location: Cytoplasm
Reactivity:	Human
Host:	Rabbit
Isotype:	IgG
Clonality:	Polyclonal
Immunogen:	Fusion protein corresponding to a region derived from 19-284 amino acids of Human Carbonic anhydrase 4
Formulation:	PBS pH7.3, 0.05% NaN <sub>3</sub> , 50% glycerol
Purification:	Antigen affinity purification
Conjugation:	Unconjugated
Storage:	Store at -20°C as received.
Stability:	Stable for 12 months from date of receipt.
Predicted Protein Size:	35 kDa
Gene Name:	carbonic anhydrase 4
Database Link:	<a href="#">NP_000708</a> <a href="#">Entrez Gene 762 Human</a> <a href="#">P22748</a>



[View online »](#)

**Background:**

Carbonic anhydrases (CAs) are a large family of zinc metalloenzymes that catalyze the reversible hydration of carbon dioxide. They participate in a variety of biological processes; including respiration; calcification; acid-base balance; bone resorption; and the formation of aqueous humor; cerebrospinal fluid; saliva; and gastric acid. They show extensive diversity in tissue distribution and in their subcellular localization. This gene encodes a glycosylphosphatidyl-inositol-anchored membrane isozyme expressed on the luminal surfaces of pulmonary (and certain other) capillaries and proximal renal tubules. Its exact function is not known; however; it may have a role in inherited renal abnormalities of bicarbonate transport.

**Synonyms:**

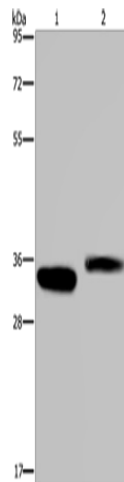
CAIV; Car4; RP17

**Protein Families:**

Druggable Genome, Transmembrane

**Protein Pathways:**

Nitrogen metabolism

**Product images:**

Gel: 10%SDS-PAGE

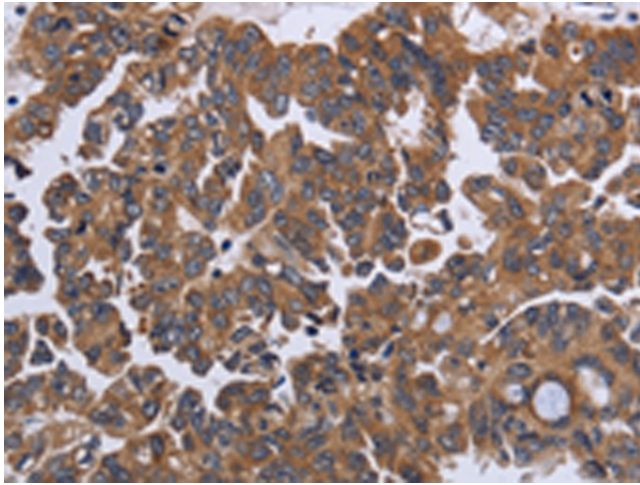
Lysate: 30  $\mu$ g

Lane: Human fetal lung tissue

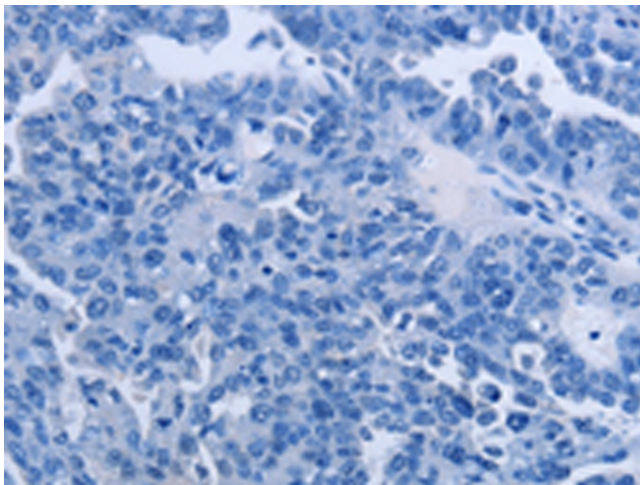
Primary antibody: [TA323575] (CA4 Antibody) at dilution 1/250

Secondary antibody: Goat anti rabbit IgG at 1/8000 dilution

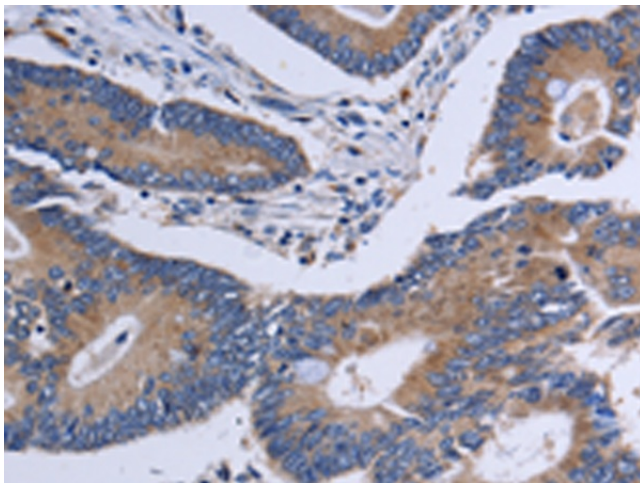
Exposure time: 40 seconds



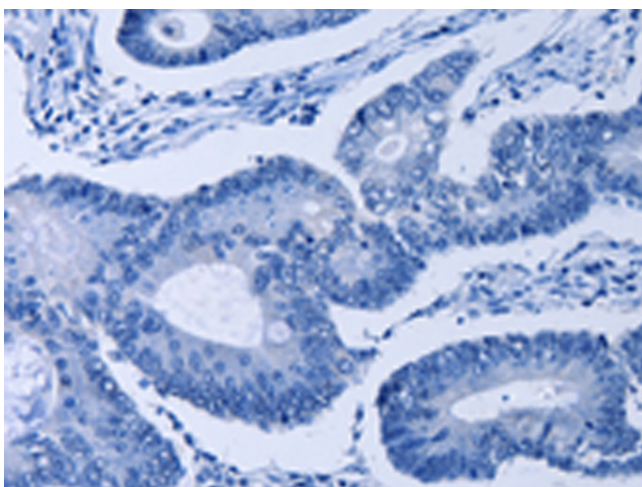
Immunohistochemistry of paraffin-embedded Human ovarian cancer tissue using [TA323575] (CA4 Antibody) at dilution 1/30 (Original magnification: ×200)



Immunohistochemistry of paraffin-embedded Human ovarian cancer tissue using [TA323575] (CA4 Antibody) at dilution 1/30, treated with fusion protein. (Original magnification: ×200)



Immunohistochemistry of paraffin-embedded Human colon cancer tissue using [TA323575] (CA4 Antibody) at dilution 1/30 (Original magnification: ×200)



Immunohistochemistry of paraffin-embedded Human colon cancer tissue using [TA323575] (CA4 Antibody) at dilution 1/30, treated with fusion protein. (Original magnification: ×200)