

## Product datasheet for **TA323571S**

### GCSF Receptor (CSF3R) Rabbit Polyclonal Antibody

#### Product data:

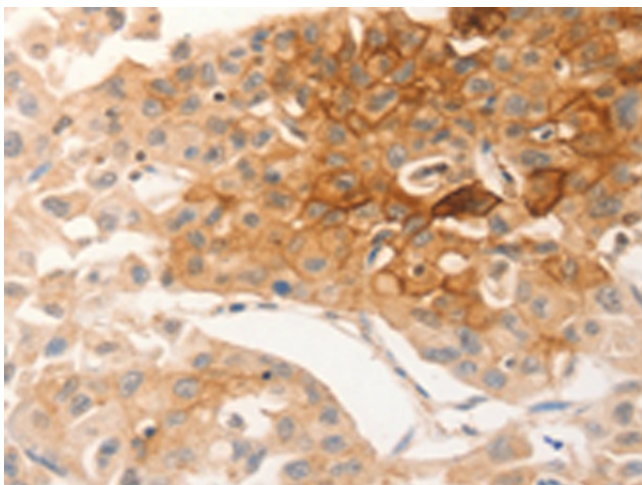
Product Type:	Primary Antibodies
Applications:	IHC
Recommended Dilution:	IHC: 15-50 Positive control: Human lung cancer Predicted cell location: Cytoplasm, Cell membrane
Reactivity:	Human
Host:	Rabbit
Isotype:	IgG
Clonality:	Polyclonal
Immunogen:	Synthetic peptide corresponding to a region derived from 470-484 amino acids of human colony stimulating factor 3 receptor (granulocyte)
Formulation:	PBS pH7.3, 0.05% NaN <sub>3</sub> , 50% glycerol
Purification:	Antigen affinity purification
Conjugation:	Unconjugated
Storage:	Store at -20°C as received.
Stability:	Stable for 12 months from date of receipt.
Gene Name:	colony stimulating factor 3 receptor
Database Link:	<a href="#">NP_000751</a> <a href="#">Entrez Gene 1441 Human</a> <a href="#">Q99062</a>
Background:	The protein encoded by this gene is the receptor for colony stimulating factor 3; a cytokine that controls the production; differentiation; and function of granulocytes. The encoded protein; which is a member of the family of cytokine receptors; may also function in some cell surface adhesion or recognition processes. Alternatively spliced transcript variants have been described. Mutations in this gene are a cause of Kostmann syndrome; also known as severe congenital neutropenia.
Synonyms:	CD114; GCSFR
Protein Families:	Druggable Genome, ES Cell Differentiation/IPS, Secreted Protein, Transmembrane



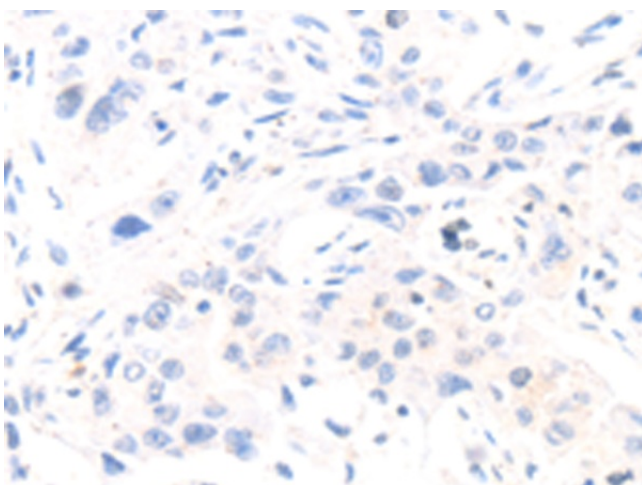
[View online »](#)

**Protein Pathways:** Cytokine-cytokine receptor interaction, Hematopoietic cell lineage, Jak-STAT signaling pathway, Pathways in cancer

**Product images:**



Immunohistochemistry of paraffin-embedded Human lung cancer tissue using [TA323571] (CSF3R Antibody) at dilution 1/12 (Original magnification:  $\times 200$ )



Immunohistochemistry of paraffin-embedded Human lung cancer tissue using [TA323571] (CSF3R Antibody) at dilution 1/12, treated with synthetic peptide. (Original magnification:  $\times 200$ )