

Product datasheet for **TA323569**

CHRM2 Rabbit Polyclonal Antibody

Product data:

Product Type:	Primary Antibodies
Applications:	IHC
Recommended Dilution:	ELISA: 1:1000-2000, IHC: 1:5-25
Reactivity:	Human, Mouse, Rat
Host:	Rabbit
Isotype:	IgG
Clonality:	Polyclonal
Immunogen:	Fusion protein corresponding to a region derived from 208-388 amino acids of human cholinergic receptor, muscarinic 2
Formulation:	PBS pH7.3, 0.05% NaN ₃ , 50% glycerol
Concentration:	lot specific
Purification:	Antigen affinity purification
Conjugation:	Unconjugated
Storage:	Store at -20°C as received.
Stability:	Stable for 12 months from date of receipt.
Gene Name:	cholinergic receptor muscarinic 2
Database Link:	NP_000730 Entrez Gene 81645 Rat Entrez Gene 243764 Mouse Entrez Gene 1129 Human P08172
Background:	The muscarinic cholinergic receptors belong to a larger family of G protein-coupled receptors. The functional diversity of these receptors is defined by the binding of acetylcholine to these receptors and includes cellular responses such as adenylate cyclase inhibition; phosphoinositide degeneration; and potassium channel mediation. Muscarinic receptors influence many effects of acetylcholine in the central and peripheral nervous system. The muscarinic cholinergic receptor 2 is involved in mediation of bradycardia and a decrease in cardiac contractility. Multiple alternatively spliced transcript variants have been described for this gene.
Synonyms:	HM2

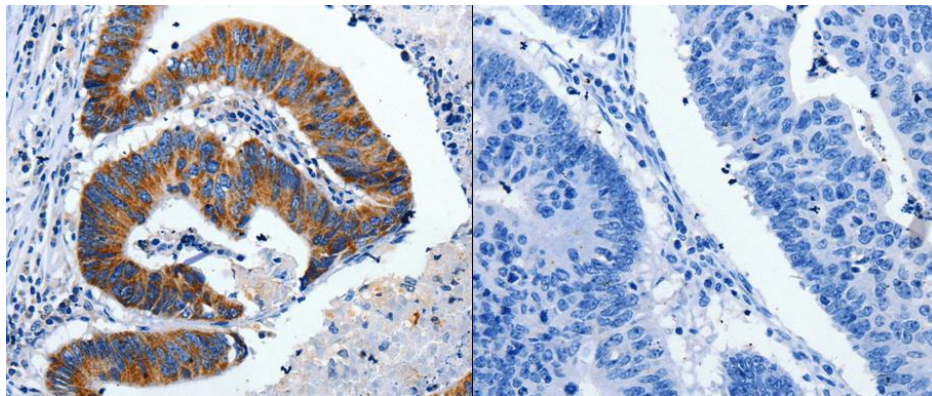


[View online »](#)

Protein Families: Druggable Genome, GPCR, Transmembrane

Protein Pathways: Calcium signaling pathway, Neuroactive ligand-receptor interaction, Regulation of actin cytoskeleton

Product images:



Predicted cell location: Cytoplasm. Positive control: Human colon cancer tissue. Recommended dilution: 1/5-25 The image on the left is immunohistochemistry of paraffin-embedded Human colon cancer tissue using CHRM2 antibody at dilution 1/3, on the right is treated with the fusion protein. (Original magnification: x200)