

Product datasheet for **TA323567**

Angiotensin Converting Enzyme 1 (ACE) Rabbit Polyclonal Antibody

Product data:

Product Type:	Primary Antibodies
Applications:	WB
Recommended Dilution:	WB: 1000-5000 WB positive control: Mouse kidney tissue
Reactivity:	Human, Mouse, Rat
Host:	Rabbit
Isotype:	IgG
Clonality:	Polyclonal
Immunogen:	Synthetic peptide corresponding to a region derived from 78-92 amino acids of Human Angiotensin-converting enzyme
Formulation:	PBS pH7.3, 0.05% NaN ₃ , 50% glycerol
Concentration:	lot specific
Purification:	Antigen affinity purification
Conjugation:	Unconjugated
Storage:	Store at -20°C as received.
Stability:	Stable for 12 months from date of receipt.
Predicted Protein Size:	150 kDa
Gene Name:	angiotensin I converting enzyme
Database Link:	NP_000780 Entrez Gene 11421 Mouse Entrez Gene 24310 Rat Entrez Gene 1636 Human P12821



[View online »](#)

Background:

This gene encodes an enzyme involved in catalyzing the conversion of angiotensin I into a physiologically active peptide angiotensin II. Angiotensin II is a potent vasopressor and aldosterone-stimulating peptide that controls blood pressure and fluid-electrolyte balance. This enzyme plays a key role in the renin-angiotensin system. Many studies have associated the presence or absence of a 287 bp Alu repeat element in this gene with the levels of circulating enzyme or cardiovascular pathophysiology. Multiple alternatively spliced transcript variants encoding different isoforms have been identified; and two most abundant spliced variants encode the somatic form and the testicular form; respectively; that are equally active.

Synonyms:

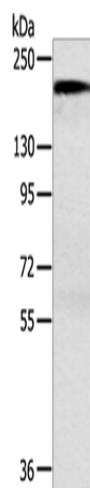
ACE1; CD143; DCP; DCP1

Protein Families:

Druggable Genome, ES Cell Differentiation/IPS, Protease, Secreted Protein, Transmembrane

Protein Pathways:

Hypertrophic cardiomyopathy (HCM), Renin-angiotensin system

Product images:

Gel: 6%SDS-PAGE
Lysate: 40 µg
Lane: Mouse kidney tissue
Primary antibody: TA323567 (ACE Antibody) at dilution 1/1000
Secondary antibody: Goat anti rabbit IgG at 1/8000 dilution
Exposure time: 30 seconds