

## Product datasheet for **TA323563S**

### **GAS 6 (GAS6) Rabbit Polyclonal Antibody**

#### **Product data:**

Product Type:	Primary Antibodies
Applications:	IHC
Recommended Dilution:	IHC: 5-20 Positive control: Human cervical cancer Predicted cell location: Cytoplasm
Reactivity:	Human
Host:	Rabbit
Isotype:	IgG
Clonality:	Polyclonal
Immunogen:	Synthetic peptide corresponding to a region derived from 690-705 amino acids of Human growth arrest-specific 6
Formulation:	PBS pH7.3, 0.05% NaN <sub>3</sub> , 50% glycerol
Purification:	Antigen affinity purification
Conjugation:	Unconjugated
Storage:	Store at -20°C as received.
Stability:	Stable for 12 months from date of receipt.
Gene Name:	growth arrest specific 6
Database Link:	<a href="#">NP_000811</a> <a href="#">Entrez Gene 2621 Human</a> <a href="#">Q14393</a>

**Background:** This gene product is a gamma-carboxyglutamic acid (Gla)-containing protein thought to be involved in the stimulation of cell proliferation; and may play a role in thrombosis. Alternatively spliced transcript variants encoding different isoforms have been found for this gene. Ligand for tyrosine-protein kinase receptors AXL; TYRO3 and MER whose signaling is implicated in cell growth and survival; cell adhesion and cell migration. GAS6/AXL signaling plays a role in various processes such as endothelial cell survival during acidification by preventing apoptosis; optimal cytokine signaling during human natural killer cell development; hepatic regeneration; gonadotropin-releasing hormone neuron survival and migration; platelet activation; or regulation of thrombotic responses.

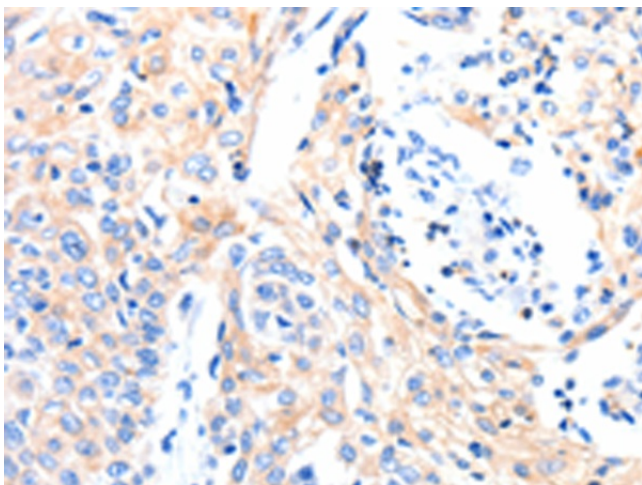


[View online »](#)

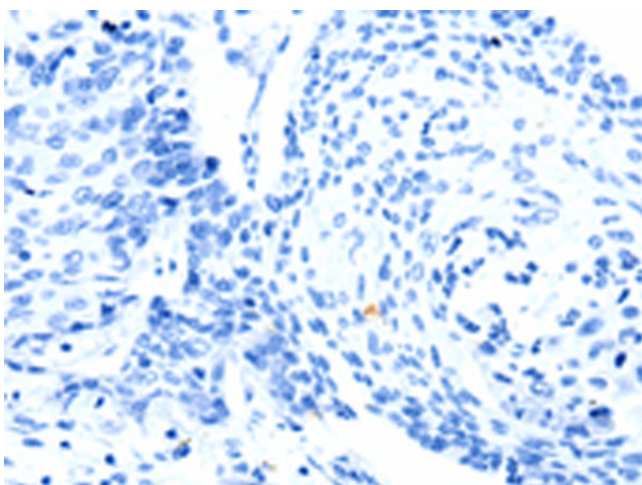
Synonyms: AXLLG; AXSF

Protein Families: Druggable Genome, Secreted Protein

### Product images:



Immunohistochemistry of paraffin-embedded Human cervical cancer tissue using [TA323563] (GAS6 Antibody) at dilution 1/8 (Original magnification:  $\times 200$ )



Immunohistochemistry of paraffin-embedded Human cervical cancer tissue using [TA323563] (GAS6 Antibody) at dilution 1/8, treated with synthetic peptide. (Original magnification:  $\times 200$ )