

Product datasheet for **TA323546**

Glutathione S Transferase theta 1 (GSTT1) Rabbit Polyclonal Antibody

Product data:

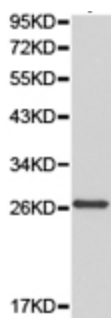
Product Type:	Primary Antibodies
Applications:	WB
Recommended Dilution:	WB: 1:500-2000
Reactivity:	Human, Mouse, Rat
Host:	Rabbit
Isotype:	IgG
Clonality:	Polyclonal
Immunogen:	Full length fusion protein
Formulation:	PBS pH7.3, 0.05% NaN ₃ , 50% glycerol
Concentration:	lot specific
Purification:	Antigen affinity purification
Conjugation:	Unconjugated
Storage:	Store at -20°C as received.
Stability:	Stable for 12 months from date of receipt.
Predicted Protein Size:	27 kDa
Gene Name:	glutathione S-transferase theta 1
Database Link:	NP_000844 Entrez Gene 14871 Mouse Entrez Gene 25260 Rat Entrez Gene 2952 Human P30711
Background:	The GST superfamily is made up of several subfamilies. Glutathione S-transferase P (GSTP1) belongs to the Pi subfamily and is involved in the conjugation of reduced glutathione to a variety of endogenous and exogenous hydrophobic electrophiles. Glutathione S-transferase Mu 1 (GSTM1) is a cytoplasmic liver protein belonging to the Mu family and has the same basic functions as GSTP1-1. Glutathione S-transferase theta 1 (GSTT1), a cytoplasmic homodimer belonging to the Theta family, is expressed in erythrocytes. It is active in the reduced glutathione conjugation and also displays glutathione peroxidase activity with cumene hydroperoxide.
Synonyms:	glutathione S-transferase theta 1



[View online »](#)

Protein Pathways: Drug metabolism - cytochrome P450, Glutathione metabolism, Metabolism of xenobiotics by cytochrome P450

Product images:



Predicted band size: 27 kDa. Positive control: HepG2 cell lysate. Recommended dilution: 1/500-2000. (Gel: 10%SDS-PAGE Lysate: 40 ug Primary antibody: 1/500 dilution Secondary antibody: Goat anti Rabbit IgG - H&L (HRP) at 1/10000 dilution Exposure time: 1 minute)