

Product datasheet for **TA323543**

IL1 Receptor I (IL1R1) Rabbit Polyclonal Antibody

Product data:

Product Type:	Primary Antibodies
Applications:	IHC
Recommended Dilution:	IHC: 25-100 Positive control: Human breast cancer Predicted cell location: Cytoplasm
Reactivity:	Human, Mouse
Host:	Rabbit
Isotype:	IgG
Clonality:	Polyclonal
Immunogen:	Fusion protein corresponding to C terminal 209 amino acids of human interleukin 1 receptor, type I
Formulation:	PBS pH7.3, 0.05% NaN ₃ , 50% glycerol
Concentration:	lot specific
Purification:	Antigen affinity purification
Conjugation:	Unconjugated
Storage:	Store at -20°C as received.
Stability:	Stable for 12 months from date of receipt.
Gene Name:	interleukin 1 receptor type 1
Database Link:	NP_000868 Entrez Gene 16177 Mouse Entrez Gene 3554 Human P14778
Background:	The protein encoded by this gene is a cytokine receptor that belongs to the interleukin 1 receptor family. This protein is a receptor for interleukin alpha (IL1A), interleukin beta (IL1B), and interleukin 1 receptor, type I (IL1R1/IL1RA). It is an important mediator involved in many cytokine induced immune and inflammatory responses. This gene along with interleukin 1 receptor, type II (IL1R2), interleukin 1 receptor-like 2 (IL1RL2), and interleukin 1 receptor-like 1 (IL1RL1) form a cytokine receptor gene cluster in a region mapped to chromosome 2q12.
Synonyms:	CD121A; D2S1473; IL-1R-alpha; IL1R; IL1RA; P80

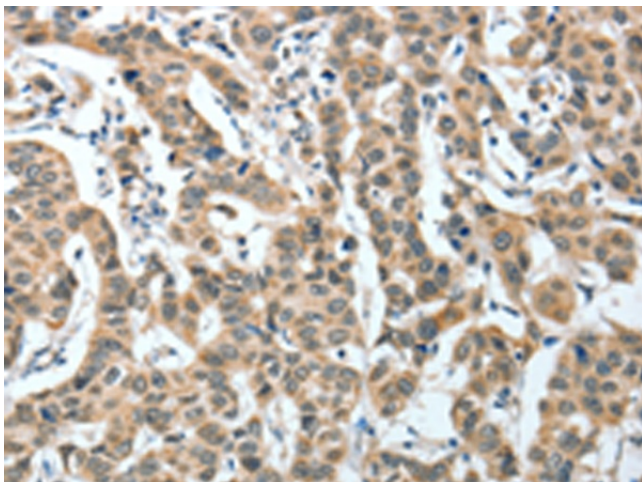


[View online »](#)

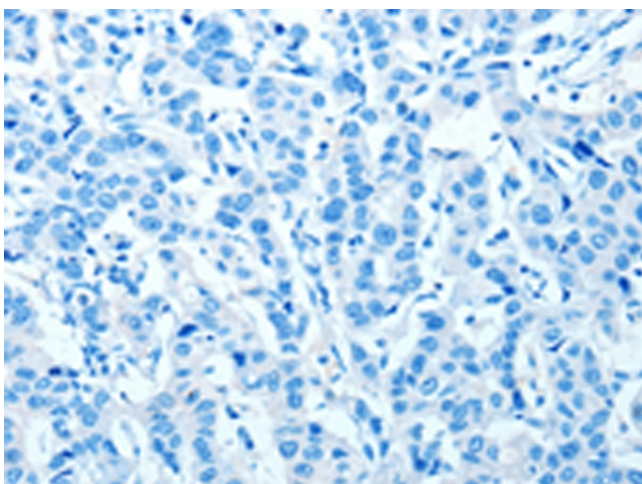
Protein Families: Druggable Genome, Transmembrane

Protein Pathways: Apoptosis, Cytokine-cytokine receptor interaction, Hematopoietic cell lineage, MAPK signaling pathway

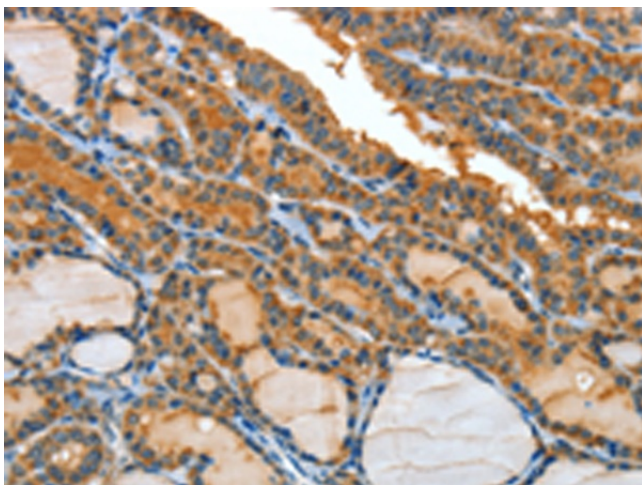
Product images:



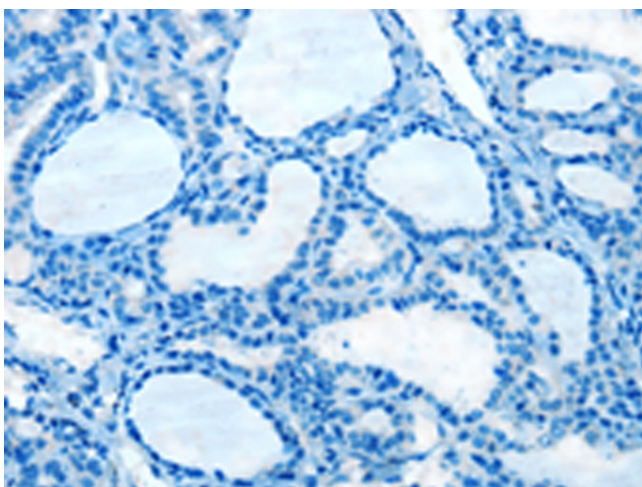
Immunohistochemistry of paraffin-embedded Human breast cancer tissue using TA323543 (IL1R1 Antibody) at dilution 1/25 (Original magnification: x200)



Immunohistochemistry of paraffin-embedded Human breast cancer tissue using TA323543 (IL1R1 Antibody) at dilution 1/25, treated with fusion protein. (Original magnification: x200)



Immunohistochemistry of paraffin-embedded Human thyroid cancer tissue using TA323543 (IL1R1 Antibody) at dilution 1/25 (Original magnification: $\times 200$)



Immunohistochemistry of paraffin-embedded Human thyroid cancer tissue using TA323543 (IL1R1 Antibody) at dilution 1/25, treated with fusion protein. (Original magnification: $\times 200$)