

Product datasheet for **TA323540S**

CD11c (ITGAX) Rabbit Polyclonal Antibody

Product data:

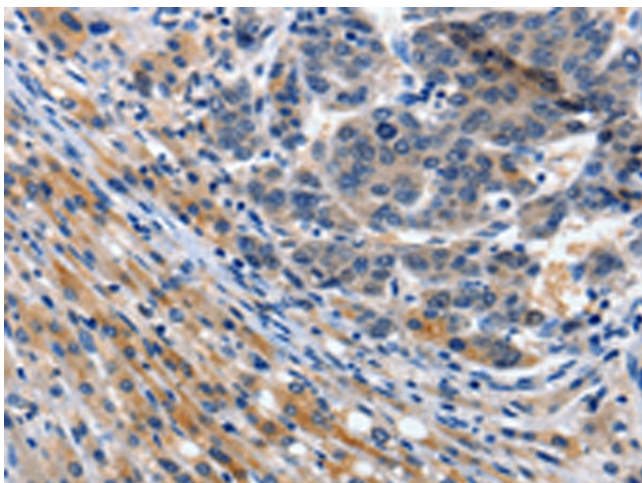
Product Type:	Primary Antibodies
Applications:	IHC
Recommended Dilution:	IHC: 15-50 Positive control: Human liver cancer Predicted cell location: Cytoplasm
Reactivity:	Human
Host:	Rabbit
Isotype:	IgG
Clonality:	Polyclonal
Immunogen:	Synthetic peptide corresponding to a region derived from 1150-1163 amino acids of Human integrin, alpha X (complement component 3 receptor 4 subunit)
Formulation:	PBS pH7.3, 0.05% NaN ₃ , 50% glycerol
Purification:	Antigen affinity purification
Conjugation:	Unconjugated
Storage:	Store at -20°C as received.
Stability:	Stable for 12 months from date of receipt.
Gene Name:	integrin subunit alpha X
Database Link:	NP_000878 Entrez Gene 3687 Human P20702
Background:	This gene encodes the integrin alpha X chain protein. Integrins are heterodimeric integral membrane proteins composed of an alpha chain and a beta chain. This protein combines with the beta 2 chain (ITGB2) to form a leukocyte-specific integrin referred to as inactivated-C3b (iC3b) receptor 4 (CR4). The alpha X beta 2 complex seems to overlap the properties of the alpha M beta 2 integrin in the adherence of neutrophils and monocytes to stimulated endothelium cells; and in the phagocytosis of complement coated particles.
Synonyms:	CD11C; SLEB6
Protein Families:	Druggable Genome, Transmembrane



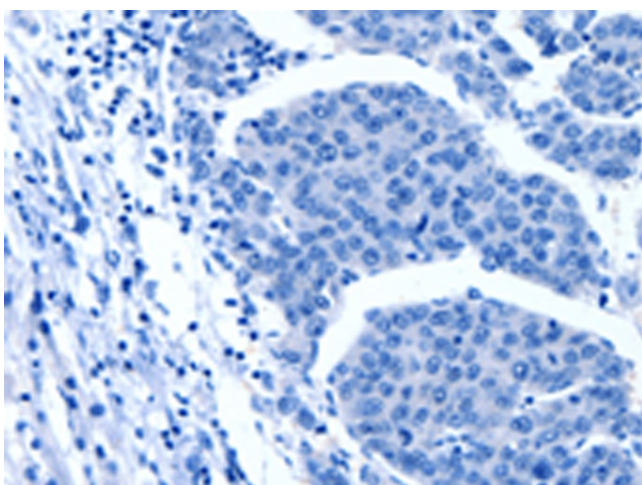
[View online »](#)

Protein Pathways: Regulation of actin cytoskeleton

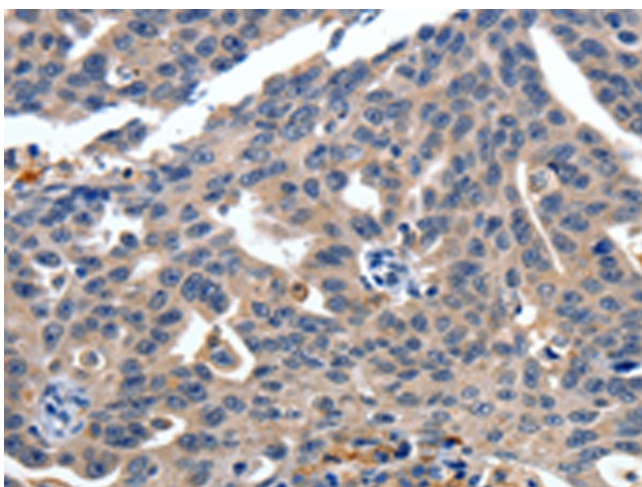
Product images:



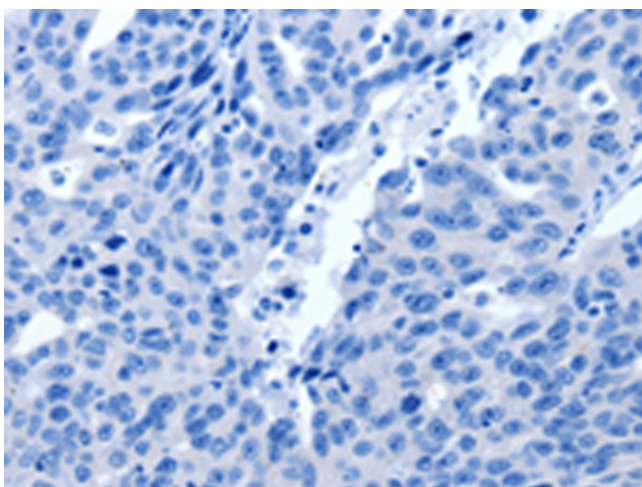
Immunohistochemistry of paraffin-embedded Human liver cancer tissue using [TA323540] (ITGAX Antibody) at dilution 1/15 (Original magnification: $\times 200$)



Immunohistochemistry of paraffin-embedded Human liver cancer tissue using [TA323540] (ITGAX Antibody) at dilution 1/15, treated with synthetic peptide. (Original magnification: $\times 200$)



Immunohistochemistry of paraffin-embedded Human ovarian cancer tissue using [TA323540] (ITGAX Antibody) at dilution 1/15 (Original magnification: $\times 200$)



Immunohistochemistry of paraffin-embedded Human ovarian cancer tissue using [TA323540] (ITGAX Antibody) at dilution 1/15, treated with synthetic peptide. (Original magnification: $\times 200$)