

## Product datasheet for **TA323538**

### Luteinizing Hormone beta (LHB) Rabbit Polyclonal Antibody

#### Product data:

Product Type:	Primary Antibodies
Applications:	IHC, WB
Recommended Dilution:	WB: 200-1000 WB positive control: Mouse adrenal gland tissue IHC: 50-200 Positive control: Human liver cancer Predicted cell location: Secreted
Reactivity:	Human, Mouse
Host:	Rabbit
Isotype:	IgG
Clonality:	Polyclonal
Immunogen:	Synthetic peptide corresponding to a region derived from 114-128 amino acids of Human luteinizing hormone beta polypeptide
Formulation:	PBS pH7.3, 0.05% NaN <sub>3</sub> , 50% glycerol
Concentration:	lot specific
Purification:	Antigen affinity purification
Conjugation:	Unconjugated
Storage:	Store at -20°C as received.
Stability:	Stable for 12 months from date of receipt.
Predicted Protein Size:	15 kDa
Gene Name:	luteinizing hormone beta polypeptide
Database Link:	<a href="#">NP_000885</a> <a href="#">Entrez Gene 16866 Mouse</a> <a href="#">Entrez Gene 3972 Human</a> <a href="#">P01229</a>



[View online »](#)

**Background:**

This gene is a member of the glycoprotein hormone beta chain family and encodes the beta subunit of luteinizing hormone (LH). Glycoprotein hormones are heterodimers consisting of a common alpha subunit and an unique beta subunit which confers biological specificity. LH is expressed in the pituitary gland and promotes spermatogenesis and ovulation by stimulating the testes and ovaries to synthesize steroids. The genes for the beta chains of chorionic gonadotropin and for luteinizing hormone are contiguous on chromosome 19q13.3. Mutations in this gene are associated with hypogonadism which is characterized by infertility and pseudohermaphroditism.?

**Synonyms:**

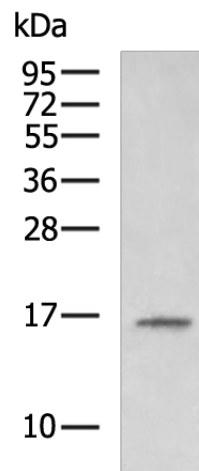
CGB4; HH23; LSH-B; LSH-beta

**Protein Families:**

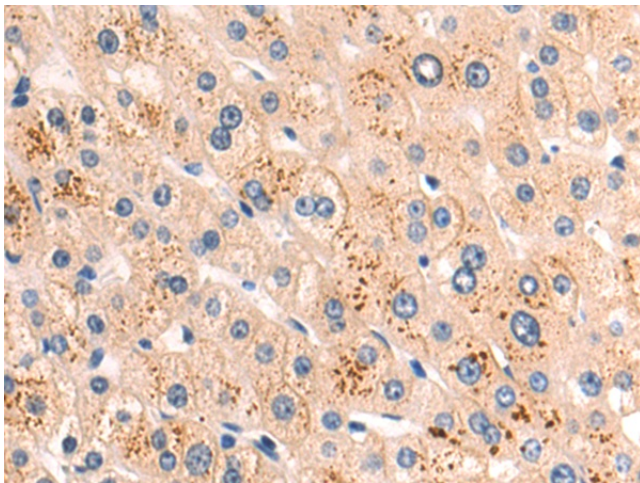
Druggable Genome, Secreted Protein

**Protein Pathways:**

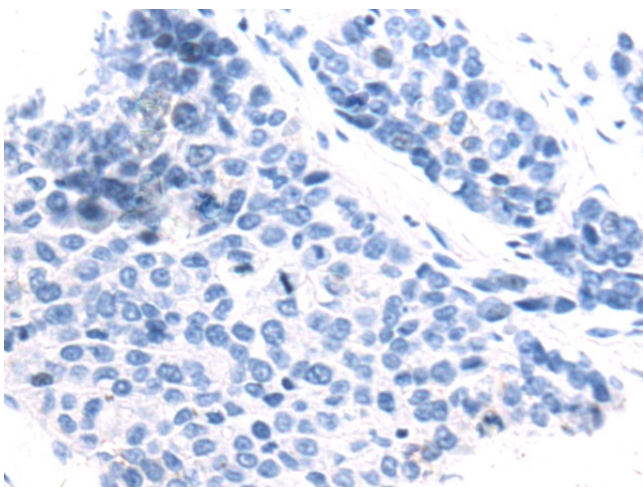
GnRH signaling pathway, Neuroactive ligand-receptor interaction

**Product images:**

Gel: 12%SDS-PAGE  
Lysate: 40 µg  
Lane: Mouse adrenal gland tissue  
Primary antibody: TA323538 (LHB Antibody) at dilution 1/600  
Secondary antibody: Goat anti rabbit IgG at 1/5000 dilution  
Exposure time: 1 minute



Immunohistochemistry of paraffin-embedded Human liver cancer tissue using TA323538 (LHB Antibody) at dilution 1/50 (Original magnification: ×200)



Immunohistochemistry of paraffin-embedded Human liver cancer tissue using TA323538 (LHB Antibody) at dilution 1/50, treated with synthetic peptide. (Original magnification: ×200)