

Product datasheet for **TA323536**

NQO2 Rabbit Polyclonal Antibody

Product data:

Product Type:	Primary Antibodies
Applications:	IHC, WB
Recommended Dilution:	WB: 1000-5000 WB positive control: Mouse liver tissue IHC: 50-200 Positive control: Human breast cancer Predicted cell location: Cytoplasm
Reactivity:	Human, Mouse
Host:	Rabbit
Isotype:	IgG
Clonality:	Polyclonal
Immunogen:	Synthetic peptide corresponding to a region derived from 190-204 amino acids of Human NAD(P)H dehydrogenase, quinone 2
Formulation:	PBS pH7.3, 0.05% NaN ₃ , 50% glycerol
Concentration:	lot specific
Purification:	Antigen affinity purification
Conjugation:	Unconjugated
Storage:	Store at -20°C as received.
Stability:	Stable for 12 months from date of receipt.
Predicted Protein Size:	26 kDa
Gene Name:	NAD(P)H quinone dehydrogenase 2
Database Link:	NP_000895 Entrez Gene 18105 Mouse Entrez Gene 4835 Human P16083



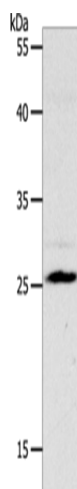
[View online »](#)

Background:

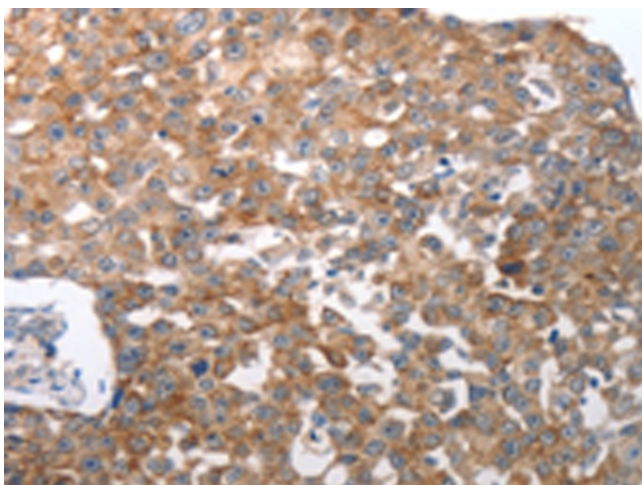
NQO2 (EC 1.10.99.2) is a flavoprotein that catalyzes the 2-electron reduction of various quinones; redox dyes; and the vitamin K menadione. NQO2 predominantly uses dihydronicotinamide riboside (NRH) as the electron donor. The enzyme apparently serves as a quinone reductase in connection with conjugation reactions of hydroquinones involved in detoxification pathways as well as in biosynthetic processes such as the vitamin K-dependent gamma-carboxylation of glutamate residues in prothrombin synthesis.

Synonyms:

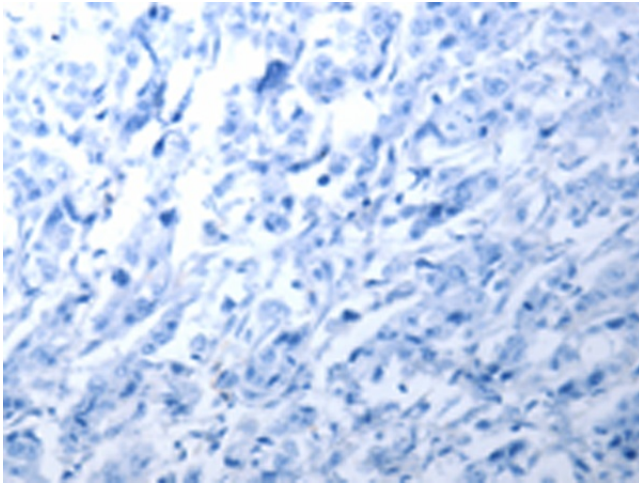
DHQV; DIA6; NMOR2; QR2

Product images:

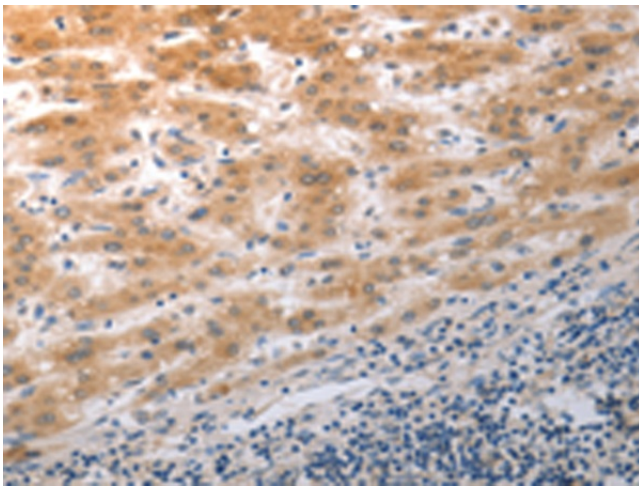
Gel: 10%SDS-PAGE
Lysate: 80 μ g
Lane: Mouse liver tissue
Primary antibody: TA323536 (NQO2 Antibody) at dilution 1/1200
Secondary antibody: Goat anti rabbit IgG at 1/8000 dilution
Exposure time: 45 seconds



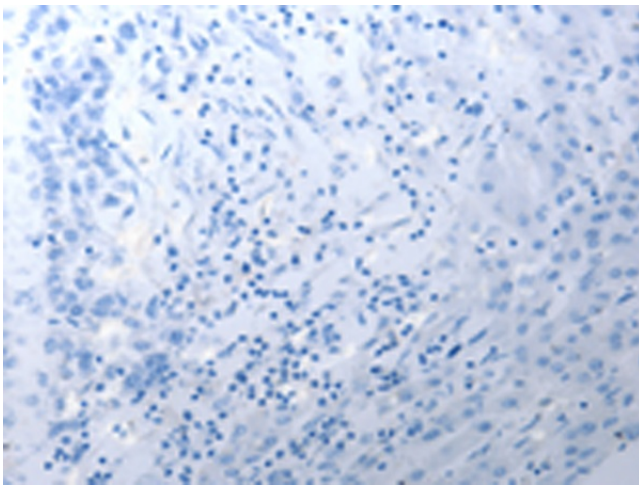
Immunohistochemistry of paraffin-embedded Human breast cancer tissue using TA323536 (NQO2 Antibody) at dilution 1/50 (Original magnification: \times 200)



Immunohistochemistry of paraffin-embedded Human breast cancer tissue using TA323536 (NQO2 Antibody) at dilution 1/50, treated with synthetic peptide. (Original magnification: x200)



Immunohistochemistry of paraffin-embedded Human liver cancer tissue using TA323536 (NQO2 Antibody) at dilution 1/50 (Original magnification: x200)



Immunohistochemistry of paraffin-embedded Human liver cancer tissue using TA323536 (NQO2 Antibody) at dilution 1/50, treated with synthetic peptide. (Original magnification: x200)