

## Product datasheet for **TA323533S**

### NPY2R Rabbit Polyclonal Antibody

#### Product data:

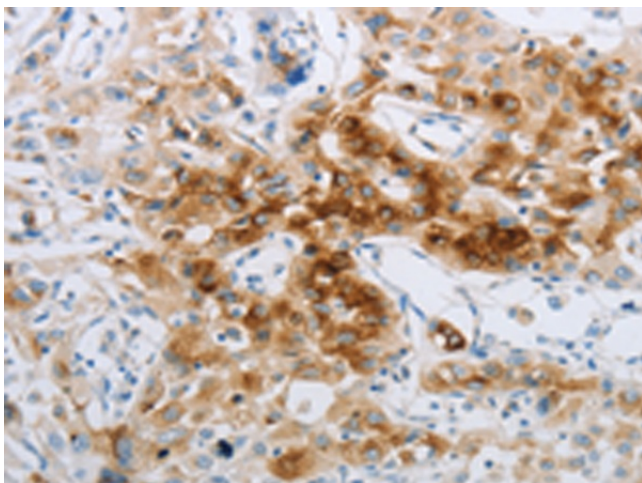
Product Type:	Primary Antibodies
Applications:	IHC
Recommended Dilution:	IHC: 15-50 Positive control: Human lung cancer Predicted cell location: Cytoplasm
Reactivity:	Human, Mouse
Host:	Rabbit
Isotype:	IgG
Clonality:	Polyclonal
Immunogen:	Synthetic peptide corresponding to a region derived from 367-381 amino acids of human neuropeptide Y receptor Y2
Formulation:	PBS pH7.3, 0.05% NaN <sub>3</sub> , 50% glycerol
Purification:	Antigen affinity purification
Conjugation:	Unconjugated
Storage:	Store at -20°C as received.
Stability:	Stable for 12 months from date of receipt.
Gene Name:	neuropeptide Y receptor Y2
Database Link:	<a href="#">NP_000901</a> <a href="#">Entrez Gene 18167 Mouse</a> <a href="#">Entrez Gene 4887 Human</a> <a href="#">P49146</a>
Background:	Neuropeptide Y receptor type 2 (Y2R) is a protein that in humans is encoded by the NPY2R gene. Receptor for neuropeptide Y and peptide YY. The rank order of affinity of this receptor for pancreatic polypeptides is PYY > NPY > PYY (3-36) > NPY (2-36) > [Ile-31; Gln-34] PP > [Leu-31; Pro-34] NPY > PP; [Pro-34] PYY and NPY free acid. High levels in amygdala; corpus callosum; hippocampus and subthalamic nucleus. Also detectable in caudate nucleus; hypothalamus and substantia nigra.
Synonyms:	NPY2-R
Protein Families:	Druggable Genome, GPCR, Transmembrane



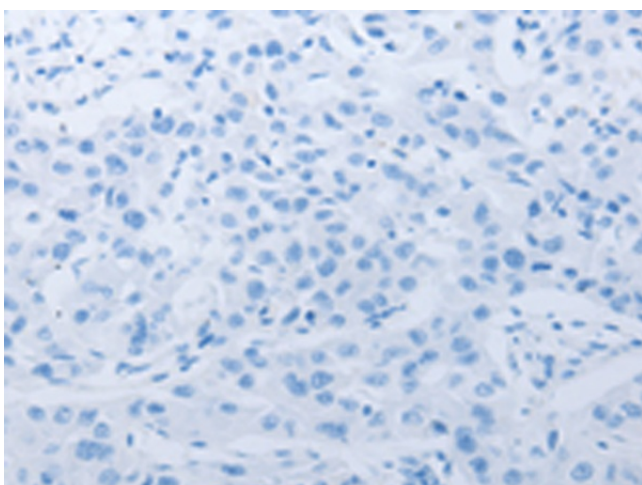
[View online »](#)

Protein Pathways: Neuroactive ligand-receptor interaction

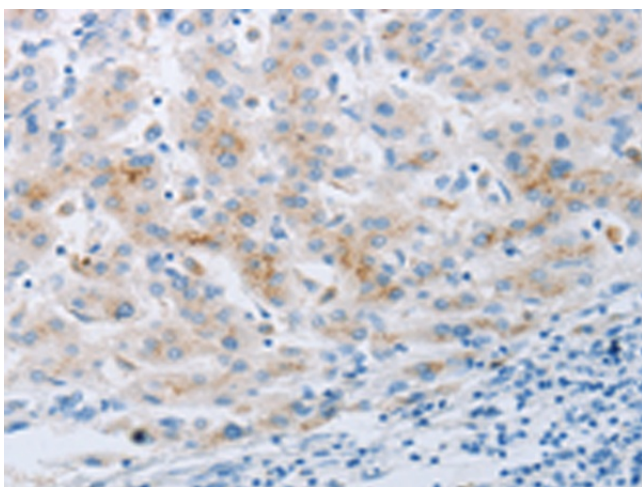
### Product images:



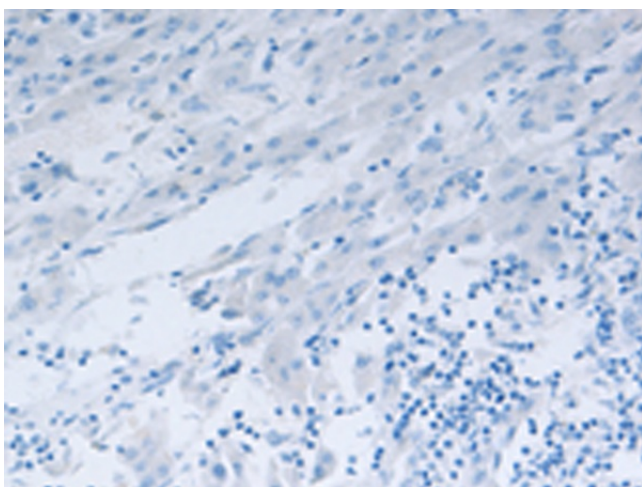
Immunohistochemistry of paraffin-embedded Human lung cancer tissue using [TA323533] (NPY2R Antibody) at dilution 1/20 (Original magnification:  $\times 200$ )



Immunohistochemistry of paraffin-embedded Human lung cancer tissue using [TA323533] (NPY2R Antibody) at dilution 1/20, treated with synthetic peptide. (Original magnification:  $\times 200$ )



Immunohistochemistry of paraffin-embedded Human liver cancer tissue using [TA323533] (NPY2R Antibody) at dilution 1/20 (Original magnification:  $\times 200$ )



Immunohistochemistry of paraffin-embedded Human liver cancer tissue using [TA323533] (NPY2R Antibody) at dilution 1/20, treated with synthetic peptide. (Original magnification:  $\times 200$ )