

## Product datasheet for **TA323532**

### Nociceptin receptor (OPRL1) Rabbit Polyclonal Antibody

#### Product data:

Product Type:	Primary Antibodies
Applications:	WB
Recommended Dilution:	WB: 1000-5000 WB positive control: Human liver cancer tissue
Reactivity:	Human, Mouse, Rat
Host:	Rabbit
Isotype:	IgG
Clonality:	Polyclonal
Immunogen:	Synthetic peptide corresponding to a region derived from 360-380 amino acids of Human opiate receptor-like 1
Formulation:	PBS pH7.3, 0.05% NaN <sub>3</sub> , 50% glycerol
Concentration:	lot specific
Purification:	Antigen affinity purification
Conjugation:	Unconjugated
Storage:	Store at -20°C as received.
Stability:	Stable for 12 months from date of receipt.
Predicted Protein Size:	41 kDa
Gene Name:	opiod related nociceptin receptor 1
Database Link:	<a href="#">NP_000904</a> <a href="#">Entrez Gene 18389 Mouse</a> <a href="#">Entrez Gene 29256 Rat</a> <a href="#">Entrez Gene 4987 Human</a> <a href="#">P41146</a>
Background:	The protein encoded by this gene is a G protein-coupled receptor whose expression can be induced by phytohemagglutinin. The encoded integral membrane protein is a receptor for the 17 aa neuropeptide nociceptin/orphanin FQ. This gene may be involved in the regulation of numerous brain activities; particularly instinctive and emotional behaviors. A promoter for this gene also functions as a promoter for another gene; regulator of G-protein signalling 19 (RGS19); located on the opposite strand. Three transcript variants encoding the same protein have been found for this gene.



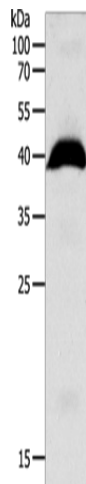
[View online »](#)

**Synonyms:** KOR-3; NOCIR; NOP; NOPr; OOR; ORL1

**Protein Families:** Druggable Genome, GPCR, Transmembrane

**Protein Pathways:** Neuroactive ligand-receptor interaction

**Product images:**



Gel: 10%SDS-PAGE  
Lysate: 40  $\mu$ g  
Lane: Human liver cancer tissue  
Primary antibody: TA323532 (OPRL1 Antibody) at dilution 1/1100  
Secondary antibody: Goat anti rabbit IgG at 1/8000 dilution  
Exposure time: 1 minute