

Product datasheet for **TA323527**

ACTH (POMC) Rabbit Polyclonal Antibody

Product data:

Product Type:	Primary Antibodies
Applications:	IHC, WB
Recommended Dilution:	WB: 1000-5000 WB positive control: Human liver cancer tissue IHC: 15-50 Positive control: Human brain Predicted cell location: Nucleus
Reactivity:	Human, Mouse
Host:	Rabbit
Isotype:	IgG
Clonality:	Polyclonal
Immunogen:	Synthetic peptide corresponding to a region derived from 255-267 amino acids of Human proopiomelanocortin
Formulation:	PBS pH7.3, 0.05% NaN ₃ , 50% glycerol
Concentration:	lot specific
Purification:	Antigen affinity purification
Conjugation:	Unconjugated
Storage:	Store at -20°C as received.
Stability:	Stable for 12 months from date of receipt.
Predicted Protein Size:	29 kDa
Gene Name:	proopiomelanocortin
Database Link:	NP_000930 Entrez Gene 18976 Mouse Entrez Gene 5443 Human P01189



[View online »](#)

Background:

This gene encodes a polypeptide hormone precursor that undergoes extensive; tissue-specific; post-translational processing via cleavage by subtilisin-like enzymes known as prohormone convertases. There are eight potential cleavage sites within the polypeptide precursor and; depending on tissue type and the available convertases; processing may yield as many as ten biologically active peptides involved in diverse cellular functions. The encoded protein is synthesized mainly in corticotroph cells of the anterior pituitary where four cleavage sites are used; adrenocorticotrophin; essential for normal steroidogenesis and the maintenance of normal adrenal weight; and lipotropin beta are the major end products. In other tissues; including the hypothalamus; placenta; and epithelium; all cleavage sites may be used; giving rise to peptides with roles in pain and energy homeostasis; melanocyte stimulation; and immune modulation. These include several distinct melanotropins; lipotropins; and endorphins that are contained within the adrenocorticotrophin and beta-lipotropin peptides. Mutations in this gene have been associated with early onset obesity; adrenal insufficiency; and red hair pigmentation. Alternatively spliced transcript variants encoding the same protein have been described.?

Synonyms:

ACTH; CLIP; LPH; MSH; NPP; POC

Protein Families:

Druggable Genome

Protein Pathways:

Adipocytokine signaling pathway, Melanogenesis

Product images:

Gel: 10%SDS-PAGE

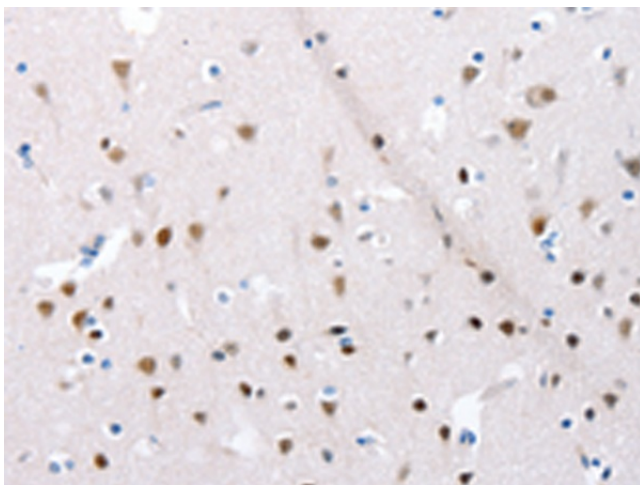
Lysate: 40 µg

Lane: Human liver cancer tissue

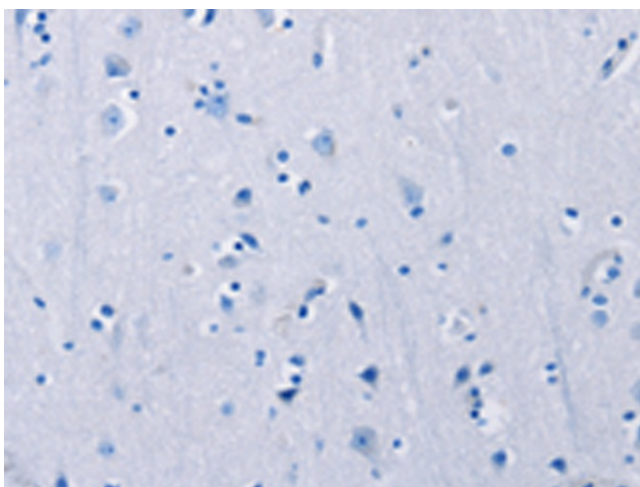
Primary antibody: TA323527 (POMC Antibody) at dilution 1/450

Secondary antibody: Goat anti rabbit IgG at 1/8000 dilution

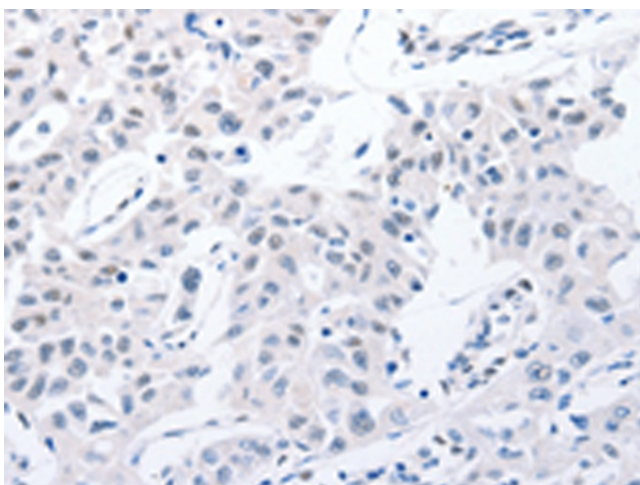
Exposure time: 1 minute



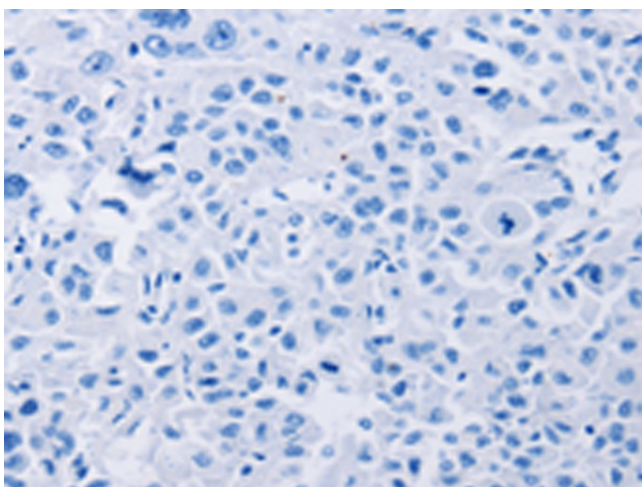
Immunohistochemistry of paraffin-embedded Human brain tissue using TA323527 (POMC Antibody) at dilution 1/30 (Original magnification: $\times 200$)



Immunohistochemistry of paraffin-embedded Human brain tissue using TA323527 (POMC Antibody) at dilution 1/30, treated with synthetic peptide. (Original magnification: $\times 200$)



Immunohistochemistry of paraffin-embedded Human lung cancer tissue using TA323527 (POMC Antibody) at dilution 1/30 (Original magnification: $\times 200$)



Immunohistochemistry of paraffin-embedded Human lung cancer tissue using TA323527 (POMC Antibody) at dilution 1/30, treated with synthetic peptide. (Original magnification: $\times 200$)