

## Product datasheet for **TA323524S**

### ACTH (POMC) Rabbit Polyclonal Antibody

#### Product data:

Product Type:	Primary Antibodies
Applications:	IHC, WB
Recommended Dilution:	WB: 500-2000 WB positive control: Mouse liver tissue and Mouse skeletal muscle tissue lysates IHC: 25-50 Positive control: Human colorectal cancer Predicted cell location: Secreted
Reactivity:	Human, Mouse, Rat
Host:	Rabbit
Isotype:	IgG
Clonality:	Polyclonal
Immunogen:	Synthetic peptide corresponding to a region derived from 253-267 amino acids of human proopiomelanocortin
Formulation:	PBS pH7.3, 0.05% NaN <sub>3</sub> , 50% glycerol
Purification:	Antigen affinity purification
Conjugation:	Unconjugated
Storage:	Store at -20°C as received.
Stability:	Stable for 12 months from date of receipt.
Predicted Protein Size:	30 kDa
Gene Name:	proopiomelanocortin
Database Link:	<a href="#">NP_000930</a> <a href="#">Entrez Gene 18976 Mouse</a> <a href="#">Entrez Gene 24664 Rat</a> <a href="#">Entrez Gene 5443 Human</a> <a href="#">P01189</a>



[View online »](#)

**Background:**

This gene encodes a polypeptide hormone precursor that undergoes extensive; tissue-specific; post-translational processing via cleavage by subtilisin-like enzymes known as prohormone convertases. There are eight potential cleavage sites within the polypeptide precursor and; depending on tissue type and the available convertases; processing may yield as many as ten biologically active peptides involved in diverse cellular functions. The encoded protein is synthesized mainly in corticotroph cells of the anterior pituitary where four cleavage sites are used; adrenocorticotrophin; essential for normal steroidogenesis and the maintenance of normal adrenal weight; and lipotropin beta are the major end products. In other tissues; including the hypothalamus; placenta; and epithelium; all cleavage sites may be used; giving rise to peptides with roles in pain and energy homeostasis; melanocyte stimulation; and immune modulation.

**Synonyms:**

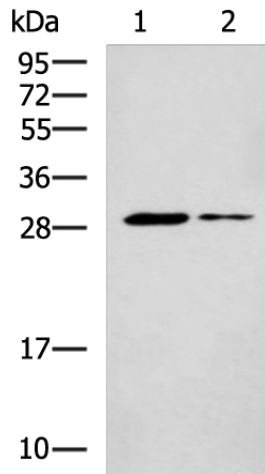
ACTH; CLIP; LPH; MSH; NPP; POC

**Protein Families:**

Druggable Genome

**Protein Pathways:**

Adipocytokine signaling pathway, Melanogenesis

**Product images:**

Gel: 12%SDS-PAGE

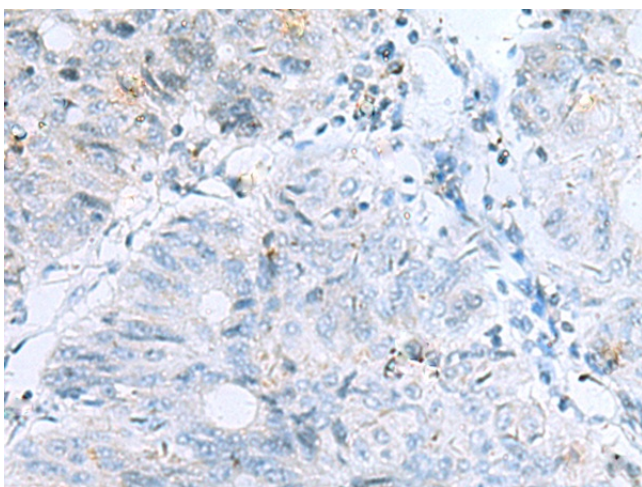
Lysate: 40 µg

Lane 1-2: Mouse liver tissue and Mouse skeletal muscle tissue lysates

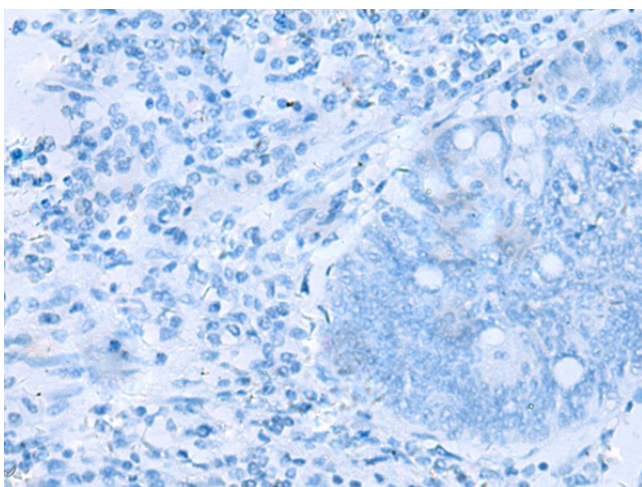
Primary antibody: [TA323524] (POMC Antibody) at dilution 1/800

Secondary antibody: Goat anti rabbit IgG at 1/5000 dilution

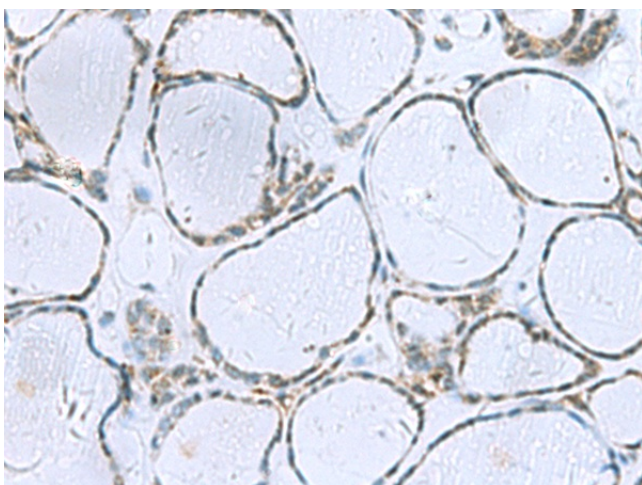
Exposure time: 5 minutes



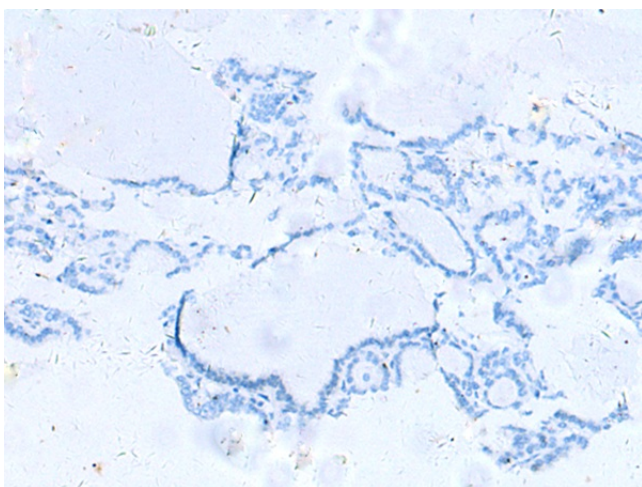
Immunohistochemistry of paraffin-embedded Human colorectal cancer tissue using [TA323524] (POMC Antibody) at dilution 1/35 (Original magnification:  $\times 200$ )



Immunohistochemistry of paraffin-embedded Human colorectal cancer tissue using [TA323524] (POMC Antibody) at dilution 1/35, treated with synthetic peptide. (Original magnification:  $\times 200$ )



Immunohistochemistry of paraffin-embedded Human thyroid cancer tissue using [TA323524] (POMC Antibody) at dilution 1/35 (Original magnification:  $\times 200$ )



Immunohistochemistry of paraffin-embedded Human thyroid cancer tissue using [TA323524] (POMC Antibody) at dilution 1/35, treated with synthetic peptide. (Original magnification:  $\times 200$ )