

## Product datasheet for **TA323522S**

### Alpha 2 Antiplasmin (SERPINF2) Rabbit Polyclonal Antibody

#### Product data:

Product Type:	Primary Antibodies
Applications:	IHC, WB
Recommended Dilution:	WB: 500-2000 WB positive control: Human normal stomach tissue IHC: 50-200 Positive control: Human liver cancer Predicted cell location: Cytoplasm
Reactivity:	Human
Host:	Rabbit
Isotype:	IgG
Clonality:	Polyclonal
Immunogen:	Synthetic peptide corresponding to a region derived from 70-84 amino acids of human serpin peptidase inhibitor, clade F (alpha-2 antiplasmin, pigment epithelium derived factor), member 2
Formulation:	PBS pH7.3, 0.05% NaN <sub>3</sub> , 50% glycerol
Purification:	Antigen affinity purification
Conjugation:	Unconjugated
Storage:	Store at -20°C as received.
Stability:	Stable for 12 months from date of receipt.
Gene Name:	serpin family F member 2
Database Link:	<a href="#">NP_000925</a> <a href="#">Entrez Gene 5345 Human</a> <a href="#">P08697</a>
Background:	This gene encodes a member of the serpin family of serine protease inhibitors. The protein is a major inhibitor of plasmin, which degrades fibrin and various other proteins. Consequently, the proper function of this gene has a major role in regulating the blood clotting pathway. Mutations in this gene result in alpha-2-plasmin inhibitor deficiency, which is characterized by severe hemorrhagic diathesis. Multiple transcript variants encoding different isoforms have been found for this gene.

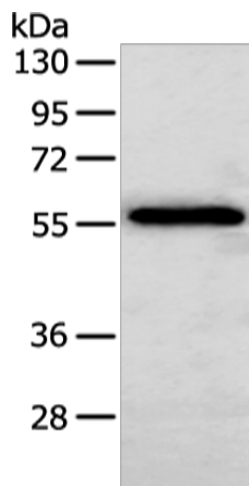


[View online »](#)

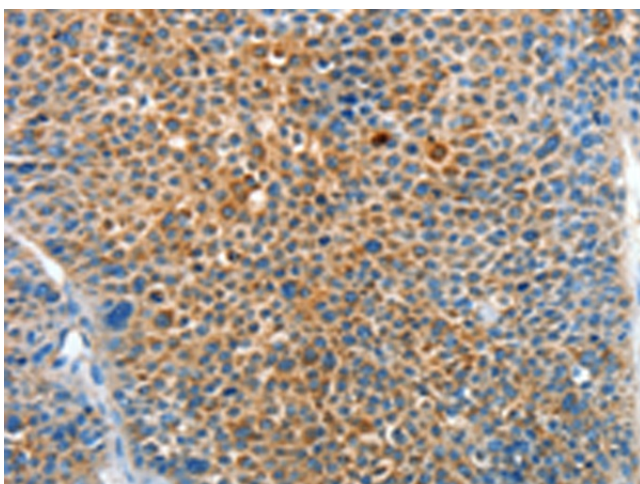
**Synonyms:** A2AP; AAP; ALPHA-2-PI; API; PLI

**Protein Families:** Druggable Genome, Secreted Protein

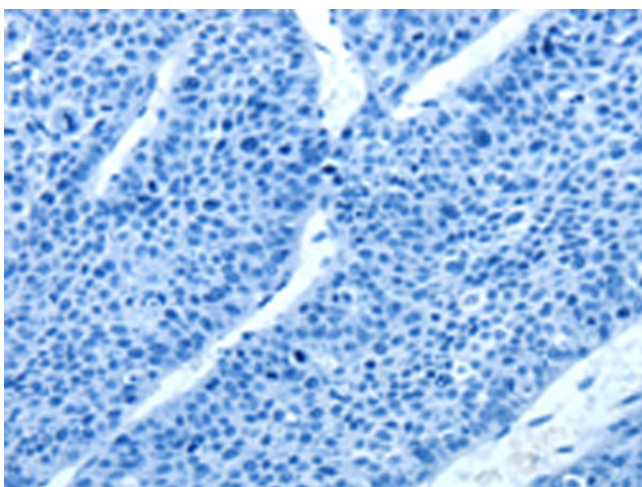
**Protein Pathways:** Complement and coagulation cascades

**Product images:**

Gel: 8%SDS-PAGE  
Lysate: 40 µg  
Lane: Human normal stomach tissue  
Primary antibody: [TA323522] (SERPINF2 Antibody) at dilution 1/200  
Secondary antibody: Goat anti rabbit IgG at 1/8000 dilution  
Exposure time: 10 seconds



Immunohistochemistry of paraffin-embedded Human liver cancer tissue using [TA323522] (SERPINF2 Antibody) at dilution 1/50 (Original magnification: ×200)



Immunohistochemistry of paraffin-embedded Human liver cancer tissue using [TA323522] (SERPINF2 Antibody) at dilution 1/50, treated with synthetic peptide. (Original magnification: ×200)