

Product datasheet for **TA323518**

EP2 (PTGER2) Rabbit Polyclonal Antibody

Product data:

Product Type:	Primary Antibodies
Applications:	WB
Recommended Dilution:	WB: 500-2000 WB positive control: A549 cells
Reactivity:	Human
Host:	Rabbit
Isotype:	IgG
Clonality:	Polyclonal
Immunogen:	Synthetic peptide corresponding to a region derived from 1-13 amino acids of Human prostaglandin E receptor 2 (subtype EP2), 53kDa
Formulation:	PBS pH7.3, 0.05% NaN ₃ , 50% glycerol
Concentration:	lot specific
Purification:	Antigen affinity purification
Conjugation:	Unconjugated
Storage:	Store at -20°C as received.
Stability:	Stable for 12 months from date of receipt.
Predicted Protein Size:	40 kDa
Gene Name:	prostaglandin E receptor 2
Database Link:	NP_000947 Entrez Gene 5732 Human P43116
Background:	This gene encodes a receptor for prostaglandin E ₂ ; a metabolite of arachidonic acid which has different biologic activities in a wide range of tissues. Mutations in this gene are associated with aspirin-induced susceptibility to asthma. Prostaglandin E ₂ receptor (53kDa); also known as EP ₂ ; is a prostaglandin receptor for prostaglandin E ₂ . It is encoded by the human gene PTGER2. Receptor for prostaglandin E ₂ (PGE ₂). The activity of this receptor is mediated by G(s) proteins that stimulate adenylate cyclase. The subsequent raise in intracellular cAMP is responsible for the relaxing effect of this receptor on smooth muscle.



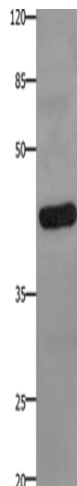
[View online »](#)

Synonyms: EP2

Protein Families: Druggable Genome, GPCR, Transmembrane

Protein Pathways: Neuroactive ligand-receptor interaction

Product images:



Gel: 10%SDS-PAGE
Lysate: 40 μ g
Lane: A549 cells
Primary antibody: TA323518 (PTGER2 Antibody)
at dilution 1/100
Secondary antibody: Goat anti rabbit IgG at
1/8000 dilution
Exposure time: 1 minute