

## Product datasheet for **TA323513**

### SMAD5 Rabbit Polyclonal Antibody

#### Product data:

Product Type:	Primary Antibodies
Applications:	IHC
Recommended Dilution:	IHC: 25-100 Positive control: Human breast cancer Predicted cell location: Cytoplasm
Reactivity:	Human, Mouse, Rat
Host:	Rabbit
Isotype:	IgG
Clonality:	Polyclonal
Immunogen:	Fusion protein corresponding to a region derived from C terminal 300 amino acids of human SMAD family member 5
Formulation:	PBS pH7.3, 0.05% NaN <sub>3</sub> , 50% glycerol
Concentration:	lot specific
Purification:	Antigen affinity purification
Conjugation:	Unconjugated
Storage:	Store at -20°C as received.
Stability:	Stable for 12 months from date of receipt.
Gene Name:	SMAD family member 5
Database Link:	<a href="#">NP_005894</a> <a href="#">Entrez Gene 17129 Mouse</a> <a href="#">Entrez Gene 59328 Rat</a> <a href="#">Entrez Gene 4090 Human</a> <a href="#">Q99717</a>
Background:	The protein encoded by this gene is involved in the TGF-beta signaling pathway that results in an inhibition of the proliferation of hematopoietic progenitor cells. The encoded protein is activated by BMP type 1 receptor kinase. Three transcript variants encoding the same protein have been found for this gene.
Synonyms:	DWFC; JV5-1; MADH5

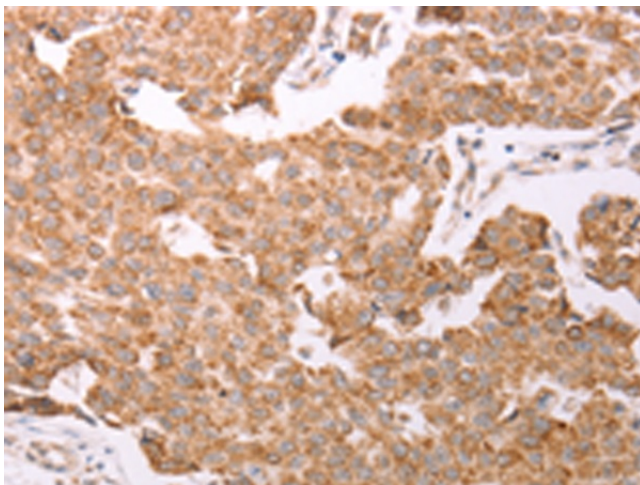


[View online »](#)

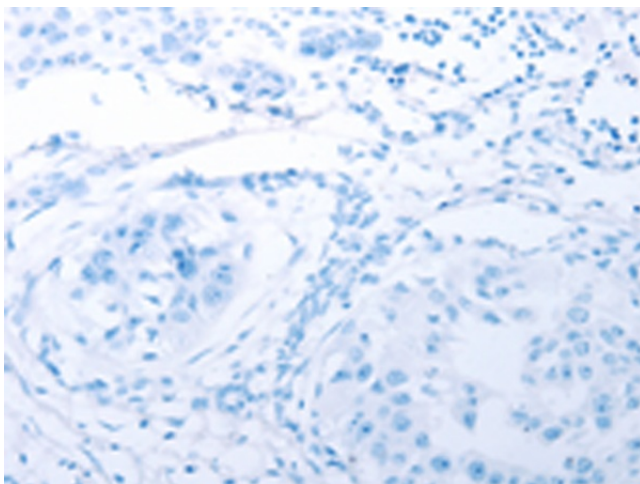
**Protein Families:** Cancer stem cells, Druggable Genome, ES Cell Differentiation/IPS, Stem cell relevant signaling - JAK/STAT signaling pathway, Stem cell relevant signaling - TGFb/BMP signaling pathway, Transcription Factors

**Protein Pathways:** TGF-beta signaling pathway

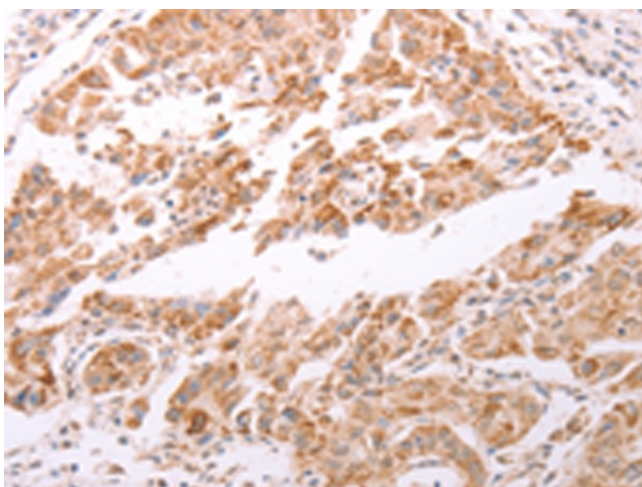
**Product images:**



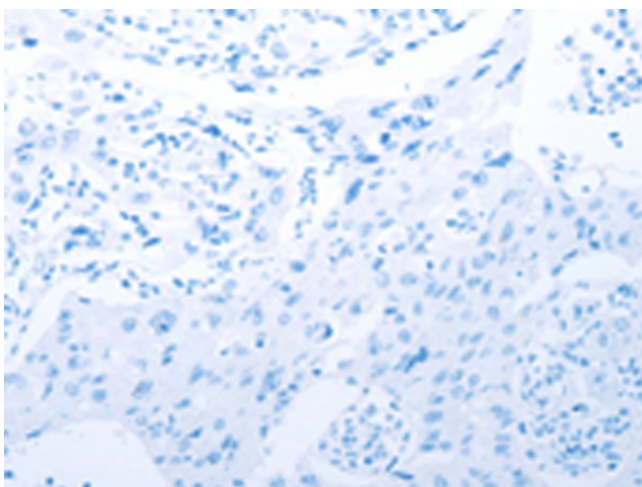
Immunohistochemistry of paraffin-embedded Human breast cancer tissue using TA323513 (SMAD5 Antibody) at dilution 1/20 (Original magnification: x200)



Immunohistochemistry of paraffin-embedded Human breast cancer tissue using TA323513 (SMAD5 Antibody) at dilution 1/20, treated with fusion protein. (Original magnification: x200)



Immunohistochemistry of paraffin-embedded Human lung cancer tissue using TA323513 (SMAD5 Antibody) at dilution 1/20 (Original magnification:  $\times 200$ )



Immunohistochemistry of paraffin-embedded Human lung cancer tissue using TA323513 (SMAD5 Antibody) at dilution 1/20, treated with fusion protein. (Original magnification:  $\times 200$ )