

## Product datasheet for **TA323510**

### RPLP0 Rabbit Polyclonal Antibody

#### Product data:

Product Type:	Primary Antibodies
Applications:	IHC, WB
Recommended Dilution:	WB: 500-2000 WB positive control: NIH/3T3, A431 and Jurkat cells IHC: 50-200 Positive control: Human gastric cancer Predicted cell location: Cytoplasm
Reactivity:	Human, Mouse, Rat
Host:	Rabbit
Isotype:	IgG
Clonality:	Polyclonal
Immunogen:	Full length fusion protein
Formulation:	PBS pH7.3, 0.05% NaN <sub>3</sub> , 50% glycerol
Concentration:	lot specific
Purification:	Antigen affinity purification
Conjugation:	Unconjugated
Storage:	Store at -20°C as received.
Stability:	Stable for 12 months from date of receipt.
Predicted Protein Size:	34 kDa
Gene Name:	ribosomal protein lateral stalk subunit P0
Database Link:	<a href="#">NP_000993</a> <a href="#">Entrez Gene 11837 Mouse</a> <a href="#">Entrez Gene 64205 Rat</a> <a href="#">Entrez Gene 6175 Human</a> <a href="#">P05388</a>



[View online »](#)

**Background:**

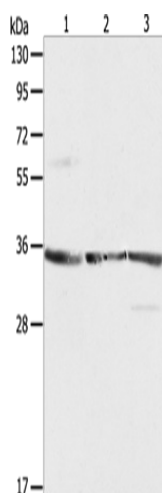
Ribosomes; the organelles that catalyze protein synthesis; consist of a small 40S subunit and a large 60S subunit. Together these subunits are composed of 4 RNA species and approximately 80 structurally distinct proteins. This gene encodes a ribosomal protein that is a component of the 60S subunit. The protein; which is the functional equivalent of the E. coli L10 ribosomal protein; belongs to the L10P family of ribosomal proteins. It is a neutral phosphoprotein with a C-terminal end that is nearly identical to the C-terminal ends of the acidic ribosomal phosphoproteins P1 and P2. The P0 protein can interact with P1 and P2 to form a pentameric complex consisting of P1 and P2 dimers; and a P0 monomer. The protein is located in the cytoplasm. Transcript variants derived from alternative splicing exist; they encode the same protein. As is typical for genes encoding ribosomal proteins; there are multiple processed pseudogenes of this gene dispersed through the genome.

**Synonyms:**

L10E; LP0; P0; PRLP0; RPP0

**Protein Pathways:**

Ribosome

**Product images:**

Gel: 10%SDS-PAGE

Lysate: 40 µg

Lane 1-3: NIH/3T3 cells

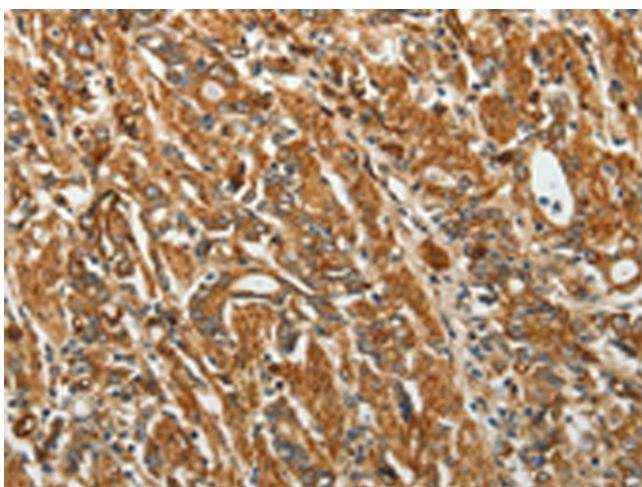
A431 cells

Jurkat cells

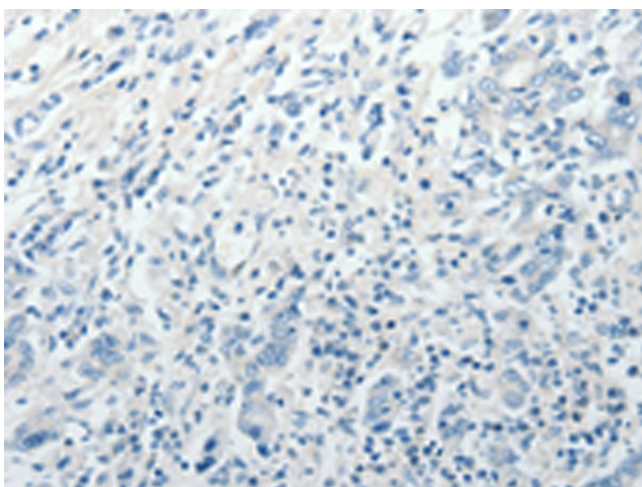
Primary antibody: TA323510 (RPLP0 Antibody) at dilution 1/750

Secondary antibody: Goat anti rabbit IgG at 1/8000 dilution

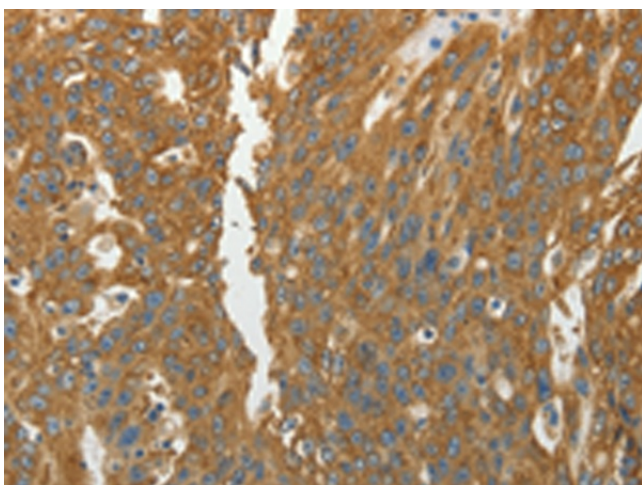
Exposure time: 1 minute



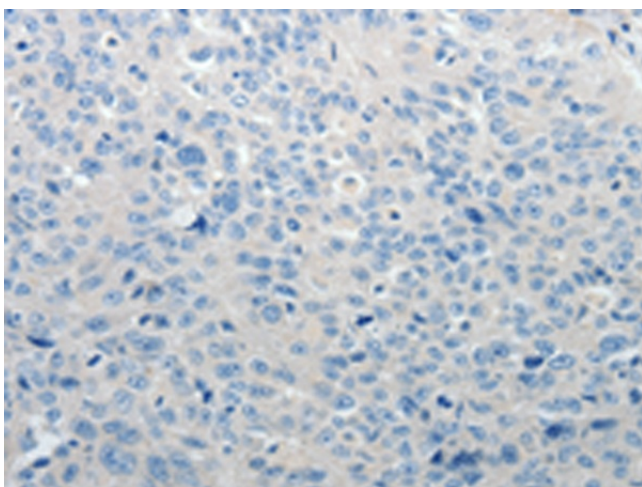
Immunohistochemistry of paraffin-embedded Human gastric cancer tissue using TA323510 (RPLP0 Antibody) at dilution 1/40 (Original magnification:  $\times 200$ )



Immunohistochemistry of paraffin-embedded Human gastric cancer tissue using TA323510 (RPLP0 Antibody) at dilution 1/40, treated with fusion protein. (Original magnification:  $\times 200$ )



Immunohistochemistry of paraffin-embedded Human ovarian cancer tissue using TA323510 (RPLP0 Antibody) at dilution 1/40 (Original magnification:  $\times 200$ )



Immunohistochemistry of paraffin-embedded Human ovarian cancer tissue using TA323510 (RPLP0 Antibody) at dilution 1/40, treated with fusion protein. (Original magnification: ×200)