

Product datasheet for **TA323507**

ABLIM1 Rabbit Polyclonal Antibody

Product data:

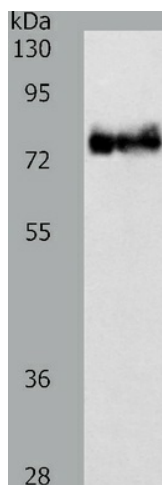
Product Type:	Primary Antibodies
Applications:	IHC, WB
Recommended Dilution:	ELISA: 1:2000-5000, WB: 1:500-2000, IHC: 1:25-100
Reactivity:	Human, Mouse, Rat
Host:	Rabbit
Isotype:	IgG
Clonality:	Polyclonal
Immunogen:	Fusion protein corresponding to a region derived from 401-651 amino acids of human actin binding LIM protein 1
Formulation:	PBS pH7.3, 0.05% NaN ₃ , 50% glycerol
Concentration:	lot specific
Purification:	Antigen affinity purification
Conjugation:	Unconjugated
Storage:	Store at -20°C as received.
Stability:	Stable for 12 months from date of receipt.
Predicted Protein Size:	88 kDa
Gene Name:	actin binding LIM protein 1
Database Link:	NP_001003407 Entrez Gene 226251 MouseEntrez Gene 307989 RatEntrez Gene 3983 Human Q14639
Background:	This gene encodes a cytoskeletal LIM protein that binds to actin filaments via a domain that is homologous to erythrocyte dematin. LIM domains, found in over 60 proteins, play key roles in the regulation of developmental pathways. LIM domains also function as protein-binding interfaces, mediating specific protein-protein interactions. The protein encoded by this gene could mediate such interactions between actin filaments and cytoplasmic targets. Alternatively spliced transcript variants encoding different isoforms have been identified.?
Synonyms:	ABLIM; abLIM-1; LIMAB1; LIMATIN



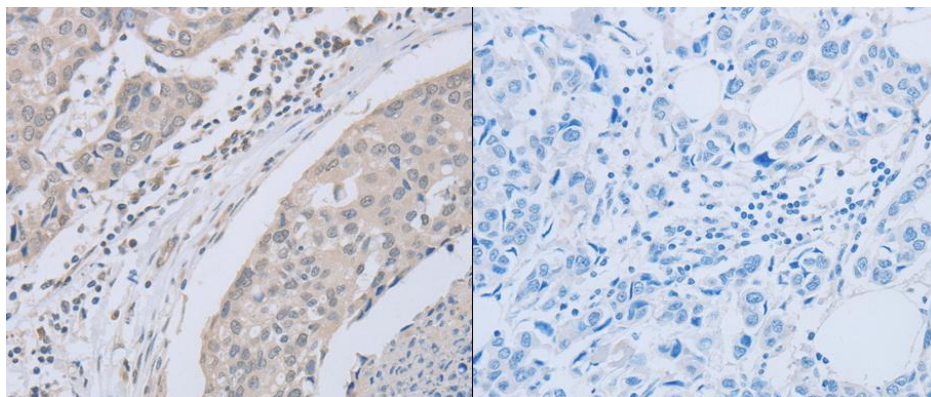
[View online »](#)

Protein Pathways: Axon guidance

Product images:



Predicted band size: 88 kDa. Positive control: Mouse heart tissue lysate. Recommended dilution: 1/500-2000. (Gel: 8%SDS-PAGE Lysate: 40 ug per lane Primary antibody: 1/650 dilution Secondary antibody: Goat anti Rabbit IgG - H&L (HRP) at 1/10000 dilution Exposure time: 40 seconds)



Predicted cell location: Cytoplasm. Positive control: Human breast cancer tissue. Recommended dilution: 1/25-100 The image on the left is immunohistochemistry of paraffin-embedded human breast cancer tissue using ABLIM1 antibody at dilution 1/30, on the right is treated with the fusion protein. (Original magnification:x200)