

## Product datasheet for **TA323502**

### GRK4 Rabbit Polyclonal Antibody

#### Product data:

Product Type:	Primary Antibodies
Applications:	IHC, WB
Recommended Dilution:	ELISA: 1:2000-10000, WB: 1:1000-5000, IHC: 1:50-200
Reactivity:	Human, Mouse, Rat
Host:	Rabbit
Isotype:	IgG
Clonality:	Polyclonal
Immunogen:	Fusion protein corresponding to a region derived from 36-145 amino acids of human G protein-coupled receptor kinase 4
Formulation:	PBS pH7.3, 0.05% NaN <sub>3</sub> , 50% glycerol
Concentration:	lot specific
Purification:	Antigen affinity purification
Conjugation:	Unconjugated
Storage:	Store at -20°C as received.
Stability:	Stable for 12 months from date of receipt.
Predicted Protein Size:	66 kDa
Gene Name:	G protein-coupled receptor kinase 4
Database Link:	<a href="#">NP_001004056</a> <a href="#">Entrez Gene 14772 Mouse</a> <a href="#">Entrez Gene 59077 Rat</a> <a href="#">Entrez Gene 2868 Human</a> <a href="#">P32298</a>
Background:	This gene encodes a member of the guanine nucleotide-binding protein (G protein)-coupled receptor kinase subfamily of the Ser/Thr protein kinase family. The protein phosphorylates the activated forms of G protein-coupled receptors thus initiating its deactivation. This gene has been linked to both genetic and acquired hypertension. Specifically phosphorylates the activated forms of G protein-coupled receptors. GRK4-alpha can phosphorylate rhodopsin and its activity is inhibited by calmodulin; the other three isoforms do not phosphorylate rhodopsin and do not interact with calmodulin. GRK4-alpha and GRK4-gamma phosphorylate DRD3. Phosphorylates ADRB2.



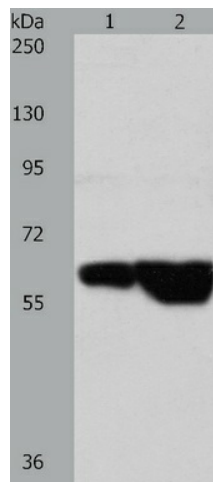
[View online »](#)

**Synonyms:** GPRK2L; GPRK4; GRK4a; IT11

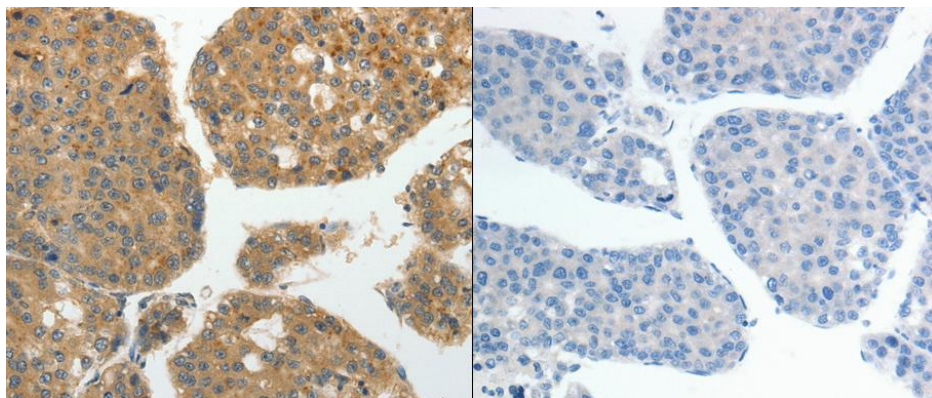
**Protein Families:** Druggable Genome, Protein Kinase

**Protein Pathways:** Chemokine signaling pathway, Endocytosis

### Product images:



Predicted band size: 66 kDa. Positive control: Hela and Jurkat cell lysate. Recommended dilution: 1/1000-5000. (Gel: 10%SDS-PAGE Lane 1: Hela cell lysate Lane 2: Jurkat cell lysate Lysates: 40 ug per lane Primary antibody: 1/700 dilution Secondary antibody: Goat anti Rabbit IgG - H&L (HRP) at 1/10000 dilution Exposure time: 40 seconds)



Predicted cell location: Cytoplasm. Positive control: Human liver cancer tissue. Recommended dilution: 1/50-200 The image on the left is immunohistochemistry of paraffin-embedded human liver cancer tissue using GRK4 antibody at dilution 1/40, on the right is treated with the fusion protein. (Original magnification:x200)