

Product datasheet for **TA323501**

GRK4 Rabbit Polyclonal Antibody

Product data:

Product Type:	Primary Antibodies
Applications:	IHC, WB
Recommended Dilution:	WB: 500-2000 WB positive control: PC3 cell lysate IHC: 50-100 Positive control: Human colorectal cancer Predicted cell location: Cytoplasm
Reactivity:	Human
Host:	Rabbit
Isotype:	IgG
Clonality:	Polyclonal
Immunogen:	Fusion protein corresponding to a region derived from 36-145 amino acids of human G protein-coupled receptor kinase 4
Formulation:	PBS pH7.3, 0.05% NaN ₃ , 50% glycerol
Concentration:	lot specific
Purification:	Antigen affinity purification
Conjugation:	Unconjugated
Storage:	Store at -20°C as received.
Stability:	Stable for 12 months from date of receipt.
Predicted Protein Size:	66 kDa
Gene Name:	G protein-coupled receptor kinase 4
Database Link:	NP_001004056 Entrez Gene 2868 Human P32298



[View online »](#)

Background:

This gene encodes a member of the guanine nucleotide-binding protein (G protein)-coupled receptor kinase subfamily of the Ser/Thr protein kinase family. The protein phosphorylates the activated forms of G protein-coupled receptors thus initiating its deactivation. This gene has been linked to both genetic and acquired hypertension. Specifically phosphorylates the activated forms of G protein-coupled receptors. GRK4-alpha can phosphorylate rhodopsin and its activity is inhibited by calmodulin; the other three isoforms do not phosphorylate rhodopsin and do not interact with calmodulin. GRK4-alpha and GRK4-gamma phosphorylate DRD3. Phosphorylates ADRB2.

Synonyms:

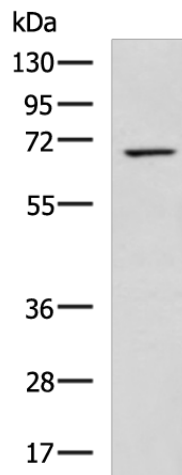
GPRK2L; GPRK4; GRK4a; IT11

Protein Families:

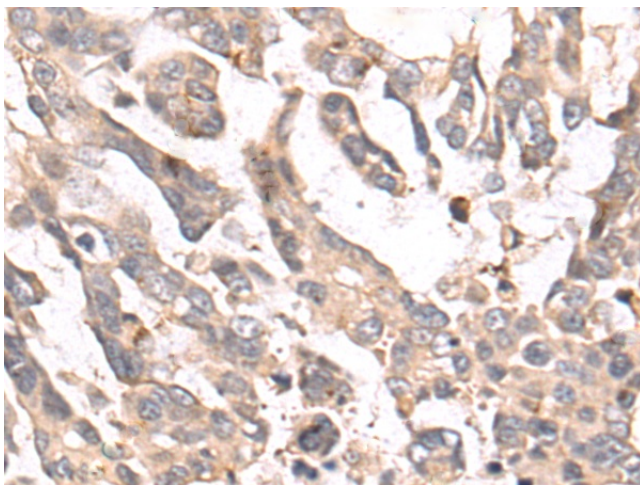
Druggable Genome, Protein Kinase

Protein Pathways:

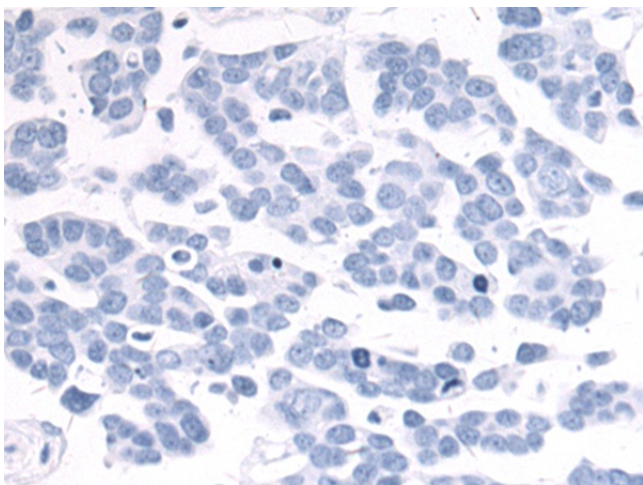
Chemokine signaling pathway, Endocytosis

Product images:

Gel: 8%SDS-PAGE
Lysate: 40 µg
Lane: PC3 cell lysate
Primary antibody: TA323501 (GRK4 Antibody) at dilution 1/700
Secondary antibody: Goat anti rabbit IgG at 1/5000 dilution
Exposure time: 2 minutes



Immunohistochemistry of paraffin-embedded Human colorectal cancer tissue using TA323501 (GRK4 Antibody) at dilution 1/50 (Original magnification: ×200)



Immunohistochemistry of paraffin-embedded Human colorectal cancer tissue using TA323501 (GRK4 Antibody) at dilution 1/50, treated with fusion protein. (Original magnification: ×200)