

## Product datasheet for **TA323500**

### CAPNS1 Rabbit Polyclonal Antibody

#### Product data:

Product Type:	Primary Antibodies
Applications:	IHC, WB
Recommended Dilution:	WB: 500-2000 WB positive control: K562 and NIH/3T3 cells IHC: 50-200 Positive control: Human ovarian cancer Predicted cell location: Cytoplasm
Reactivity:	Human, Mouse, Rat
Host:	Rabbit
Isotype:	IgG
Clonality:	Polyclonal
Immunogen:	Fusion protein corresponding to a region derived from 91-268 amino acids of human calpain, small subunit 1
Formulation:	PBS pH7.3, 0.05% NaN <sub>3</sub> , 50% glycerol
Concentration:	lot specific
Purification:	Antigen affinity purification
Conjugation:	Unconjugated
Storage:	Store at -20°C as received.
Stability:	Stable for 12 months from date of receipt.
Predicted Protein Size:	28 kDa
Gene Name:	calpain small subunit 1
Database Link:	<a href="#">NP_001003962</a> <a href="#">Entrez Gene 12336 Mouse</a> <a href="#">Entrez Gene 29156 Rat</a> <a href="#">Entrez Gene 826 Human</a> <a href="#">P04632</a>



[View online »](#)

**Background:**

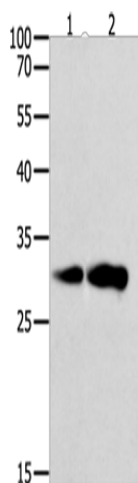
Calpains are a ubiquitous; well-conserved family of calcium-dependent; cysteine proteases. Calpain families have been implicated in neurodegenerative processes; as their activation can be triggered by calcium influx and oxidative stress. Calpain I and II are heterodimeric with distinct large subunits associated with common small subunits; all of which are encoded by different genes. This gene encodes a small subunit common to both calpain I and II and is associated with myotonic dystrophy. Two transcript variants encoding the same protein have been identified for this gene.

**Synonyms:**

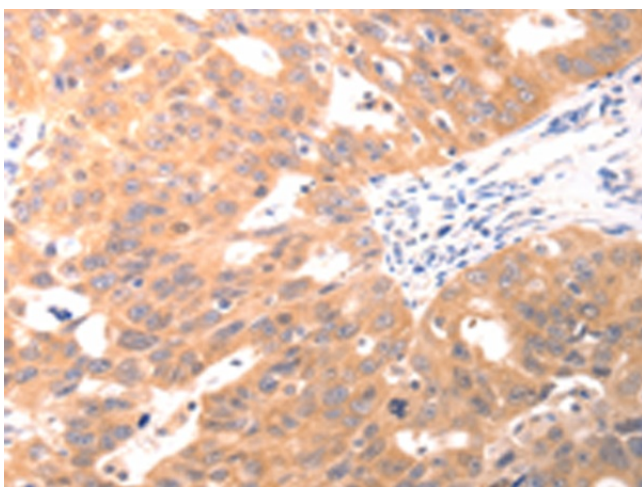
CALPAIN4; CANP; CANPS; CAPN4; CDPS; CSS1

**Protein Families:**

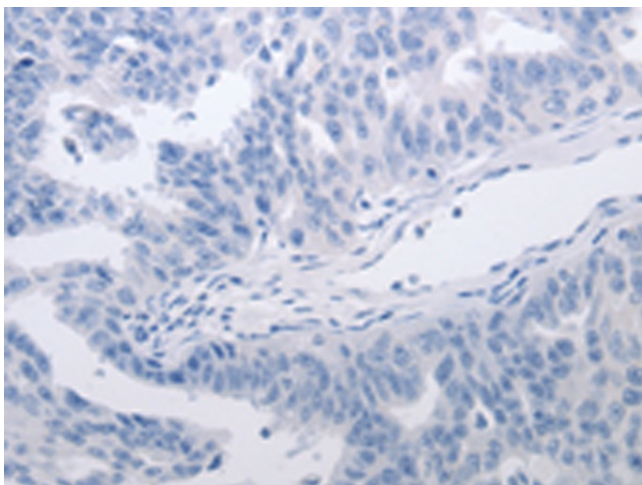
Druggable Genome, Protease

**Product images:**

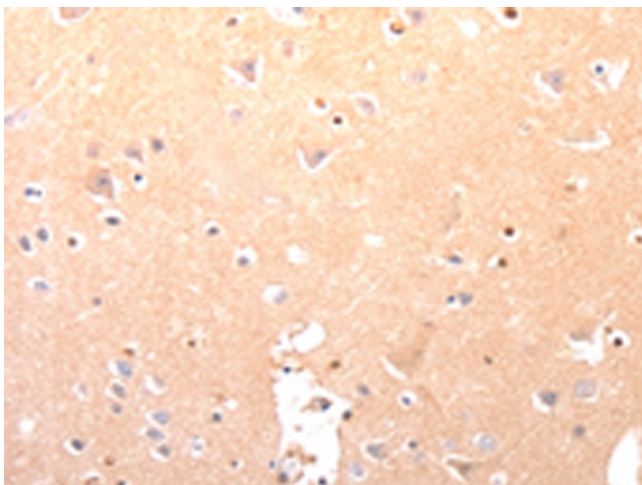
Gel: 12%SDS-PAGE  
Lysate: 60 µg  
Lane 1-2: K562 cells  
NIH/3T3 cells  
Primary antibody: TA323500 (CAPNS1 Antibody)  
at dilution 1/800  
Secondary antibody: Goat anti rabbit IgG at  
1/8000 dilution  
Exposure time: 15 seconds



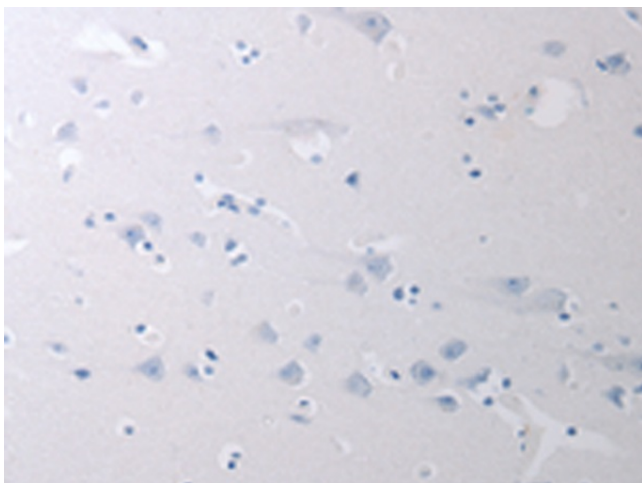
Immunohistochemistry of paraffin-embedded  
Human ovarian cancer tissue using TA323500  
(CAPNS1 Antibody) at dilution 1/60 (Original  
magnification: ×200)



Immunohistochemistry of paraffin-embedded Human ovarian cancer tissue using TA323500 (CAPNS1 Antibody) at dilution 1/60, treated with fusion protein. (Original magnification:  $\times 200$ )



Immunohistochemistry of paraffin-embedded Human brain tissue using TA323500 (CAPNS1 Antibody) at dilution 1/60 (Original magnification:  $\times 200$ )



Immunohistochemistry of paraffin-embedded Human brain tissue using TA323500 (CAPNS1 Antibody) at dilution 1/60, treated with fusion protein. (Original magnification:  $\times 200$ )