

## Product datasheet for **TA323498S**

### RBMS3 Rabbit Polyclonal Antibody

#### Product data:

Product Type:	Primary Antibodies
Applications:	IHC, WB
Recommended Dilution:	WB: 1000-5000 WB positive control: Human liver cancer tissue IHC: 50-100 Positive control: Human thyroid cancer Predicted cell location: Cytoplasm
Reactivity:	Human, Mouse
Host:	Rabbit
Isotype:	IgG
Clonality:	Polyclonal
Immunogen:	Synthetic peptide corresponding to a region derived from 425-437 amino acids of Human RNA binding motif, single stranded interacting protein 3
Formulation:	PBS pH7.3, 0.05% NaN <sub>3</sub> , 50% glycerol
Purification:	Antigen affinity purification
Conjugation:	Unconjugated
Storage:	Store at -20°C as received.
Stability:	Stable for 12 months from date of receipt.
Predicted Protein Size:	48 kDa
Gene Name:	RNA binding motif single stranded interacting protein 3
Database Link:	<a href="#">NP_001003793</a> <a href="#">Entrez Gene 207181 Mouse</a> <a href="#">Entrez Gene 27303 Human</a> <a href="#">Q6XE24</a>



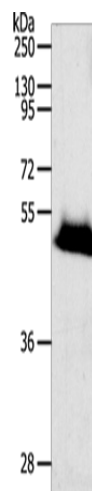
[View online »](#)

**Background:**

This gene encodes an RNA-binding protein that belongs to the c-myc gene single-strand binding protein family. These proteins are characterized by the presence of two sets of ribonucleoprotein consensus sequence (RNP-CS) that contain conserved motifs; RNP1 and RNP2; originally described in RNA binding proteins; and required for DNA binding. These proteins have been implicated in such diverse functions as DNA replication; gene transcription; cell cycle progression and apoptosis. The encoded protein was isolated by virtue of its binding to an upstream element of the alpha2(I) collagen promoter. The observation that this protein localizes mostly in the cytoplasm suggests that it may be involved in a cytoplasmic function such as controlling RNA metabolism; rather than transcription. Multiple alternatively spliced transcript variants encoding different isoforms have been found for this gene.

**Synonyms:**

FLJ36544

**Product images:**

Gel: 10%SDS-PAGE

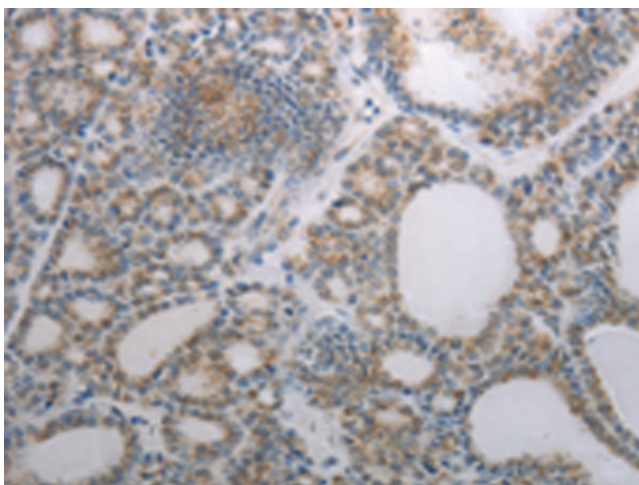
Lysate: 40 µg

Lane: Human liver cancer tissue

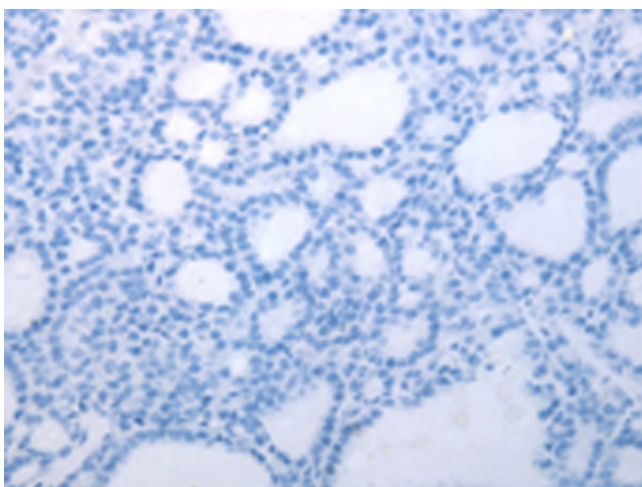
Primary antibody: [TA323498] (RBMS3 Antibody) at dilution 1/1000

Secondary antibody: Goat anti rabbit IgG at 1/8000 dilution

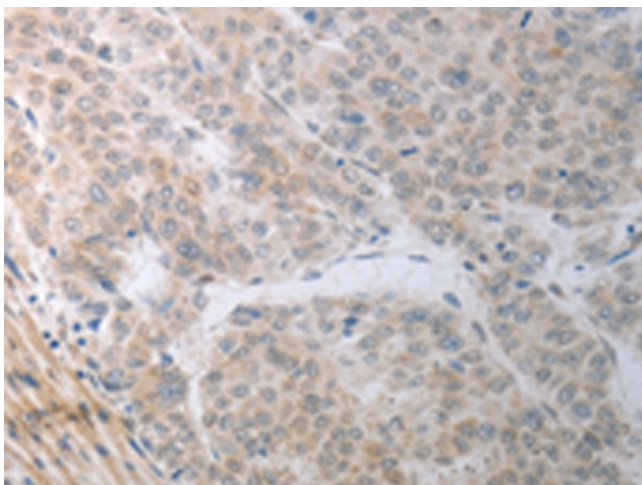
Exposure time: 20 seconds



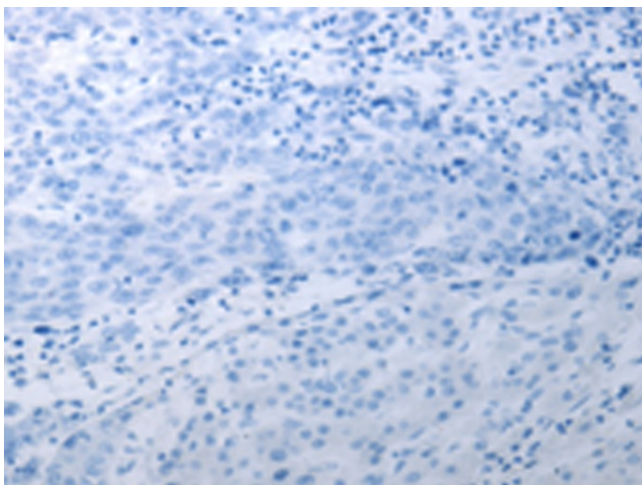
Immunohistochemistry of paraffin-embedded Human thyroid cancer tissue using [TA323498] (RBMS3 Antibody) at dilution 1/70 (Original magnification: ×200)



Immunohistochemistry of paraffin-embedded Human thyroid cancer tissue using [TA323498] (RBMS3 Antibody) at dilution 1/70, treated with synthetic peptide. (Original magnification:  $\times 200$ )



Immunohistochemistry of paraffin-embedded Human liver cancer tissue using [TA323498] (RBMS3 Antibody) at dilution 1/70 (Original magnification:  $\times 200$ )



Immunohistochemistry of paraffin-embedded Human liver cancer tissue using [TA323498] (RBMS3 Antibody) at dilution 1/70, treated with synthetic peptide. (Original magnification:  $\times 200$ )