

## Product datasheet for **TA323494**

### **MAGED1 Rabbit Polyclonal Antibody**

#### **Product data:**

Product Type:	Primary Antibodies
Applications:	IHC, WB
Recommended Dilution:	WB: 1000-5000 WB positive control: Human fetal brain tissue IHC: 25-100 Positive control: Human tonsil Predicted cell location: Cytoplasm
Reactivity:	Human, Mouse, Rat
Host:	Rabbit
Isotype:	IgG
Clonality:	Polyclonal
Immunogen:	Fusion protein corresponding to C terminal 300 amino acids of human melanoma antigen family D, 1
Formulation:	PBS pH7.3, 0.05% NaN <sub>3</sub> , 50% glycerol
Concentration:	lot specific
Purification:	Antigen affinity purification
Conjugation:	Unconjugated
Storage:	Store at -20°C as received.
Stability:	Stable for 12 months from date of receipt.
Predicted Protein Size:	86 kDa
Gene Name:	MAGE family member D1
Database Link:	<a href="#">NP_001005332</a> <a href="#">Entrez Gene 84469 Rat</a> <a href="#">Entrez Gene 94275 Mouse</a> <a href="#">Entrez Gene 9500 Human</a> <a href="#">Q9Y5V3</a>



[View online »](#)

**Background:**

This gene is a member of the melanoma antigen gene (MAGE) family. Most of the genes of this family encode tumor specific antigens that are not expressed in normal adult tissues except testis. Although the protein encoded by this gene shares strong homology with members of the MAGE family, it is expressed in almost all normal adult tissues. This gene has been demonstrated to be involved in the p75 neurotrophin receptor mediated programmed cell death pathway. Three transcript variants encoding two different isoforms have been found for this gene.

**Synonyms:**

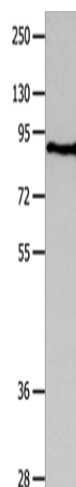
DLXIN-1; NRAGE

**Protein Families:**

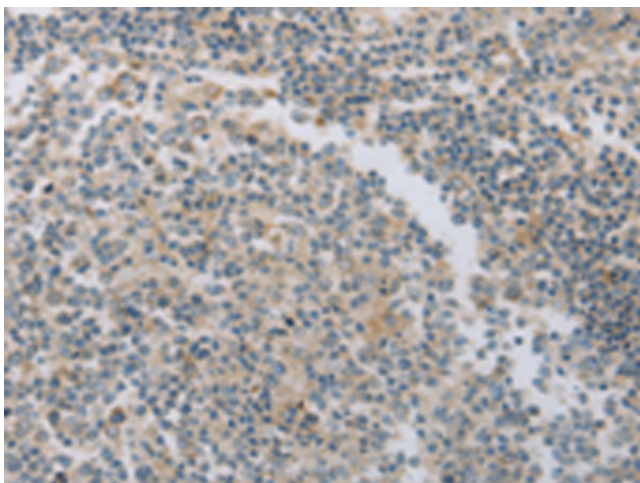
Druggable Genome

**Protein Pathways:**

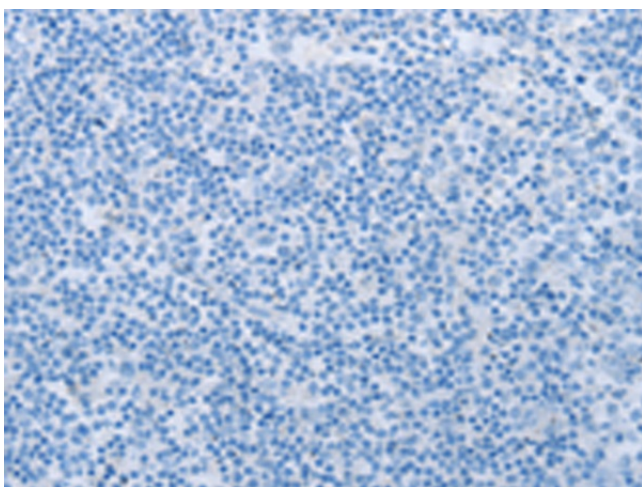
Neurotrophin signaling pathway

**Product images:**


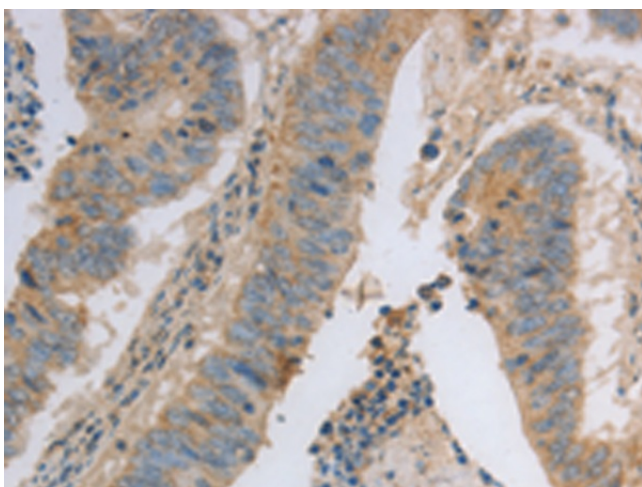
Gel: 10%SDS-PAGE  
Lysate: 40 µg  
Lane: Human fetal brain tissue  
Primary antibody: TA323494 (MAGED1 Antibody)  
at dilution 1/1200  
Secondary antibody: Goat anti rabbit IgG at  
1/8000 dilution  
Exposure time: 90 seconds



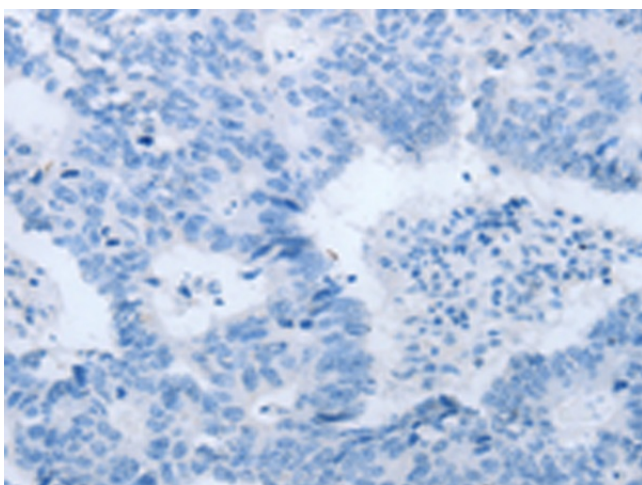
Immunohistochemistry of paraffin-embedded  
Human tonsil tissue using TA323494 (MAGED1  
Antibody) at dilution 1/30 (Original magnification:  
×200)



Immunohistochemistry of paraffin-embedded Human tonsil tissue using TA323494 (MAGED1 Antibody) at dilution 1/30, treated with fusion protein. (Original magnification: ×200)



Immunohistochemistry of paraffin-embedded Human colon cancer tissue using TA323494 (MAGED1 Antibody) at dilution 1/30 (Original magnification: ×200)



Immunohistochemistry of paraffin-embedded Human colon cancer tissue using TA323494 (MAGED1 Antibody) at dilution 1/30, treated with fusion protein. (Original magnification: ×200)