

## Product datasheet for **TA323493S**

### **MAGED1 Rabbit Polyclonal Antibody**

#### **Product data:**

<b>Product Type:</b>	Primary Antibodies
<b>Applications:</b>	IHC, WB
<b>Recommended Dilution:</b>	WB: 500-2000 WB positive control: A549, Jurkat and 293T cells IHC: 25-100 Positive control: Human colon cancer Predicted cell location: Cytoplasm
<b>Reactivity:</b>	Human, Mouse, Rat
<b>Host:</b>	Rabbit
<b>Isotype:</b>	IgG
<b>Clonality:</b>	Polyclonal
<b>Immunogen:</b>	Fusion protein corresponding to C terminal 300 amino acids of human melanoma antigen family D, 1
<b>Formulation:</b>	PBS pH7.3, 0.05% NaN <sub>3</sub> , 50% glycerol
<b>Purification:</b>	Antigen affinity purification
<b>Conjugation:</b>	Unconjugated
<b>Storage:</b>	Store at -20°C as received.
<b>Stability:</b>	Stable for 12 months from date of receipt.
<b>Predicted Protein Size:</b>	86 kDa
<b>Gene Name:</b>	MAGE family member D1
<b>Database Link:</b>	<a href="#">NP_001005332</a> <a href="#">Entrez Gene 84469 Rat</a> <a href="#">Entrez Gene 94275 Mouse</a> <a href="#">Entrez Gene 9500 Human</a> <a href="#">Q9Y5V3</a>



[View online »](#)

**Background:**

This gene is a member of the melanoma antigen gene (MAGE) family. Most of the genes of this family encode tumor specific antigens that are not expressed in normal adult tissues except testis. Although the protein encoded by this gene shares strong homology with members of the MAGE family, it is expressed in almost all normal adult tissues. This gene has been demonstrated to be involved in the p75 neurotrophin receptor mediated programmed cell death pathway. Three transcript variants encoding two different isoforms have been found for this gene.

**Synonyms:**

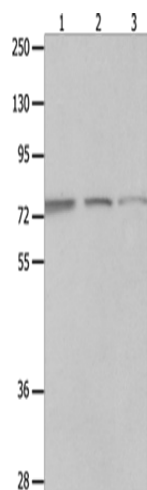
DLXIN-1; NRAGE

**Protein Families:**

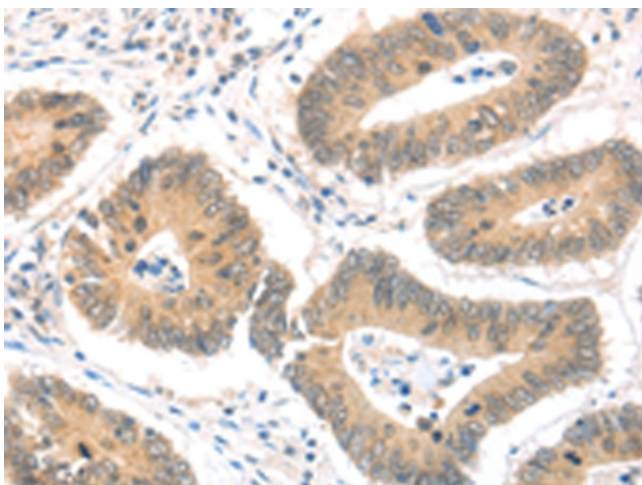
Druggable Genome

**Protein Pathways:**

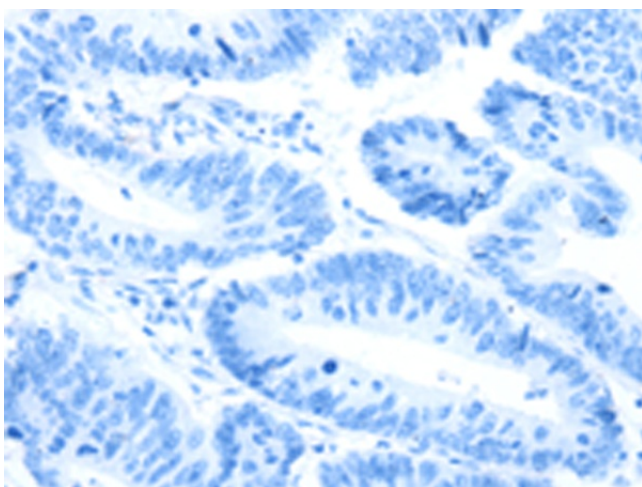
Neurotrophin signaling pathway

**Product images:**

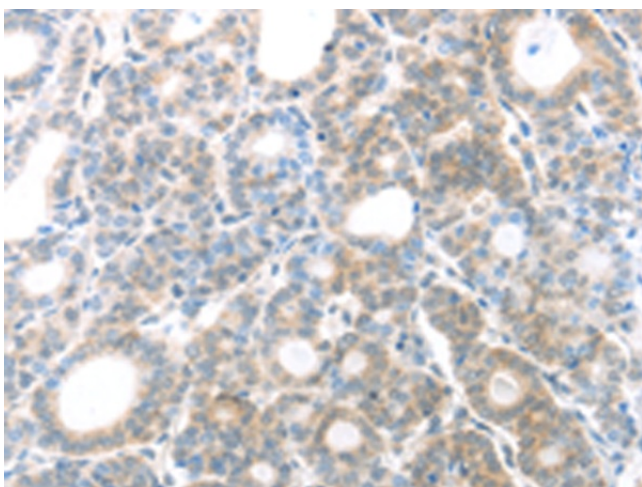
Gel: 10%SDS-PAGE  
Lysate: 40  $\mu$ g  
Lane 1-3: A549 cells  
Jurkat cells  
293T cells  
Primary antibody: [TA323493] (MAGED1 Antibody) at dilution 1/1200  
Secondary antibody: Goat anti rabbit IgG at 1/8000 dilution  
Exposure time: 3 minutes



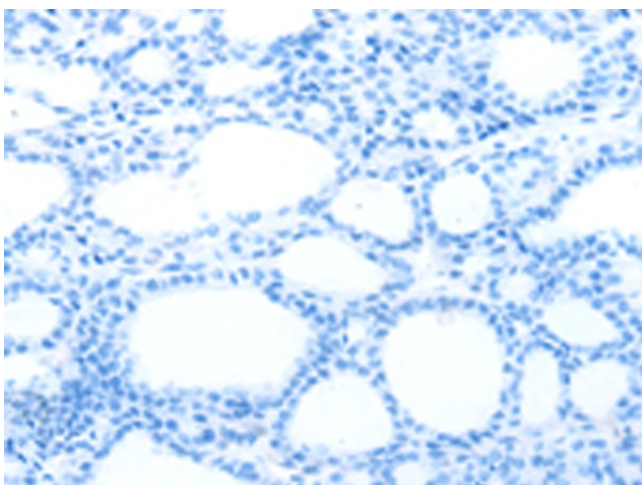
Immunohistochemistry of paraffin-embedded Human colon cancer tissue using [TA323493] (MAGED1 Antibody) at dilution 1/30 (Original magnification:  $\times$ 200)



Immunohistochemistry of paraffin-embedded Human colon cancer tissue using [TA323493] (MAGED1 Antibody) at dilution 1/30, treated with fusion protein. (Original magnification:  $\times 200$ )



Immunohistochemistry of paraffin-embedded Human thyroid cancer tissue using [TA323493] (MAGED1 Antibody) at dilution 1/30 (Original magnification:  $\times 200$ )



Immunohistochemistry of paraffin-embedded Human thyroid cancer tissue using [TA323493] (MAGED1 Antibody) at dilution 1/30, treated with fusion protein. (Original magnification:  $\times 200$ )