

## Product datasheet for **TA323492**

### PLAUR Rabbit Polyclonal Antibody

#### Product data:

Product Type:	Primary Antibodies
Applications:	IHC, WB
Recommended Dilution:	WB: 500-2000 WB positive control: A549 cells IHC: 50-200 Positive control: Human lung cancer Predicted cell location: Cytoplasm
Reactivity:	Human
Host:	Rabbit
Isotype:	IgG
Clonality:	Polyclonal
Immunogen:	Fusion protein corresponding to a region derived from 23-305 amino acids of human plasminogen activator, urokinase receptor
Formulation:	PBS pH7.3, 0.05% NaN <sub>3</sub> , 50% glycerol
Concentration:	lot specific
Purification:	Antigen affinity purification
Conjugation:	Unconjugated
Storage:	Store at -20°C as received.
Stability:	Stable for 12 months from date of receipt.
Predicted Protein Size:	37 kDa
Gene Name:	plasminogen activator, urokinase receptor
Database Link:	<a href="#">NP_001005376</a> <a href="#">Entrez Gene 5329 Human Q03405</a>



[View online »](#)

**Background:**

This gene encodes the receptor for urokinase plasminogen activator and; given its role in localizing and promoting plasmin formation; likely influences many normal and pathological processes related to cell-surface plasminogen activation and localized degradation of the extracellular matrix. It binds both the proprotein and mature forms of urokinase plasminogen activator and permits the activation of the receptor-bound pro-enzyme by plasmin. The protein lacks transmembrane or cytoplasmic domains and may be anchored to the plasma membrane by a glycosyl-phosphatidylinositol (GPI) moiety following cleavage of the nascent polypeptide near its carboxy-terminus. However; a soluble protein is also produced in some cell types. Alternative splicing results in multiple transcript variants encoding different isoforms. The proprotein experiences several post-translational cleavage reactions that have not yet been fully defined.

**Synonyms:**

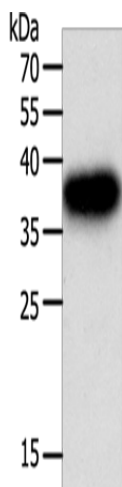
CD87; U-PAR; UPAR; URKR

**Protein Families:**

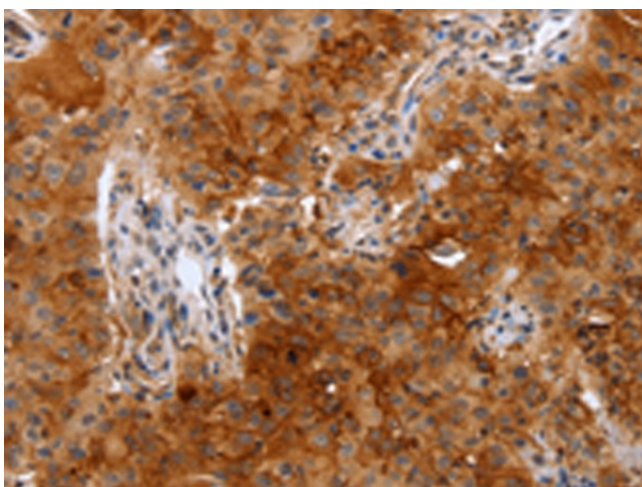
Druggable Genome, Secreted Protein

**Protein Pathways:**

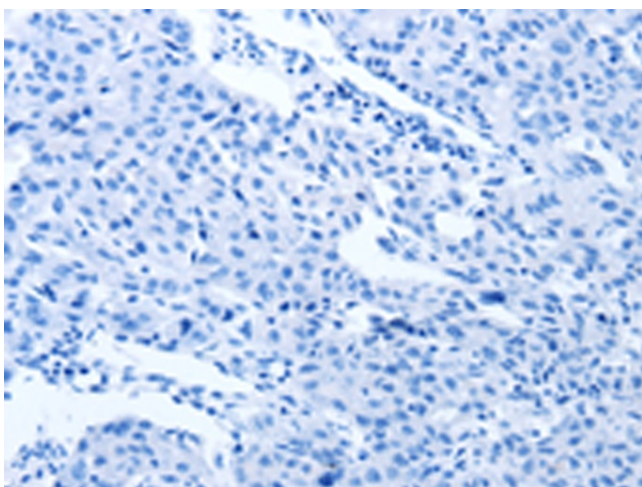
Complement and coagulation cascades

**Product images:**

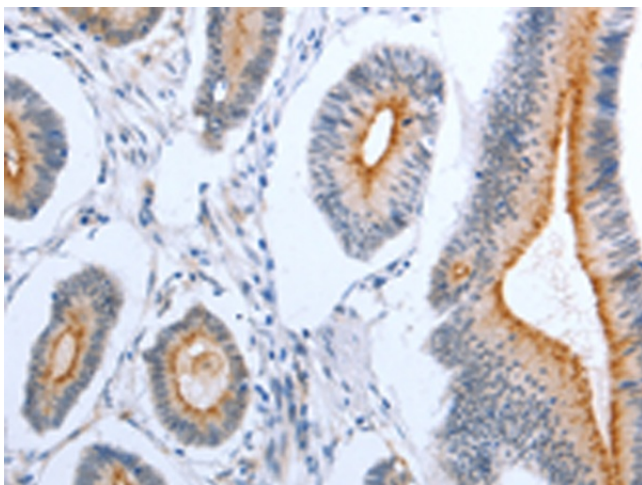
Gel: 10%SDS-PAGE  
Lysate: 40 µg  
Lane: A549 cells  
Primary antibody: TA323492 (PLAUR Antibody) at dilution 1/400  
Secondary antibody: Goat anti rabbit IgG at 1/8000 dilution  
Exposure time: 3 seconds



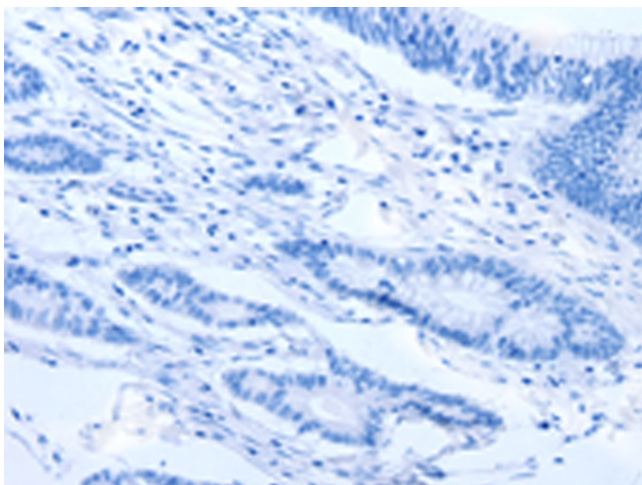
Immunohistochemistry of paraffin-embedded Human lung cancer tissue using TA323492 (PLAUR Antibody) at dilution 1/50 (Original magnification: x200)



Immunohistochemistry of paraffin-embedded Human lung cancer tissue using TA323492 (PLAUR Antibody) at dilution 1/50, treated with fusion protein. (Original magnification: x200)



Immunohistochemistry of paraffin-embedded Human colon cancer tissue using TA323492 (PLAUR Antibody) at dilution 1/50 (Original magnification: x200)



Immunohistochemistry of paraffin-embedded Human colon cancer tissue using TA323492 (PLAUR Antibody) at dilution 1/50, treated with fusion protein. (Original magnification: ×200)