

## Product datasheet for **TA323482**

### Sumo 1 (SUMO1) Rabbit Polyclonal Antibody

#### Product data:

Product Type:	Primary Antibodies
Applications:	IHC
Recommended Dilution:	IHC: 50-200 Positive control: Human ovarian cancer Predicted cell location: Nucleus, Cytoplasm
Reactivity:	Human, Mouse, Rat
Host:	Rabbit
Isotype:	IgG
Clonality:	Polyclonal
Immunogen:	Synthetic peptide corresponding to N terminal 15 amino acids of human SMT3 suppressor of mif two 3 homolog 1 ( <i>S. cerevisiae</i> )
Formulation:	PBS pH7.3, 0.05% NaN <sub>3</sub> , 50% glycerol
Concentration:	lot specific
Purification:	Antigen affinity purification
Conjugation:	Unconjugated
Storage:	Store at -20°C as received.
Stability:	Stable for 12 months from date of receipt.
Gene Name:	small ubiquitin-like modifier 1
Database Link:	<a href="#">NP_003343</a> <a href="#">Entrez Gene 22218 Mouse</a> <a href="#">Entrez Gene 301442 Rat</a> <a href="#">Entrez Gene 7341 Human</a> <a href="#">P63165</a>



[View online »](#)

**Background:**

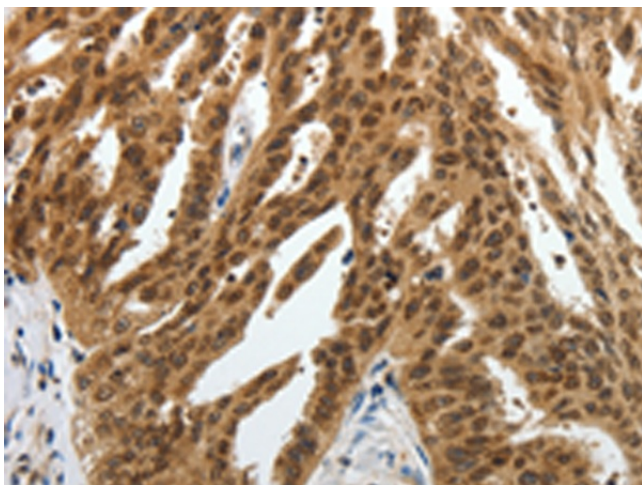
This gene encodes a protein that is a member of the SUMO (small ubiquitin-like modifier) protein family. It functions in a manner similar to ubiquitin in that it is bound to target proteins as part of a post-translational modification system. However; unlike ubiquitin which targets proteins for degradation; this protein is involved in a variety of cellular processes; such as nuclear transport; transcriptional regulation; apoptosis; and protein stability. It is not active until the last four amino acids of the carboxy-terminus have been cleaved off. Several pseudogenes have been reported for this gene. Alternate transcriptional splice variants encoding different isoforms have been characterized.

**Synonyms:**

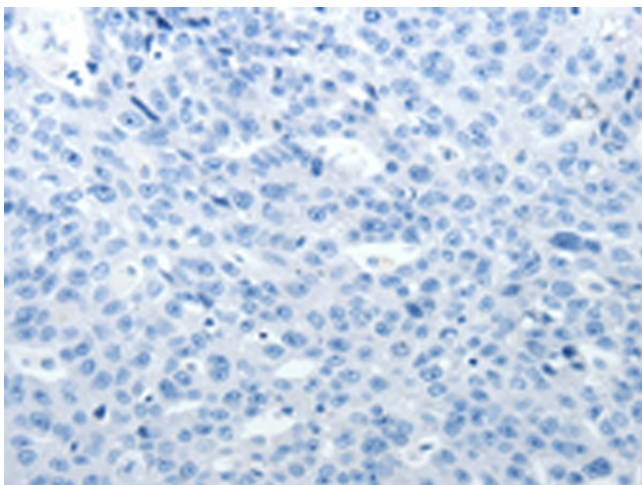
DAP1; GMP1; OFC10; PIC1; SENP2; SMT3; SMT3C; SMT3H3; UBL1

**Protein Families:**

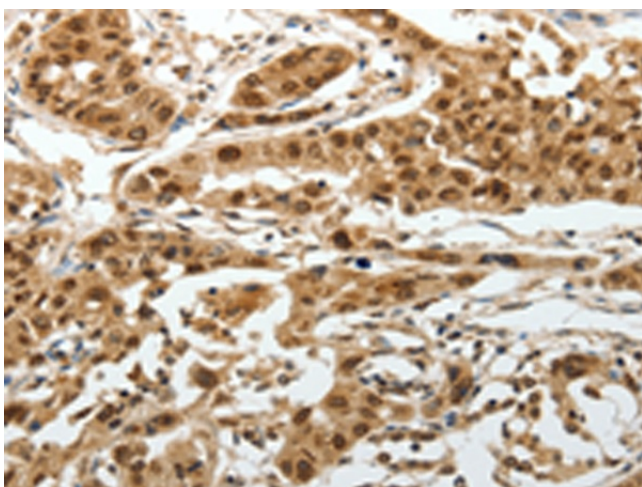
Druggable Genome, Stem cell - Pluripotency, Transcription Factors

**Product images:**

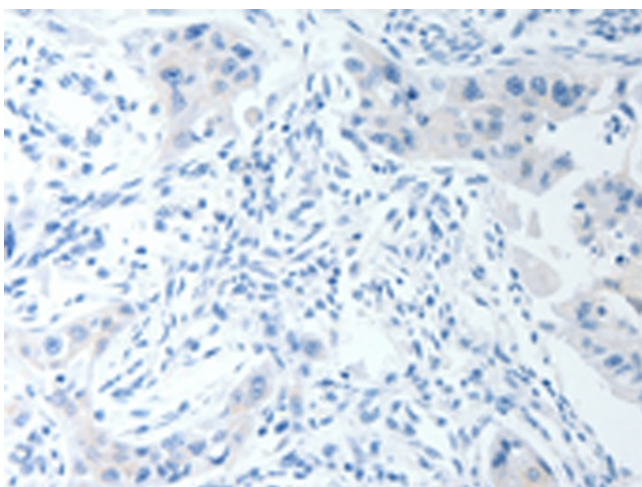
Immunohistochemistry of paraffin-embedded Human ovarian cancer tissue using TA323482 (SUMO1 Antibody) at dilution 1/30 (Original magnification:  $\times 200$ )



Immunohistochemistry of paraffin-embedded Human ovarian cancer tissue using TA323482 (SUMO1 Antibody) at dilution 1/30, treated with synthetic peptide. (Original magnification:  $\times 200$ )



Immunohistochemistry of paraffin-embedded Human lung cancer tissue using TA323482 (SUMO1 Antibody) at dilution 1/30 (Original magnification:  $\times 200$ )



Immunohistochemistry of paraffin-embedded Human lung cancer tissue using TA323482 (SUMO1 Antibody) at dilution 1/30, treated with synthetic peptide. (Original magnification:  $\times 200$ )