

Product datasheet for **TA323478S**

SPIN2B Rabbit Polyclonal Antibody

Product data:

| | |
|-------------------------|--|
| Product Type: | Primary Antibodies |
| Applications: | IHC, WB |
| Recommended Dilution: | WB: 500-2000 WB positive control: Hela cell lysate IHC: 50-200 Positive control: Human liver cancer Predicted cell location: Nucleus and Cytoplasm |
| Reactivity: | Human |
| Host: | Rabbit |
| Isotype: | IgG |
| Clonality: | Polyclonal |
| Immunogen: | Full length fusion protein |
| Formulation: | PBS pH7.3, 0.05% NaN ₃ , 50% glycerol |
| Purification: | Antigen affinity purification |
| Conjugation: | Unconjugated |
| Storage: | Store at -20°C as received. |
| Stability: | Stable for 12 months from date of receipt. |
| Predicted Protein Size: | 29 kDa |
| Gene Name: | spindlin family member 2B |
| Database Link: | NP_001006682 Entrez Gene 474343 Human Q9BPZ2 |



[View online »](#)

Background:

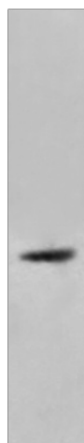
Human SPIN2 expressed by 2 IL3-dependent murine myeloid cell lines was moderately antiapoptotic following IL3 removal; but it was unable to block apoptosis induced by the chemotherapy agent doxorubicin. On the contrary; SPIN2-expressing cells were more sensitive to doxorubicin-mediated cell death. Also; SPIN2 did not combat the proapoptotic effects of Fas ligand stimulation in the Jurkat human T-cell line. Deletion of the C-terminal amino acids of SPIN2 diminished its antiapoptotic activity. In the murine myeloid cells; SPIN2 overexpression increased the cell number doubling times and slowed their rate of growth. There was also an increased percentage of cells in G2/M; which was more pronounced following IL3 withdrawal.

Synonyms:

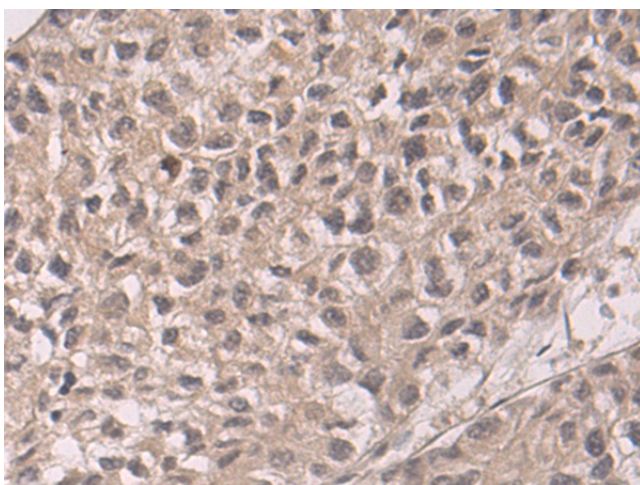
dj323P24.2; SPIN-2; SPIN-2B; SPIN2_duplicate; TDRD26

Product images:

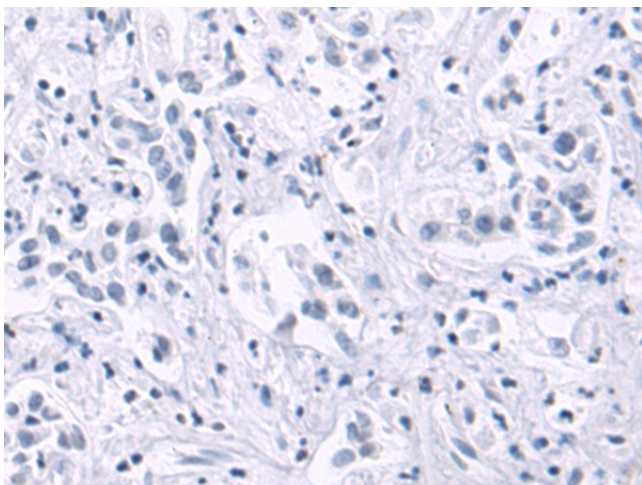
kDa
95—
72—
55—
36—
28—
17—
10—



Gel: 8%SDS-PAGE
Lysate: 40 µg
Lane: Hela cell lysate
Primary antibody: [TA323478] (SPIN2B Antibody)
at dilution 1/500
Secondary antibody: Goat anti rabbit IgG at
1/5000 dilution
Exposure time: 30 seconds



Immunohistochemistry of paraffin-embedded
Human liver cancer tissue using [TA323478]
(SPIN2B Antibody) at dilution 1/50 (Original
magnification: ×200)



Immunohistochemistry of paraffin-embedded Human liver cancer tissue using [TA323478] (SPIN2B Antibody) at dilution 1/50, treated with fusion protein. (Original magnification: ×200)