

## Product datasheet for **TA323478**

### SPIN2B Rabbit Polyclonal Antibody

#### Product data:

Product Type:	Primary Antibodies
Applications:	IHC, WB
Recommended Dilution:	WB: 500-2000 WB positive control: Hela cell lysate IHC: 50-200 Positive control: Human liver cancer Predicted cell location: Nucleus and Cytoplasm
Reactivity:	Human
Host:	Rabbit
Isotype:	IgG
Clonality:	Polyclonal
Immunogen:	Full length fusion protein
Formulation:	PBS pH7.3, 0.05% NaN <sub>3</sub> , 50% glycerol
Concentration:	lot specific
Purification:	Antigen affinity purification
Conjugation:	Unconjugated
Storage:	Store at -20°C as received.
Stability:	Stable for 12 months from date of receipt.
Predicted Protein Size:	29 kDa
Gene Name:	spindlin family member 2B
Database Link:	<a href="#">NP_001006682</a> <a href="#">Entrez Gene 474343 Human</a> <a href="#">Q9BPZ2</a>



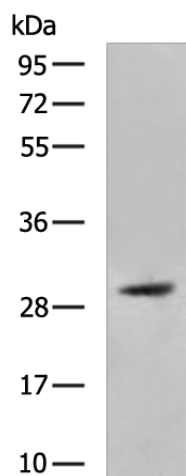
[View online »](#)

**Background:**

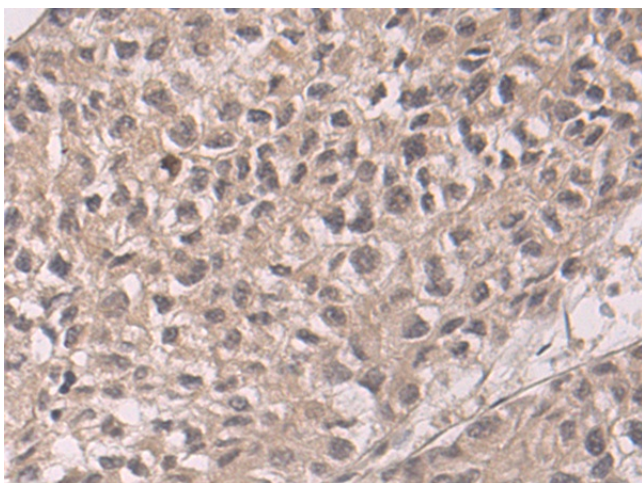
Human SPIN2 expressed by 2 IL3-dependent murine myeloid cell lines was moderately antiapoptotic following IL3 removal; but it was unable to block apoptosis induced by the chemotherapy agent doxorubicin. On the contrary; SPIN2-expressing cells were more sensitive to doxorubicin-mediated cell death. Also; SPIN2 did not combat the proapoptotic effects of Fas ligand stimulation in the Jurkat human T-cell line. Deletion of the C-terminal amino acids of SPIN2 diminished its antiapoptotic activity. In the murine myeloid cells; SPIN2 overexpression increased the cell number doubling times and slowed their rate of growth. There was also an increased percentage of cells in G2/M; which was more pronounced following IL3 withdrawal.

**Synonyms:**

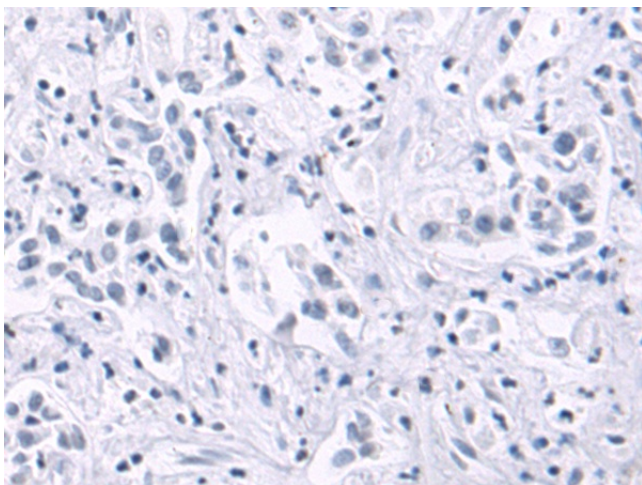
dj323P24.2; SPIN-2; SPIN-2B; SPIN2\_duplicate; TDRD26

**Product images:**

Gel: 8%SDS-PAGE  
Lysate: 40 µg  
Lane: HeLa cell lysate  
Primary antibody: TA323478 (SPIN2B Antibody) at dilution 1/500  
Secondary antibody: Goat anti rabbit IgG at 1/5000 dilution  
Exposure time: 30 seconds



Immunohistochemistry of paraffin-embedded Human liver cancer tissue using TA323478 (SPIN2B Antibody) at dilution 1/50 (Original magnification: ×200)



Immunohistochemistry of paraffin-embedded Human liver cancer tissue using TA323478 (SPIN2B Antibody) at dilution 1/50, treated with fusion protein. (Original magnification:  $\times 200$ )