

## Product datasheet for **TA323475**

### RSK1 p90 (RPS6KA1) Rabbit Polyclonal Antibody

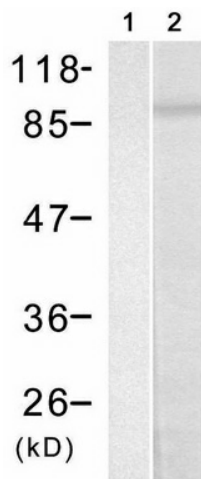
#### Product data:

Product Type:	Primary Antibodies
Applications:	WB
Recommended Dilution:	WB: 1:500-1000
Reactivity:	Human
Modifications:	Phospho-specific
Host:	Rabbit
Isotype:	IgG
Clonality:	Polyclonal
Immunogen:	Peptide sequence around phosphorylation site of serine 352 (R-D-S(p)-P-G) derived from Human RPS6KA1.
Formulation:	PBS pH7.3, 0.05% NaN <sub>3</sub> , 50% glycerol
Concentration:	lot specific
Purification:	Antigen affinity purification
Conjugation:	Unconjugated
Storage:	Store at -20°C as received.
Stability:	Stable for 12 months from date of receipt.
Predicted Protein Size:	90 kDa
Gene Name:	ribosomal protein S6 kinase A1
Database Link:	<a href="#">NP_002944</a> <a href="#">Entrez Gene 6195 Human</a> <a href="#">Q15418</a>
Background:	This gene encodes a member of the RSK (ribosomal S6 kinase) family of serine/threonine kinases. This kinase contains 2 nonidentical kinase catalytic domains and phosphorylates various substrates, including members of the mitogen-activated kinase (MAPK) signalling pathway. The activity of this protein has been implicated in controlling cell growth and differentiation. Alternate transcriptional splice variants, encoding different isoforms, have been characterized. Serine/threonine kinase that may play a role in mediating the growth-factor and stress induced activation of the transcription factor CREB.



[View online »](#)

<b>Synonyms:</b>	HU-1; MAPKAPK1A; p90Rsk; RSK; RSK1
<b>Protein Families:</b>	Druggable Genome, Protein Kinase
<b>Protein Pathways:</b>	Long-term potentiation, MAPK signaling pathway, mTOR signaling pathway, Neurotrophin signaling pathway, Oocyte meiosis, Progesterone-mediated oocyte maturation

**Product images:**

Predicted band size: 90 kDa. Positive control: HUVEC cells lysate. Recommended dilution: 1/500-1000. (Gel: 8%SDS-PAGE Lane 1: Treated with the peptide Lane 2: HUVEC cells lysate Lysates: 30 ug per lane Primary antibody: 1/500 dilution Secondary antibody: Goat anti Rabbit IgG - H&L (HRP) at 1/10000 dilution Exposure time: 1 minute)