

Product datasheet for **TA323474**

RSK1 p90 (RPS6KA1) Rabbit Polyclonal Antibody

Product data:

Product Type:	Primary Antibodies
Applications:	IF, IHC, WB
Recommended Dilution:	WB: 1:500-1000, IHC: 1:50-100, IF: 1:100-200
Reactivity:	Human, Mouse, Rat
Modifications:	Phospho-specific
Host:	Rabbit
Isotype:	IgG
Clonality:	Polyclonal
Immunogen:	Peptide sequence around phosphorylation site of threonine 348 (S-R-T(p)-P-R) derived from Human RPS6KA1.
Formulation:	PBS pH7.3, 0.05% NaN ₃ , 50% glycerol
Concentration:	lot specific
Purification:	Antigen affinity purification
Conjugation:	Unconjugated
Storage:	Store at -20°C as received.
Stability:	Stable for 12 months from date of receipt.
Predicted Protein Size:	90 kDa
Gene Name:	ribosomal protein S6 kinase A1
Database Link:	NP_002944 Entrez Gene 20111 Mouse Entrez Gene 81771 Rat Entrez Gene 6195 Human Q15418

Background: This gene encodes a member of the RSK (ribosomal S6 kinase) family of serine/threonine kinases. This kinase contains 2 nonidentical kinase catalytic domains and phosphorylates various substrates, including members of the mitogen-activated kinase (MAPK) signalling pathway. The activity of this protein has been implicated in controlling cell growth and differentiation. Alternate transcriptional splice variants, encoding different isoforms, have been characterized. Serine/threonine kinase that may play a role in mediating the growth-factor and stress induced activation of the transcription factor CREB.



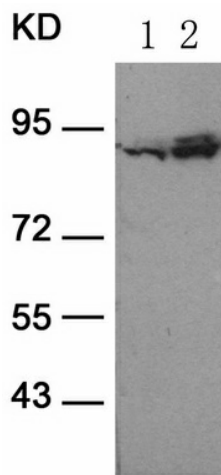
[View online »](#)

Synonyms: HU-1; MAPKAPK1A; p90Rsk; RSK; RSK1

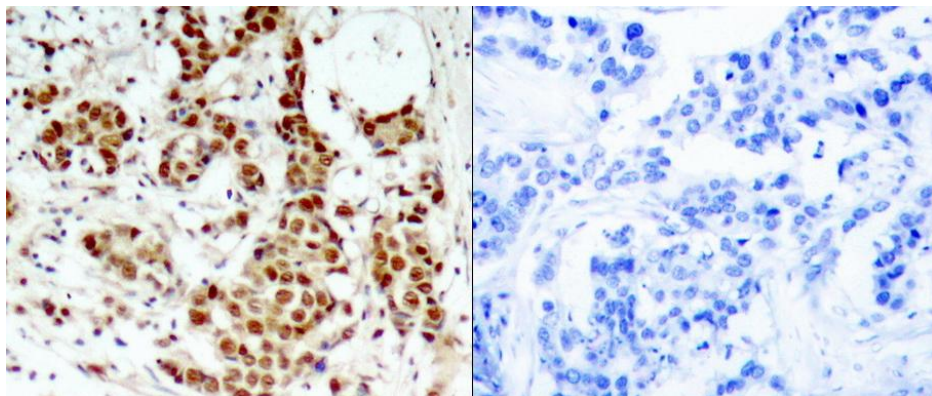
Protein Families: Druggable Genome, Protein Kinase

Protein Pathways: Long-term potentiation, MAPK signaling pathway, mTOR signaling pathway, Neurotrophin signaling pathway, Oocyte meiosis, Progesterone-mediated oocyte maturation

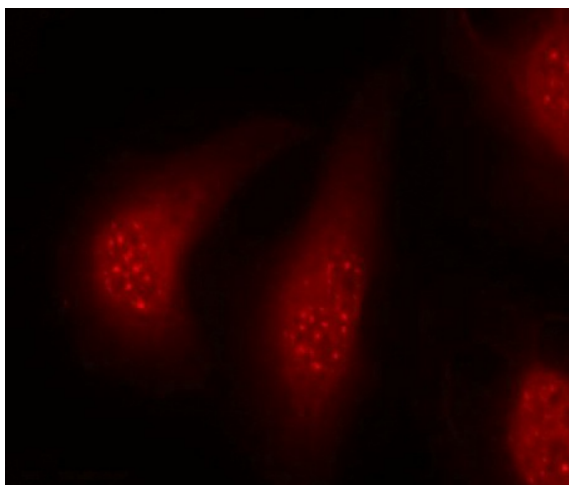
Product images:



Predicted band size: 90 kDa. Positive control: HeLa cells untreated or treated with UV lysate. Recommended dilution: 1/ 500-1000. (Gel: 8%SDS-PAGE Lane 1: HeLa cells untreated with UV Lane 2: HeLa cells treated with UV Lysates: 30 ug per lane Primary antibody: 1/500 dilution Secondary antibody: Goat anti Rabbit IgG - H&L (HRP) at 1/10000 dilution Exposure time: 1 minute)



Predicted cell location: Nucleus; Cytoplasm. Positive control: Human breast carcinoma tissue. Recommended dilution: 1/ 50-100 The image on the left is immunohistochemistry of paraffin-embedded human breast carcinoma tissue using RPS6KA1 (Phospho-Thr348) antibody at dilution 1/50, on the right is treated with the synthetic peptide. (Original magnification:x200)



Predicted cell location: Nucleus; Cytoplasm.
Positive control: HeLa cells. Recommended dilution: 1/ 100-200. The image is immunofluorescence of methanol-fixed HeLa cells using RPS6KA1 (Phospho-Thr348) antibody at dilution 1/100. (Original magnification:×200)