

## Product datasheet for **TA323473S**

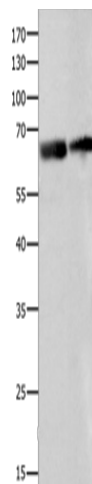
### IGF2BP2 Rabbit Polyclonal Antibody

#### Product data:

Product Type:	Primary Antibodies
Applications:	WB
Recommended Dilution:	WB: 200-1000 WB positive control: Human liver and ovarian cancer tissue
Reactivity:	Human, Mouse
Host:	Rabbit
Isotype:	IgG
Clonality:	Polyclonal
Immunogen:	Fusion protein corresponding to a region derived from 65-169 amino acids of human insulin-like growth factor 2 mRNA binding protein 2
Formulation:	PBS pH7.3, 0.05% NaN <sub>3</sub> , 50% glycerol
Purification:	Antigen affinity purification
Conjugation:	Unconjugated
Storage:	Store at -20°C as received.
Stability:	Stable for 12 months from date of receipt.
Predicted Protein Size:	66 kDa
Gene Name:	insulin like growth factor 2 mRNA binding protein 2
Database Link:	<a href="#">NP_001007226</a> <a href="#">Entrez Gene 319765 Mouse</a> <a href="#">Entrez Gene 10644 Human</a> <a href="#">Q9Y6M1</a>
Background:	This gene encodes a member of the IGF-II mRNA-binding protein (IMP) family. The protein encoded by this gene contains several four KH domains and two RRM domains. It functions by binding to the 5' UTR of the insulin-like growth factor 2 (IGF2) mRNA and regulating IGF2 translation. Alternate transcriptional splice variants; encoding different isoforms; have been characterized.? May regulate translation of target mRNAs.
Synonyms:	IMP-2; IMP2; VICKZ2



[View online »](#)

**Product images:**

Gel: 8%SDS-PAGE  
Lysate: 40  $\mu$ g  
Lane 1-2: Human liver tissue  
Human ovarian cancer tissue  
Primary antibody: [TA323473] (IGF2BP2 Antibody)  
at dilution 1/300  
Secondary antibody: Goat anti rabbit IgG at  
1/8000 dilution  
Exposure time: 2 minutes