

Product datasheet for **TA323472S**

IGF2BP2 Rabbit Polyclonal Antibody

Product data:

Product Type:	Primary Antibodies
Applications:	IHC, WB
Recommended Dilution:	WB: 200-1000 WB positive control: Jurkat cells IHC: 20-100 Positive control: Human esophagus cancer Predicted cell location: Cytoplasm
Reactivity:	Human, Mouse
Host:	Rabbit
Isotype:	IgG
Clonality:	Polyclonal
Immunogen:	Fusion protein corresponding to a region derived from 65-169 amino acids of human insulin-like growth factor 2 mRNA binding protein 2
Formulation:	PBS pH7.3, 0.05% NaN ₃ , 50% glycerol
Purification:	Antigen affinity purification
Conjugation:	Unconjugated
Storage:	Store at -20°C as received.
Stability:	Stable for 12 months from date of receipt.
Predicted Protein Size:	66 kDa
Gene Name:	insulin like growth factor 2 mRNA binding protein 2
Database Link:	NP_001007226 Entrez Gene 319765 Mouse Entrez Gene 10644 Human Q9Y6M1

Background: This gene encodes a member of the IGF-II mRNA-binding protein (IMP) family. The protein encoded by this gene contains several four KH domains and two RRM domains. It functions by binding to the 5' UTR of the insulin-like growth factor 2 (IGF2) mRNA and regulating IGF2 translation. Alternate transcriptional splice variants; encoding different isoforms; have been characterized.? May regulate translation of target mRNAs.



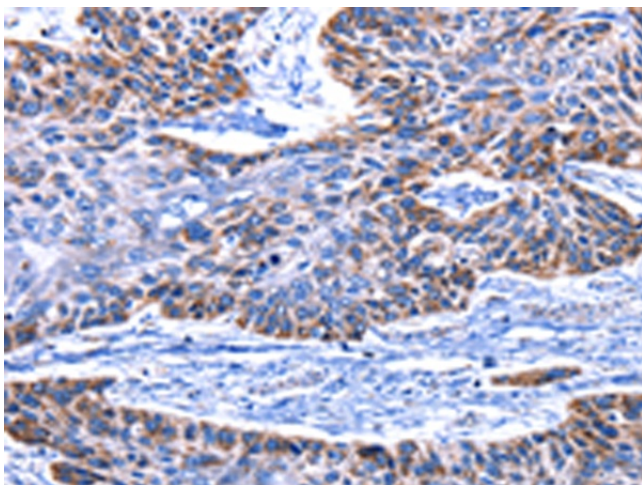
[View online »](#)

Synonyms: IMP-2; IMP2; VICKZ2

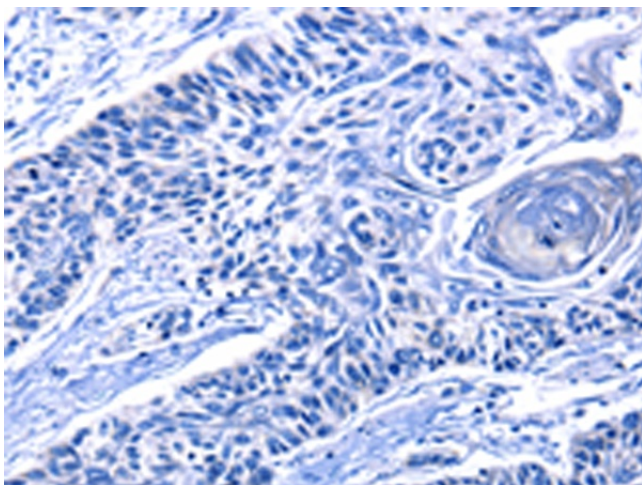
Product images:



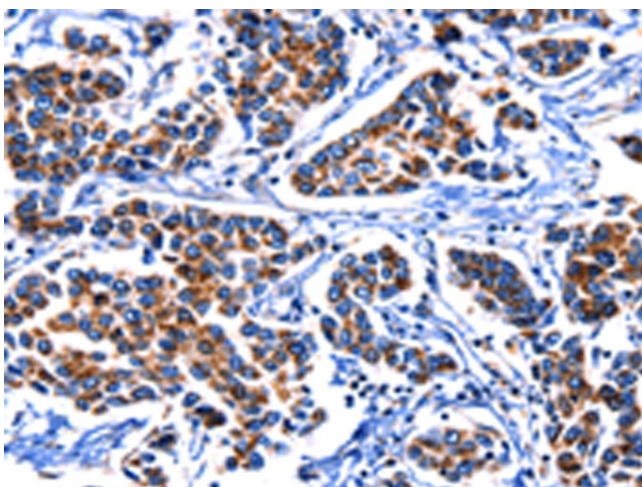
Gel: 8%SDS-PAGE
Lysate: 40 µg
Lane: Jurkat cells
Primary antibody: [TA323472] (IGF2BP2 Antibody) at dilution 1/300
Secondary antibody: Goat anti rabbit IgG at 1/8000 dilution
Exposure time: 40 seconds



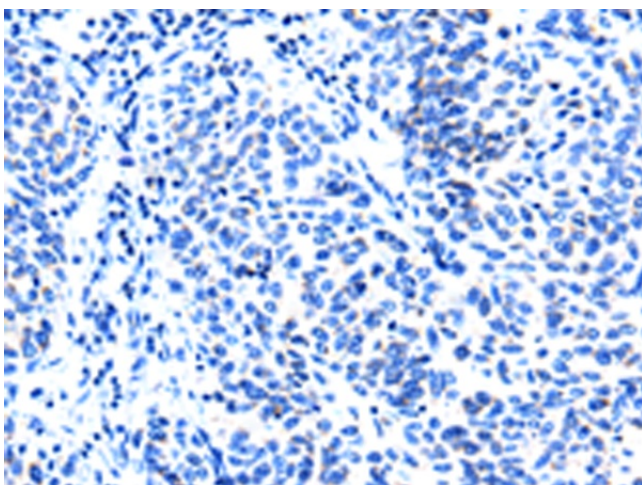
Immunohistochemistry of paraffin-embedded Human esophagus cancer tissue using [TA323472] (IGF2BP2 Antibody) at dilution 1/15 (Original magnification: ×200)



Immunohistochemistry of paraffin-embedded Human esophagus cancer tissue using [TA323472] (IGF2BP2 Antibody) at dilution 1/15, treated with fusion protein. (Original magnification: ×200)



Immunohistochemistry of paraffin-embedded Human breast cancer tissue using [TA323472] (IGF2BP2 Antibody) at dilution 1/15 (Original magnification: ×200)



Immunohistochemistry of paraffin-embedded Human breast cancer tissue using [TA323472] (IGF2BP2 Antibody) at dilution 1/15, treated with fusion protein. (Original magnification: ×200)