

Product datasheet for **TA323467**

PPP1A (PPP1CA) Rabbit Polyclonal Antibody

Product data:

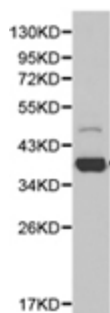
Product Type:	Primary Antibodies
Applications:	WB
Recommended Dilution:	WB: 1:500-2000
Reactivity:	Human, Mouse, Rat
Host:	Rabbit
Isotype:	IgG
Clonality:	Polyclonal
Immunogen:	Full length fusion protein
Formulation:	PBS pH7.3, 0.05% NaN ₃ , 50% glycerol
Concentration:	lot specific
Purification:	Antigen affinity purification
Conjugation:	Unconjugated
Storage:	Store at -20°C as received.
Stability:	Stable for 12 months from date of receipt.
Predicted Protein Size:	38 kDa
Gene Name:	protein phosphatase 1 catalytic subunit alpha
Database Link:	NP_001008709 Entrez Gene 19045 MouseEntrez Gene 24668 RatEntrez Gene 5499 Human P62136
Background:	Type 1 protein phosphatase (PP1), a serine/threonine phosphatase, is highly conserved in eukaryotic cells. Four isoforms of PP1 have been characterized: PP1a, PP1d, PP1?1 and PP1?2. Involvement in cell cycle regulation is one of the biological functions of PP1. It has been illustrated that PP1 dephosphorylates Rb and cdc25 during mitosis. A cell cycle-dependent phosphorylation at Thr320 of PP1a by cdc2 kinase inhibits PP1a activity.
Synonyms:	PP-1A; PP1A; PP1alpha; PPP1A
Protein Families:	Druggable Genome, Phosphatase



[View online »](#)

Protein Pathways: Focal adhesion, Insulin signaling pathway, Long-term potentiation, Oocyte meiosis, Regulation of actin cytoskeleton, Vascular smooth muscle contraction

Product images:



Predicted band size: 38 kDa. Positive control: HeLa cell lysate. Recommended dilution: 1/500-2000. (Gel: 10%SDS-PAGE Lysate: 40 ug Primary antibody: 1/500 dilution Secondary antibody: Goat anti Rabbit IgG - H&L (HRP) at 1/10000 dilution Exposure time: 1 minute)