

## Product datasheet for **TA323465**

### **BIRC5 Rabbit Polyclonal Antibody**

#### **Product data:**

|                         |   |
|-------------------------|---|
| Product Type:           | Primary Antibodies  |
| Applications:           | IHC, WB   |
| Recommended Dilution:   | WB: 500-2000<br>WB positive control: A431, Jurkat and hela cells<br>IHC: 25-100<br>Positive control: Human colon cancer<br>Predicted cell location: Cytoplasm                 |
| Reactivity:             | Human, Mouse, Rat   |
| Host:                   | Rabbit  |
| Isotype:                | IgG   |
| Clonality:              | Polyclonal  |
| Immunogen:              | Full length fusion protein  |
| Formulation:            | PBS pH7.3, 0.05% NaN <sub>3</sub> , 50% glycerol  |
| Concentration:          | lot specific  |
| Purification:           | Antigen affinity purification   |
| Conjugation:            | Unconjugated  |
| Storage:                | Store at -20°C as received.   |
| Stability:              | Stable for 12 months from date of receipt.  |
| Predicted Protein Size: | 16 kDa  |
| Gene Name:              | baculoviral IAP repeat containing 5   |
| Database Link:          | <a href="#">NP_001012270</a><br><a href="#">Entrez Gene 11799 Mouse</a> <a href="#">Entrez Gene 64041 Rat</a> <a href="#">Entrez Gene 332 Human</a><br><a href="#">O15392</a> |



[View online »](#)

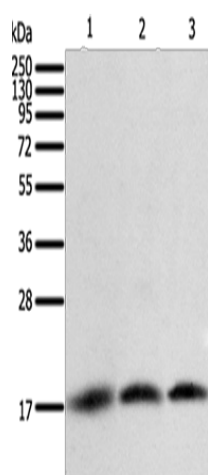
**Background:** This gene is a member of the inhibitor of apoptosis (IAP) gene family, which encode negative regulatory proteins that prevent apoptotic cell death. IAP family members usually contain multiple baculovirus IAP repeat (BIR) domains, but this gene encodes proteins with only a single BIR domain. The encoded proteins also lack a C-terminus RING finger domain. Gene expression is high during fetal development and in most tumors, yet low in adult tissues. Alternatively spliced transcript variants encoding distinct isoforms have been found for this gene.

**Synonyms:** API4; EPR-1

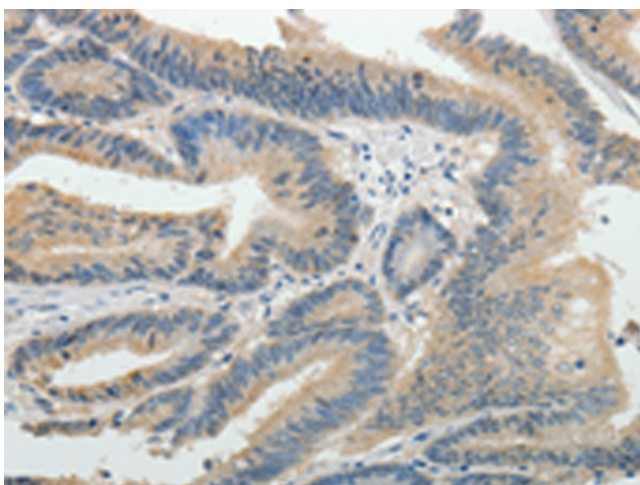
**Protein Families:** Druggable Genome, Stem cell - Pluripotency

**Protein Pathways:** Colorectal cancer, Pathways in cancer

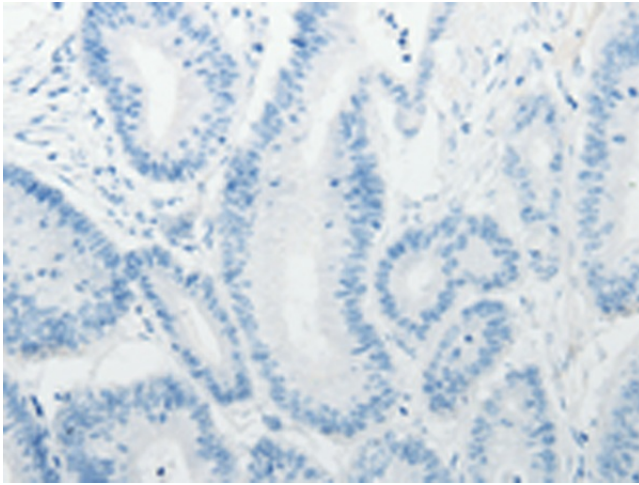
### Product images:



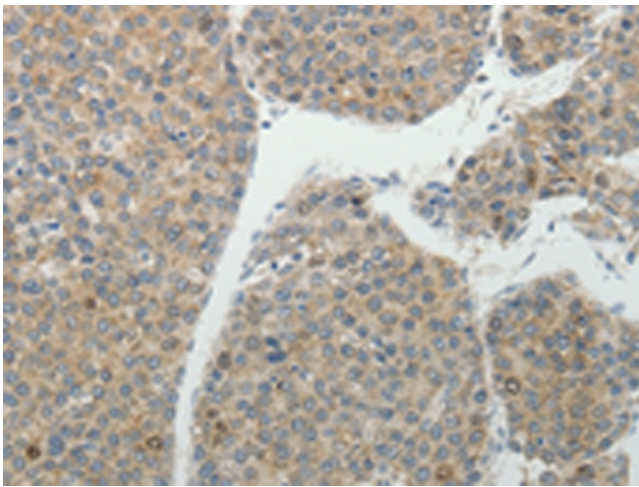
Gel: 12%SDS-PAGE  
Lysate: 40 µg  
Lane 1-3: A431 cells  
Jurkat cells  
hela cells  
Primary antibody: TA323465 (BIRC5 Antibody) at dilution 1/400  
Secondary antibody: Goat anti rabbit IgG at 1/8000 dilution  
Exposure time: 5 seconds



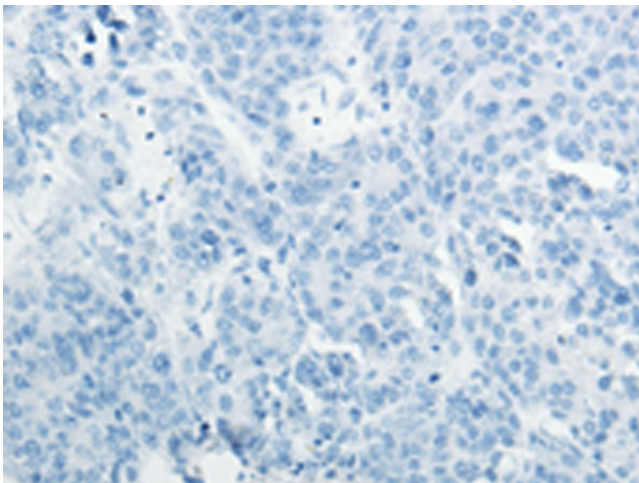
Immunohistochemistry of paraffin-embedded Human colon cancer tissue using TA323465 (BIRC5 Antibody) at dilution 1/25 (Original magnification: ×200)



Immunohistochemistry of paraffin-embedded Human colon cancer tissue using TA323465 (BIRC5 Antibody) at dilution 1/25, treated with fusion protein. (Original magnification: ×200)



Immunohistochemistry of paraffin-embedded Human liver cancer tissue using TA323465 (BIRC5 Antibody) at dilution 1/25 (Original magnification: ×200)



Immunohistochemistry of paraffin-embedded Human liver cancer tissue using TA323465 (BIRC5 Antibody) at dilution 1/25, treated with fusion protein. (Original magnification: ×200)