

Product datasheet for **TA323459**

Zyxin (ZYX) Rabbit Polyclonal Antibody

Product data:

Product Type:	Primary Antibodies
Applications:	WB
Recommended Dilution:	WB: 1:500-2000
Reactivity:	Human, Mouse, Rat
Host:	Rabbit
Isotype:	IgG
Clonality:	Polyclonal
Immunogen:	Fusion protein corresponding to N terminal 300 amino acids of human zyxin
Formulation:	PBS pH7.3, 0.05% NaN ₃ , 50% glycerol
Concentration:	lot specific
Purification:	Antigen affinity purification
Conjugation:	Unconjugated
Storage:	Store at -20°C as received.
Stability:	Stable for 12 months from date of receipt.
Predicted Protein Size:	80 kDa
Gene Name:	zyxin
Database Link:	NP_001010972 Entrez Gene 22793 MouseEntrez Gene 114636 RatEntrez Gene 7791 Human Q15942

Background: The zyxin family of proteins includes LIMD1, ajuba, trip6 and zyxin, each of which contains three LIM domains at the carboxy-terminus. Zyxin family members associate with the actin cytoskeleton and are components of both the cell-cell junction adhesive complex and the integrin-mediated adhesive complex. They shuttle in and out of the nucleus where they may function in transcriptional activation. Zyxin is involved in the regulation of mechanical force-induced actin polymerization at focal adhesions, and in regulation of adhesion and migration, possibly through recruitment of Ena/VASP proteins to focal adhesions. Zyxin interacts with and may regulate the function of the tumor suppressor myopodin, which inhibits tumor growth and metastasis.

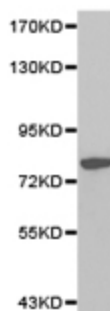


[View online »](#)

Synonyms: ESP-2; HED-2

Protein Pathways: Focal adhesion

Product images:



Predicted band size: 80 kDa. Positive control: HeLa cell lysate. Recommended dilution: 1/500-2000. (Gel: 8%SDS-PAGE Lysate: 40 ug Primary antibody: 1/500 dilution Secondary antibody: Goat anti Rabbit IgG - H&L (HRP) at 1/10000 dilution Exposure time: 1 minute)