

## Product datasheet for **TA323457S**

### RAP1B Rabbit Polyclonal Antibody

#### Product data:

Product Type:	Primary Antibodies
Applications:	IHC, WB
Recommended Dilution:	WB: 200-1000 WB positive control: HepG2 cells and Human cervical cancer tissue IHC: 50-200 Positive control: Human thyroid cancer Predicted cell location: Cytoplasm
Reactivity:	Human, Mouse, Rat
Host:	Rabbit
Isotype:	IgG
Clonality:	Polyclonal
Immunogen:	Full length fusion protein
Formulation:	PBS pH7.3, 0.05% NaN <sub>3</sub> , 50% glycerol
Purification:	Antigen affinity purification
Conjugation:	Unconjugated
Storage:	Store at -20°C as received.
Stability:	Stable for 12 months from date of receipt.
Predicted Protein Size:	21 kDa
Gene Name:	RAP1B, member of RAS oncogene family
Database Link:	<a href="#">NP_001010942</a> <a href="#">Entrez Gene 171337 RatEntrez Gene 215449 MouseEntrez Gene 5908 Human P61224</a>

**Background:** This gene encodes a member of the RAS-like small GTP-binding protein superfamily. Members of this family regulate multiple cellular processes including cell adhesion and growth and differentiation. This protein localizes to cellular membranes and has been shown to regulate integrin-mediated cell signaling. This protein also plays a role in regulating outside-in signaling in platelets. Alternate splicing results in multiple transcript variants. Pseudogenes of this gene are found on chromosomes 3; 5; 6 and 9.



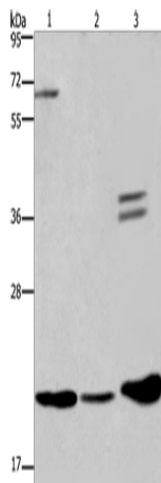
[View online »](#)

**Synonyms:** K-REV; RAL1B

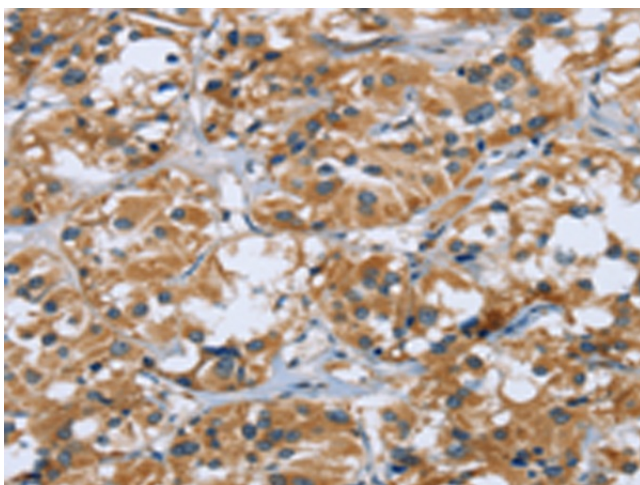
**Protein Families:** Druggable Genome

**Protein Pathways:** Chemokine signaling pathway, Focal adhesion, Leukocyte transendothelial migration, Long-term potentiation, MAPK signaling pathway, Neurotrophin signaling pathway, Renal cell carcinoma

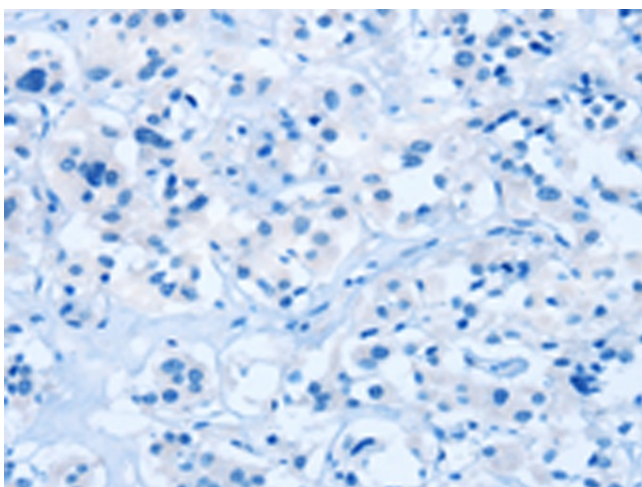
### Product images:



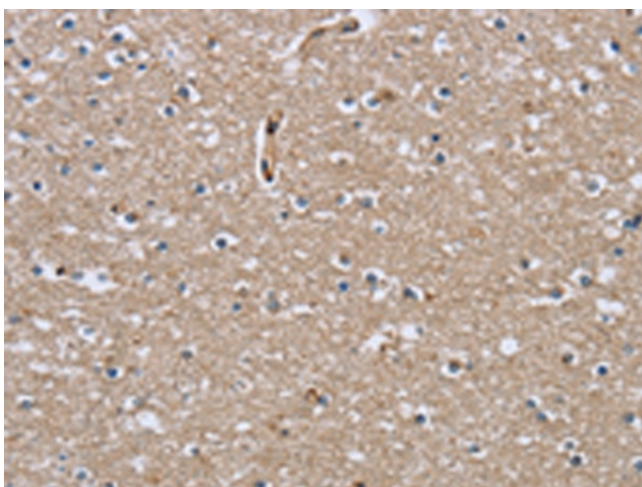
Gel: 10%SDS-PAGE  
Lysate: 24  $\mu$ g  
Lane 1-2: HepG2 cells  
Human cervical cancer tissue  
Primary antibody: [TA323457] (RAP1B Antibody)  
at dilution 1/400  
Secondary antibody: Goat anti rabbit IgG at  
1/8000 dilution  
Exposure time: 1 minute



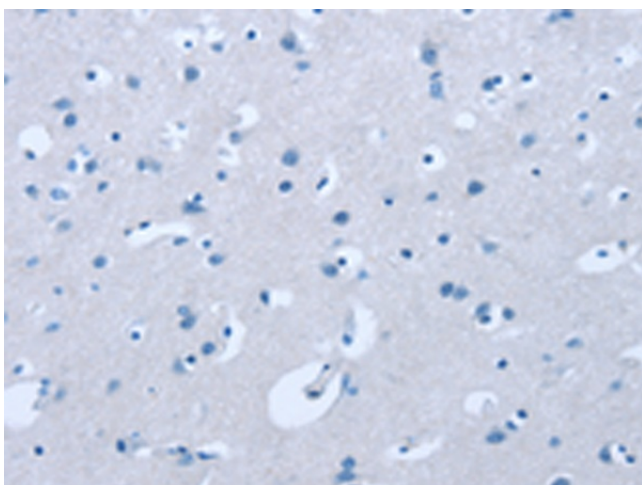
Immunohistochemistry of paraffin-embedded  
Human thyroid cancer tissue using [TA323457]  
(RAP1B Antibody) at dilution 1/40 (Original  
magnification:  $\times$ 200)



Immunohistochemistry of paraffin-embedded Human thyroid cancer tissue using [TA323457] (RAP1B Antibody) at dilution 1/40, treated with fusion protein. (Original magnification: ×200)



Immunohistochemistry of paraffin-embedded Human brain tissue using [TA323457] (RAP1B Antibody) at dilution 1/40 (Original magnification: ×200)



Immunohistochemistry of paraffin-embedded Human brain tissue using [TA323457] (RAP1B Antibody) at dilution 1/40, treated with fusion protein. (Original magnification: ×200)