

## Product datasheet for **TA323455**

### RAP1A Rabbit Polyclonal Antibody

#### Product data:

Product Type:	Primary Antibodies
Applications:	IHC, WB
Recommended Dilution:	WB: 500-2000 WB positive control: Mouse brain tissue and A431 cell IHC: 50-200 Positive control: Human gastric cancer Predicted cell location: Cytoplasm
Reactivity:	Human, Mouse, Rat
Host:	Rabbit
Isotype:	IgG
Clonality:	Polyclonal
Immunogen:	Full length fusion protein
Formulation:	PBS pH7.3, 0.05% NaN <sub>3</sub> , 50% glycerol
Concentration:	lot specific
Purification:	Antigen affinity purification
Conjugation:	Unconjugated
Storage:	Store at -20°C as received.
Stability:	Stable for 12 months from date of receipt.
Gene Name:	RAP1A, member of RAS oncogene family
Database Link:	<a href="#">NP_002875</a> <a href="#">Entrez Gene 109905</a> <a href="#">MouseEntrez Gene 295347</a> <a href="#">RatEntrez Gene 5906</a> <a href="#">Human P62834</a>



[View online »](#)

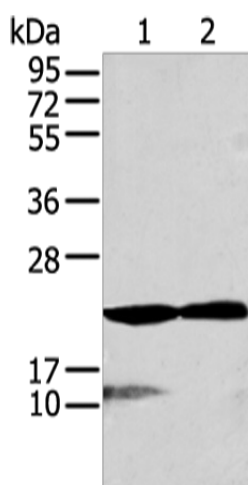
**Background:** The product of this gene belongs to the family of RAS-related proteins. These proteins share approximately 50% amino acid identity with the classical RAS proteins and have numerous structural features in common. The most striking difference between RAP proteins and RAS proteins resides in their 61st amino acid: glutamine in RAS is replaced by threonine in RAP proteins. The product of this gene counteracts the mitogenic function of RAS because it can interact with RAS GAPs and RAF in a competitive manner. Two transcript variants encoding the same protein have been identified for this gene.?

**Synonyms:** C21KG; G-22K; KREV-1; KREV1; RAP1; SMGP21

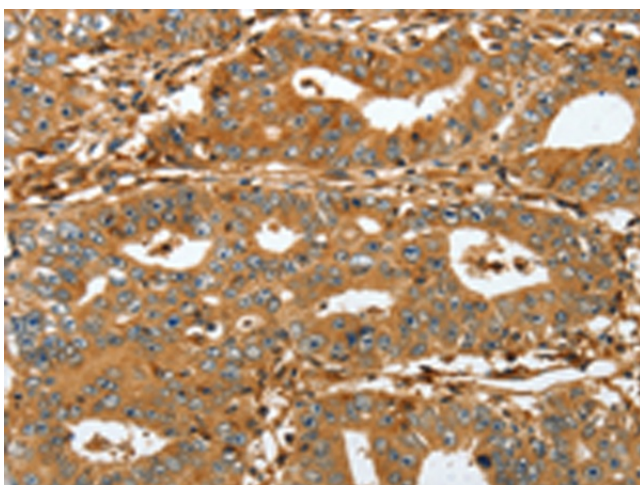
**Protein Families:** Druggable Genome

**Protein Pathways:** Chemokine signaling pathway, Focal adhesion, Leukocyte transendothelial migration, Long-term potentiation, MAPK signaling pathway, Neurotrophin signaling pathway, Renal cell carcinoma

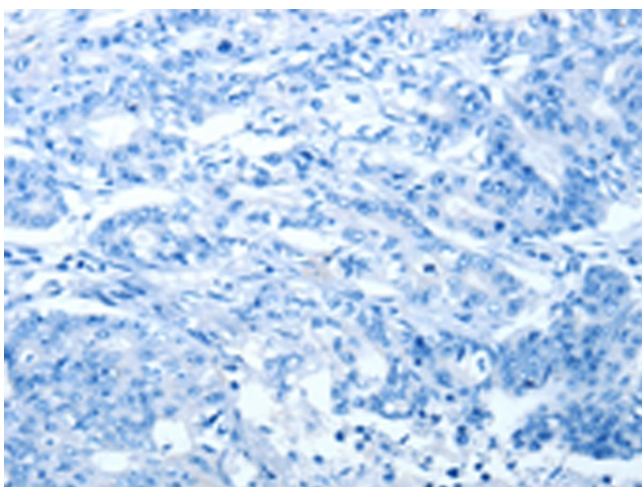
### Product images:



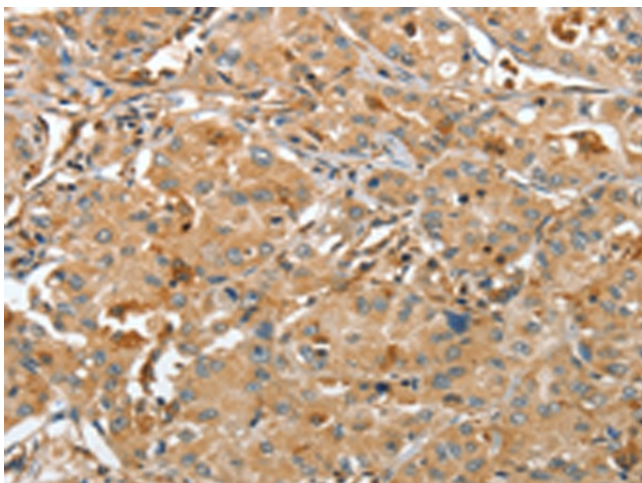
Gel: 12%SDS-PAGE  
Lysate: 40  $\mu$ g  
Lane 1-2: Mouse brain tissue and A431 cell  
Primary antibody: TA323455 (RAP1A Antibody) at dilution 1/200  
Secondary antibody: Goat anti rabbit IgG at 1/8000 dilution  
Exposure time: 10 seconds



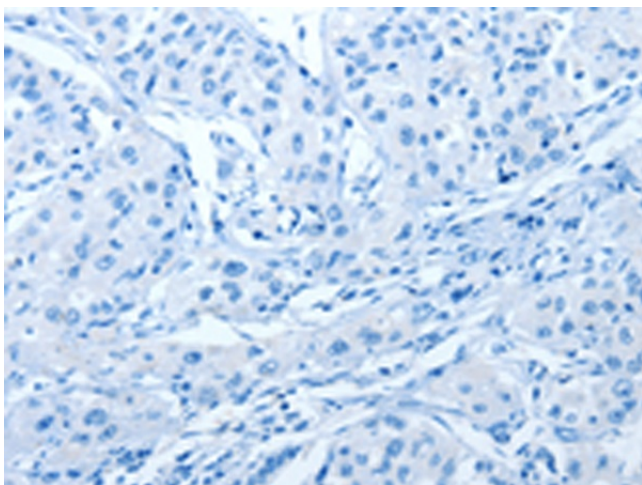
Immunohistochemistry of paraffin-embedded Human gastric cancer tissue using TA323455 (RAP1A Antibody) at dilution 1/45 (Original magnification:  $\times$ 200)



Immunohistochemistry of paraffin-embedded Human gastric cancer tissue using TA323455 (RAP1A Antibody) at dilution 1/45, treated with fusion protein. (Original magnification: ×200)



Immunohistochemistry of paraffin-embedded Human lung cancer tissue using TA323455 (RAP1A Antibody) at dilution 1/45 (Original magnification: ×200)



Immunohistochemistry of paraffin-embedded Human lung cancer tissue using TA323455 (RAP1A Antibody) at dilution 1/45, treated with fusion protein. (Original magnification:  $\times 200$ )