

Product datasheet for **TA323448**

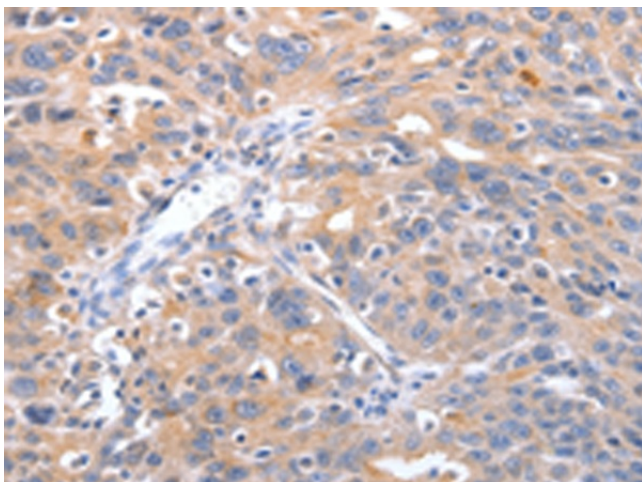
Pirh2 (RCHY1) Rabbit Polyclonal Antibody

Product data:

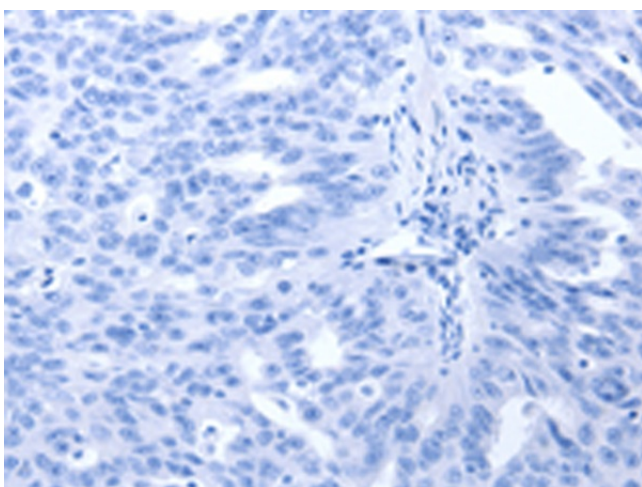
Product Type:	Primary Antibodies
Applications:	IHC
Recommended Dilution:	IHC: 25-100 Positive control: Human ovarian cancer Predicted cell location: Cytoplasm
Reactivity:	Human, Mouse
Host:	Rabbit
Isotype:	IgG
Clonality:	Polyclonal
Immunogen:	Full length fusion protein
Formulation:	PBS pH7.3, 0.05% NaN ₃ , 50% glycerol
Concentration:	lot specific
Purification:	Antigen affinity purification
Conjugation:	Unconjugated
Storage:	Store at -20°C as received.
Stability:	Stable for 12 months from date of receipt.
Gene Name:	ring finger and CHY zinc finger domain containing 1
Database Link:	NP_056251 Entrez Gene 68098 Mouse Entrez Gene 25898 Human Q96PM5
Background:	The protein encoded by this gene has ubiquitin ligase activity. It mediates E3-dependent ubiquitination and proteasomal degradation of target proteins; including TP53; HDAC1 and CDKN1B; thus regulating their levels and cell cycle progression. Alternatively spliced transcript variants encoding different isoforms have been described for this gene.
Synonyms:	ARNIP; CHIMP; PIRH2; PRO1996; RNF199; ZCHY; ZNF363
Protein Families:	Druggable Genome, Stem cell - Pluripotency
Protein Pathways:	p53 signaling pathway, Ubiquitin mediated proteolysis



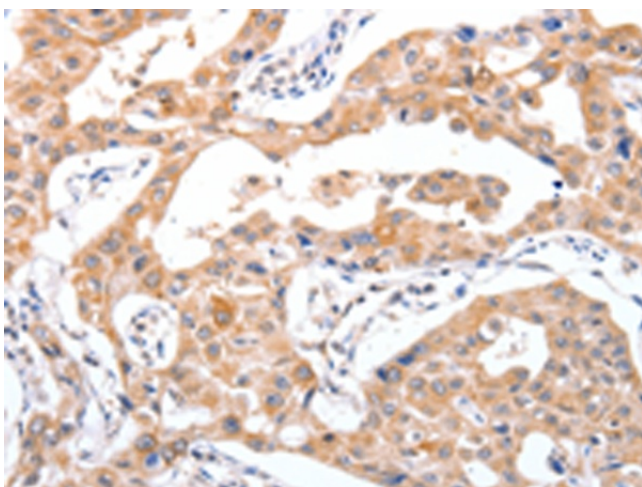
[View online »](#)

Product images:

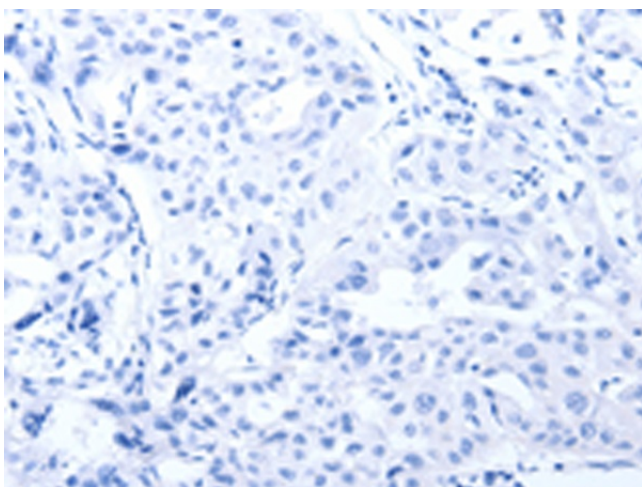
Immunohistochemistry of paraffin-embedded Human ovarian cancer tissue using TA323448 (RCHY1 Antibody) at dilution 1/30 (Original magnification: $\times 200$)



Immunohistochemistry of paraffin-embedded Human ovarian cancer tissue using TA323448 (RCHY1 Antibody) at dilution 1/30, treated with fusion protein. (Original magnification: $\times 200$)



Immunohistochemistry of paraffin-embedded Human lung cancer tissue using TA323448 (RCHY1 Antibody) at dilution 1/30 (Original magnification: $\times 200$)



Immunohistochemistry of paraffin-embedded Human lung cancer tissue using TA323448 (RCHY1 Antibody) at dilution 1/30, treated with fusion protein. (Original magnification: $\times 200$)