

## Product datasheet for **TA323444**

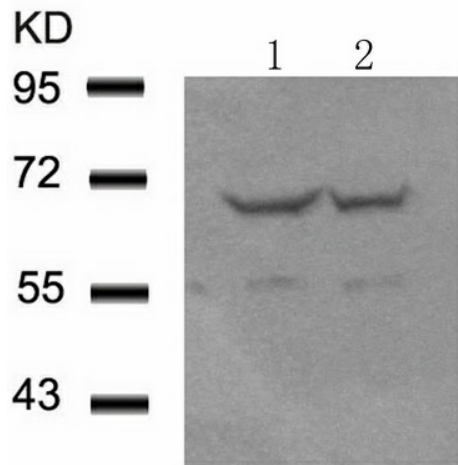
### HDAC5 Rabbit Polyclonal Antibody

#### Product data:

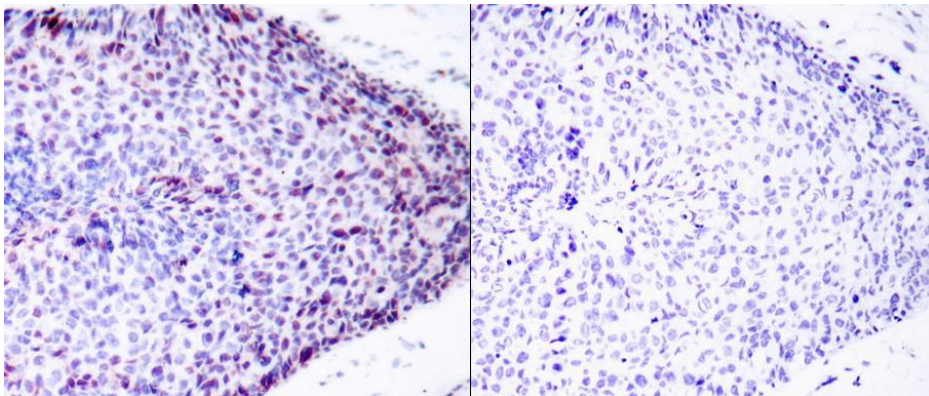
Product Type:	Primary Antibodies
Applications:	IF, IHC, WB
Recommended Dilution:	WB: 1:500-1000, IHC: 1:50-100
Reactivity:	Human, Mouse, Rat
Host:	Rabbit
Isotype:	IgG
Clonality:	Polyclonal
Immunogen:	Peptide sequence around aa.serine 60~64 or 42~46 (N-D-S-V-I) derived from Human ATF2.
Formulation:	PBS pH7.3, 0.05% NaN <sub>3</sub> , 50% glycerol
Concentration:	lot specific
Purification:	Antigen affinity purification
Conjugation:	Unconjugated
Storage:	Store at -20°C as received.
Stability:	Stable for 12 months from date of receipt.
Gene Name:	histone deacetylase 5
Database Link:	<a href="#">NP_001015053</a> <a href="#">Entrez Gene 15184 Mouse</a> <a href="#">Entrez Gene 84580 Rat</a> <a href="#">Entrez Gene 10014 Human</a> <a href="#">Q9UQL6</a>
Background:	Transcriptional activator, probably constitutive, which binds to the cAMP-responsive element (CRE) (consensus: 5'-GTGACGT[AC][AG]-3'), a sequence present in many viral and cellular promoters. Interaction with JUN redirects JUN to bind to CRES preferentially over the 12-O-tetradecanoylphorbol-13-acetate response elements (TRES) as part of an ATF2-c-Jun complex.
Synonyms:	HD5; NY-CO-9
Protein Families:	Druggable Genome, Transcription Factors



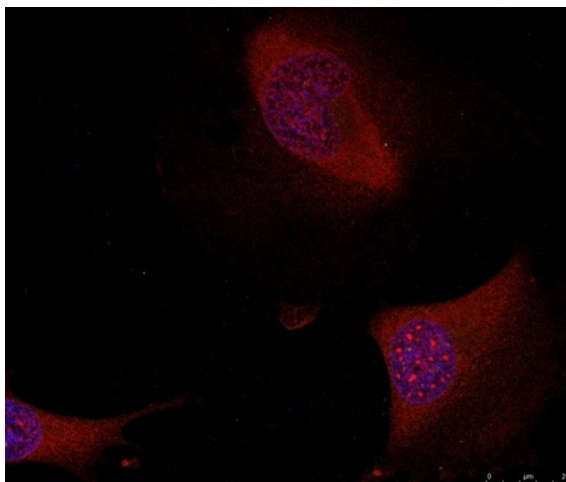
[View online »](#)

**Product images:**


Predicted band size: 65-75 kDa. Positive control: 293 and NIH/3T3 cells lysate. Recommended dilution: 1/ 500-1000. (Gel: 8%SDS-PAGE Lane 1: 293 cells lysate Lane 2: NIH/3T3 cells lysate Lysates: 30 ug per lane Primary antibody: 1/500 dilution Secondary antibody: Goat anti Rabbit IgG - H&L (HRP) at 1/10000 dilution Exposure time: 1 minute)



Predicted cell location: Nucleus. Positive control: Human breast carcinoma tissue. Recommended dilution: 1/ 50-100 The image on the left is immunohistochemistry of paraffin-embedded human breast carcinoma tissue using ATF2 (Ab-62 or 44) antibody at dilution 1/50, on the right is treated with the synthetic peptide. (Original magnification:x200)



Predicted cell location: Nucleus. Positive control: HeLa cells. Recommended dilution: 1/ 100-200.The image is immunofluorescence of methanol-fixed HeLa cells using ATF2 antibody at dilution 1/100. (Original magnification:x200)